



A Healthy Smile

Greatly Contributes to your *Quality of Life*

PRODUCT CATALOGUE

2021 | GC INDIA

Introduction	2
Commitment to Quality	3
Minimal Intervention (MI) Concept	4
Identification & Prevention	5 - 13
Tri Plaque ID Gel Dry Mouth Gel MI Varnish	
Tooth Mousse and Tooth Mousse Plus Fuji VII	
Glass Ionomers Restorative	15 - 23
Gold Label II / Fuji II Gold Label II LC / Fuji II LC	
Gold Label IX Extra / Fuji IX Extra Gold Label IX / Fuji IX Miracle Mix	
Glass Hybrid Restorative	24 - 30
Equia Forte Equia Forte HT Gold Label HYBRID	
Restoration with Capsule Application	31 - 32
Products with Capsule Applications Capsule Accessories	
Conditioning & Coating	33 - 36
Dentin Conditioner G-Coat Plus Equia Forte Coat	
Temporary Restorative Cement	37
Cavition	
Composite Restoratives	38 - 51
SOLARE X Sculpt SOLARE Flo everX Posterior everX Flow G-aenial Anterior	
Posterior G-aenial Universal Flo G-aenial Universal Injectable everStick	
Restorative Accessories	51 - 52
Shade Guide and Composite Brushes StickSTEPPER StickCARRIER	
Bonding	53 - 57
G-Premio Bond SOLARE Universal Bond G-Bond	
Luting & Lining	59 - 72
Gold Label I / Fuji I FujiCEM Fuji PLUS G-CEM LinkForce G-CEM LinkAce	
G-CEM ONE G-CEM Freegenol Elite 100 Fuji ORTHO Family	
Temporization Material	73 - 77
Tempsmart Revotek LC Tempron Unifast III	
Impression Material	78 - 84
Flexceed Exaclear Impreceed Exabite II	
Impression Making Accessories	85 - 87
COE Spacer Trays Cartridge Dispenser II VPS Tray Adhesive	
Tissue Conditioning - Follow up Maintainance	88 - 94
Reline Soft and Reline Extra Soft Soft-Liner COE-Comfort COE-Soft COE-Pak	

In our 100th anniversary (2021), GC is making continued efforts under Vision 2021 to become the number one dental company in the world through further contributing to a healthy, long-living society. However, the management must be able to cope with the external business environment, which is unpredictable. We need to be proactive and make sustainable changes and innovations. Moreover, we need to increase our organizational strength and resilience to cope with change. I firmly believe that these efforts are indispensable to GC's ability to flexibly cope with future changes in the external business environment, to realize our vision to become the world's number one dental company and to enjoy prosperity in the coming years.

Thanks to the strenuous efforts of GC Associates, GC's corporate quality (including products and services) is highly valued. Corporate quality should be built by the consistent customer-oriented efforts of all GC Associates throughout the GC Group, including R&D, manufacturers, sales, and indirect departments. If these efforts are neglected, we will face a crisis. In short, complacency could be our biggest competitor. In our efforts to improve corporate quality, we should never be satisfied with the status quo.

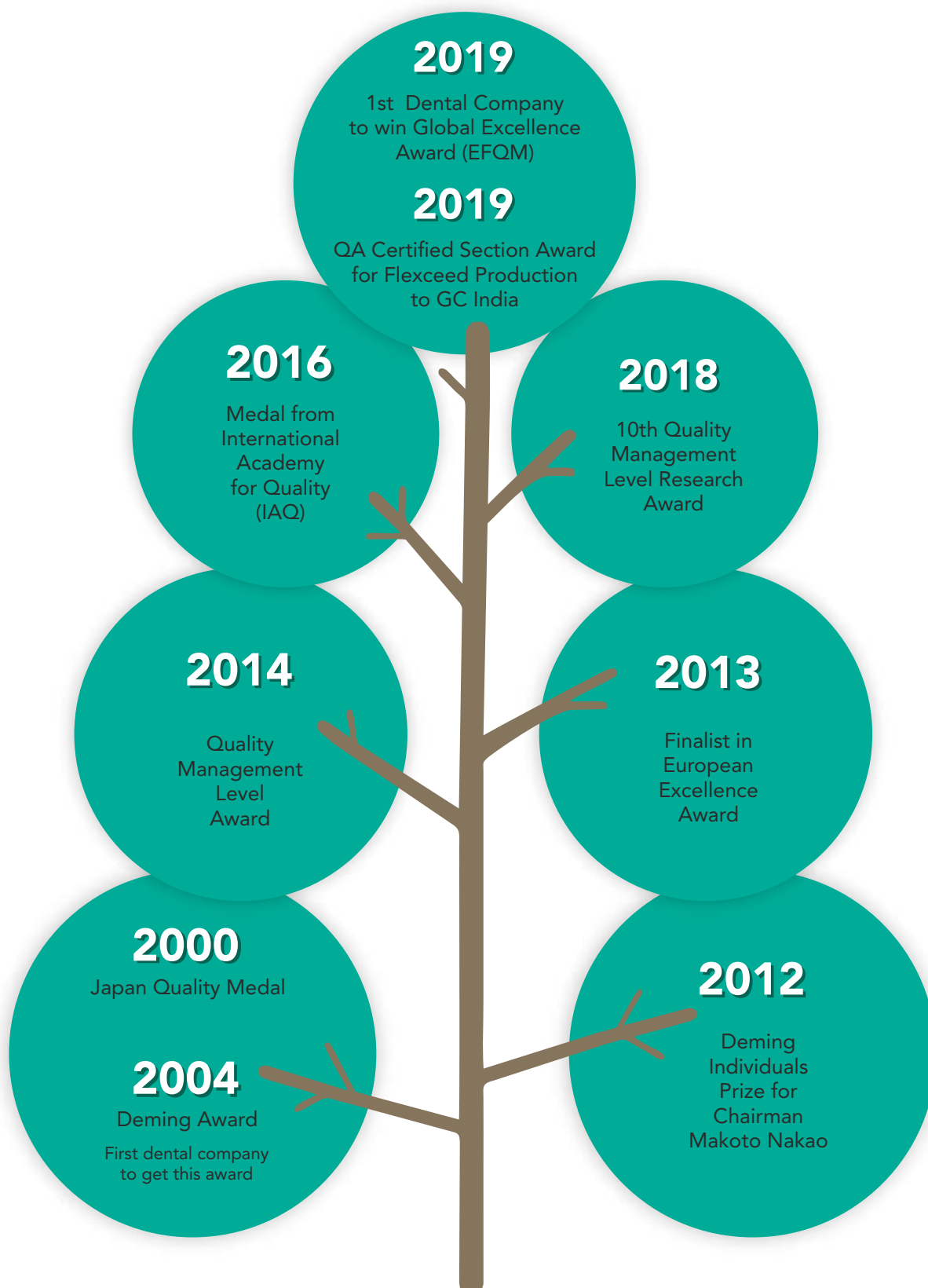
The unity of GC Associates, which we have maintained over the past 100 years, is one of our great advantages. Under our corporate philosophy of SEMUI we will make continued efforts towards the realization of Vision 2021 and take a quantum leap forward."

Dr. Kiyotaka Nakao, President GC Corporation

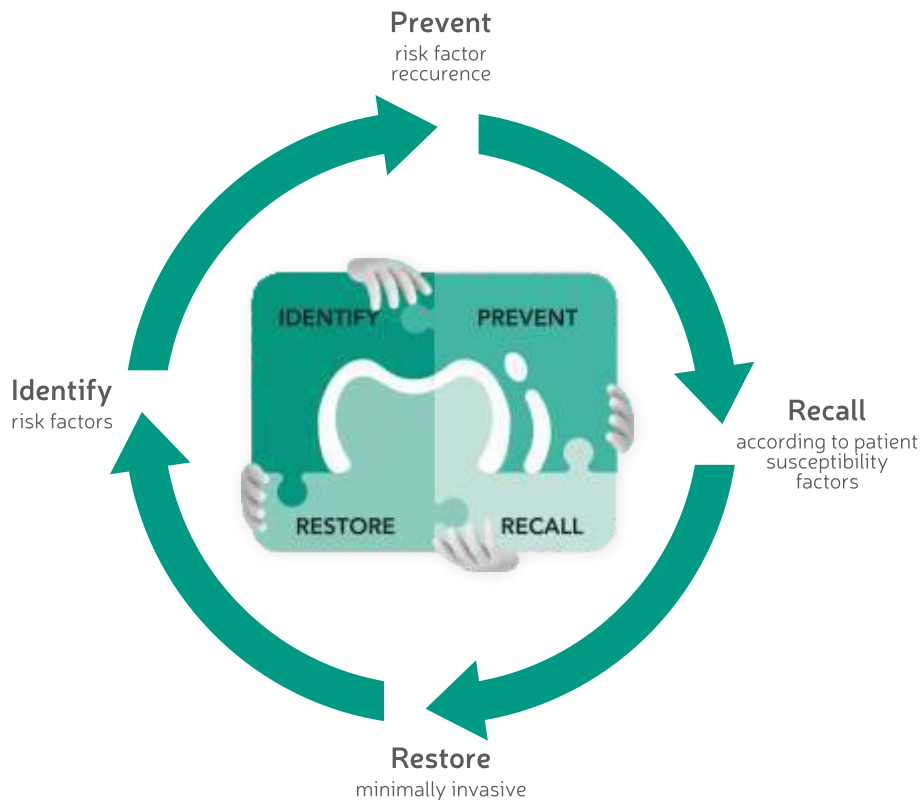


**Makoto Nakao, Chairman of GC International (Left),
Dr. Kiyotaka Nakao, President & CEO of GC Corporation (Right)**

Commitment to Quality: The Legacy Continues



MINIMAL INTERVENTION (MI) CONCEPT



As a dental company, GC is a pioneer in taking the initiative not only to advance product development but also to support the evolution of the latest concept of dentistry, namely "Minimal Intervention dentistry". GC instituted our unique MI (Minimal Intervention) concept in 2000 by rephrasing the original MI concept proposed by the FDI in 1999 and defining the three approaches of "Identify", "Prevention" and "Treatment & Control" to better fit the clinical situation. Since then, GC's MI concept has always formed the basis of our product development.



IDENTIFICATION & PREVENTION

Because seeing is believing

Tri Plaque ID Gel

Three tone plaque disclosing gel

Tri Plaque ID Gel can not only differentiate between old and new plaque in a few easy steps, this unique gel can also highlight exactly where the bacteria are most active by disclosing the acidic pH.



Indication:

Identify the plaque by observing the colour of the gel.

- Pink or red: fresh plaque
- Blue or purple: mature plaque (at least 48 hours old)
- Light blue: mature and strong acid producing plaque

Advantages:

- Allows the patient to find out where brushing is not enough.
- Mature and strong acid-producing plaque can be detected.
- It can be easily spread onto tooth and washed off without being too runny or messy.
- As an example to reduce consumption of acid drinks can impact plaque pathogenicity.
- Teamwork and plan created to change current situation.

Packages:

Tri Plaque ID Gel

Tube 40g (36mL)

Relief and comfort whenever, wherever

Dry Mouth Gel

Neutral pH gel to help relieve dry mouth

Dry Mouth Gel is a unique, sugar free product designed to help relieve dry mouths and provide long lasting comfort and a soothing effect for patients.



Indication:

Patients with the following conditions may benefit from Dry Mouth Gel:

- Mouth breathing during sleep
- Drug-induced dry mouth from prescription or 'over the counter' products
- Sjögren's syndrome
- Radiation treatment
- Long standing conditions that can impair salivary flow - e.g. diabetes mellitus, chronic hepatitis C infection and such connective tissue autoimmune diseases as systemic lupus erythematosus
- Denture wearers for tissue protection and lubrication

Advantages:

- Helps to relieve dry mouth and providing long lasting comfort.
- Neutral pH preserves oral pH in the safe range to prevent demineralisation.
- Relieves up to 4 hours.
- Also recommended to help relieve dry mouth experienced by denture wearers.

Directions for Use:

- Use GC Dry Mouth Gel as often as required when the mouth feels dry. This can be anytime during the day or at night time.
- Extrude a sufficient amount of gel from the tube on the finger or use a cotton swab to take the gel from the tube. Apply the gel to tongue, oral mucosa and or teeth.

Packages:

Dry Mouth Gel

Assorted Pack - 10 x 40g tube

Available flavours:
Orange, Raspberry, Lemon & Mint

Support, replenish and protect with the stroke of a brush

MI Varnish

Fluoride varnish treatment with bio-available calcium & phosphate for long term protection

Thanks to the patented RECALDENT™ technology, MI Varnish gives patients a head start in caries protection when fluoride, calcium and phosphate combine and form a strong protective coating.



Indication:

MI Varnish can prevent hypersensitivity in various clinical situations

- Cervical area
- Molar Incisor Hypomineralisation (MIH)
- After scaling
- Occlusal wear
- Topical fluoride application

Advantages:

- High initial fluoride release
- Minimises tooth sensitivity and strengthens enamel
- Neutral pH of 6.6 enhances enamel acid resistance and inhibits demineralization

- Penetrates dentinal tubules effectively to block them
- Sticks to applicator brushes and flows easily in hard to reach areas
- Does not clump or coagulate when exposed to saliva
- Neutral shade with natural translucency
- Available in 2 delicious patient-friendly flavours - Strawberry and Mint
- Film thickness comfortable to patient, even with multiple applications
- Is not tacky or sticky when applied

MI Varnish

Fluoride varnish treatment with bio-available calcium & phosphate for long term protection



Directions for Use:

- Dry the tooth surfaces before application of MI Varnish™
- ↓
- Apply a thin, uniform layer of MI Varnish™ using a disposable brush
- ↓
- MI Varnish™ sets when in contact with water or saliva. It should remain undisturbed on the teeth for 4 hours
- ↓
- Instruct patients to avoid hard, hot or sticky foods, tooth brushing and flossing, products containing alcohol (oral rinses, beverages etc.) during this time period

Packages:

MI Varnish

MI Varnish Refill Pack (Strawberry / Mint)

Contents:

35 units dose

50 applicator brushes

Weight: 0.55g (0.5mL)



Bio-available **calcium and phosphate** with & without fluoride

Tooth Mousse and Tooth Mousse Plus

Remineralising sugar free dental topical crème, containing bio-available calcium and phosphate

Tooth Mousse, the first product for professional use to contain this complex of CPP-ACP (RECALDENT™), the ideal delivery system for bio-available calcium and phosphate ions. Tooth Mousse Plus in addition contains a unique, patented form of fluoride.



Indication:

Natural defence against caries with Tooth Mousse for patients who:

- have a low to medium risk of caries
- suffer from white spot lesions
- experience hypersensitivity before and after teeth whitening
- have had professional procedures such as root scaling or cleaning
- For children below the age of six

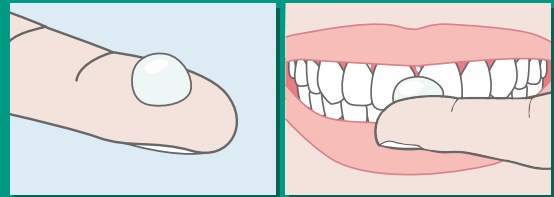
Improve how you remineralise and boost fluoridation with Tooth Mousse Plus for patients who:

- need extra protection due to medium or high susceptibility to caries
- are medically compromised
- have an acidic oral environment
- suffer from erosion and gastric reflux
- need support due to very poor plaque control

Advantages:

- When Tooth Mousse Plus and Tooth Mousse are applied to tooth surfaces, the CPP-ACP molecule binds to biofilm, plaque, bacteria, hydroxyapatite and surrounding soft tissue.
- Delivers RECALDENT Casein Phosphopeptide - Amorphous Calcium Phosphate.
- Inhibits enamel demineralization and induces remineralization.
- Reduces hypersensitivity (Molar Incisor Hypomineralization) by obturating open dentinal tubules.
- Prevents initial caries forming, thanks to the anti-cariogenic properties.
- Reverses white spot lesions.
- The delicious flavours stimulate saliva flow for an enhanced effectiveness of CPP-ACP.
- In addition the 900ppm of a unique, patented form of fluoride in Tooth Mousse Plus.
- Buffers the pH changes in plaque.
- Impairs the adhesion and growth of S. Mutans and Sobrinus.
- Remineralizes early enamel lesions and makes enamel more resistant.
- Optimizes the transport and intake of fluoride by enamel.

Directions for Use:



- After brushing your teeth, use a clean dry finger or cotton tip to apply sufficient (approximately 1 gram) crème to coat all upper and lower teeth.
- Leave on the teeth undisturbed for a minimum of 3 minutes. Then use your tongue to spread the remaining crème throughout the mouth.
- Hold in the mouth for a further 1-2 minutes. The longer GC Tooth Mouse (Plus) and saliva are maintained in the mouth, the more effective the result.
- Expectorate thoroughly and if possible avoid rinsing. Any Tooth Mousse(Plus) remaining on the tooth surface can be left to gradually dissipate.
- Do not eat or drink for 30 minutes following application.

Packages:

Tooth Mousse (40g, 35mL per tube)

Assorted pack 10 pcs, 2 of each flavour
(Melon, Strawberry, Tutti-Frutti, Mint & Vanilla)

Tooth Mousse Plus (40g, 35mL per tube)

Assorted pack 10 pcs, 2 of each flavour
(Strawberry, Mint & Vanilla)

- Individual flavour option Pack of 10 pcs available
- Refill options also available.



Simple and serious protection for teeth at need

Fuji VII® / Gold Label VII

Radiopaque glass ionomer surface protection material

GC Fuji VII is the revolutionary glass ionomer sealant and surface protectant. It is fantastic at keeping young patients' teeth cavity-free. There is no isolation or bonding agent required. The self-bonding, high fluoride releasing GC Fuji VII creates a strong, acid-resistant fused layer.



Indication:	Advantages:
<ul style="list-style-type: none"> ■ Fissure protection ■ Hypersensitivity prevention and control ■ Root surface protection ■ Intermediate endodontic sealing 	<ul style="list-style-type: none"> ■ Can be applied when saliva control is not possible, allowing treatment of newly erupted molars (partially) covered by soft tissue ■ Available in white and a translucent pink shade that allows visible control during recalls ■ Chemical adhesion to tooth structure, no need for etching and bonding ■ Easy-to-apply low viscosity ■ Self-curing conventional GIC without addition of resins ■ Pink shade can be optionally 'command set' with VLC unit for early protection against dehydration ■ Very high level of fluoride release

Fuji VII® / Gold Label VII

Radiopaque glass ionomer surface protection material

Directions for Use:

Fissure protection, root surface protection, hypersensitivity prevention and control

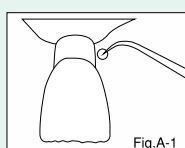


Fig.A-1

1. Preparation of the tooth surface

- After cleaning the tooth surfaces, rinse thoroughly with water.
- Dry by blotting with a cotton pellet or gently blowing with an air syringe.

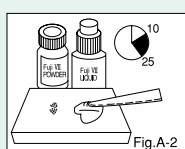


Fig.A-2

2. Powder and Liquid Dispensing

- The standard powder to liquid ratio is 1.8g/1.0g

3. Mixing

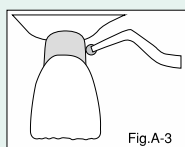


Fig.A-3

4. Placement Application

Apply with suitable placement instrument or brush to the tooth surface or over the root surface or hypersensitive area or occlusion surface and into the pits and fissures.

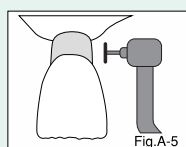
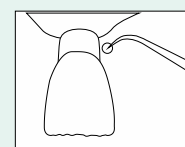


Fig.A-5

Light Curing:
20 - 40 seconds

➔ **Water Spray:**
6 minutes or 4 minutes
(if light cured) ➔



Conditioning

Apply GC Cocoa Butter or GC Fuji Varnish or GC Fuji COAT LC to the sealed area and the margins using a cotton pellet or sponge.

Packages:

Fuji VII®

Fuji VII - 1 - 1 pkg.
Powder 15g
Liquid 10g (8.0mL)
Dentine Conditioner - 6g

Capsules

Box of 50

Fuji VII CAPSULE (Pink)

Capsules

Box of 30

Gold Label VII CAPSULE (Pink)



Discover

GC's innovative solutions

for all your Restorative challenges



The unique advantages of glass ionomers



Glass ionomers are **moisture-tolerant**



Glass ionomers **chemically bond**
to tooth



Glass ionomers are **tooth-friendly**

GLASS IONOMERS

RESTORATIVES

Restorative Glass Ionomer

Gold Label II / Fuji II

Glass ionomer restorative cement

Chemically cured glass ionomer restorative cement with optimal handling for class III and V restorations.



Indication:

- Restoration of Class III and V cavities
- Erosion lesions
- Primary teeth
- Base / core build-ups

Packages:

Gold Label II / Fuji II Shades: #22, #23

Regular

Powder 15g
Liquid 10g (8.0mL)

Mini Pack

Powder 10g
Liquid 7g (5.6mL)

Fuji II Capsule

Box of 50

Advantages:

- Resistant to moisture
- Long-term stability in the mouth
- Excellent marginal seal
- Good radiopacity
- Facilitating post-operative diagnosis
- Intrinsic adhesion to dentine and enamel
- No etching, no bonding
- Hydrophilic
- No need for rubber dam

Directions for Use:

Powder / Liquid ratio (g/g)	Mixing Time (sec.)	Working Time (min. sec.)	Net Setting Time (min. sec.)
2.7 / 1.0	25 - 30	1.45 - 2.00	2.20

Gold Label II LC / Fuji II LC

World-wide leading light-cured glass ionomer cement

Clinically proven Gold Label II LC restorative brings you all the advantages of a conventional glass ionomer - plus important advances like dual curing, immediate finishing and outstanding aesthetics.



Indication:

- Class III and V restorations
- Root surface caries and cervical erosion
- Abfraction lesions
- Lesions where cavity margins are in dentin or when enamel prisms cannot be properly etched

Advantages:

- Smaller particles
- Excellent aesthetics and polishability
- Higher filler loading
- Significantly improved abrasion resistance

- Good radiopacity
- Facilitating post-operative diagnosis
- Self-adhesive to tooth structure
- No etching, no bonding
- Hydrophilic
- Very good results in areas where rubber dam is difficult to use, cavity margins are in dentin and enamel prisms can not be properly etched
- Smooth, porosity-free surface after sealing with GC G-Coat Plus
- Practical application and manipulation
- Available in 11 translucent VITA shades excellent aesthetics

Gold Label II LC / Fuji II LC

World-wide leading light-cured glass ionomer cement

Directions for Use:

Powder / Liquid ratio (g/g)	Mixing Time (sec.)	Working Time (min., sec.)	Light Curing Time (sec.)	Depth of Cure (A2) (mm)
3.2 / 1.0	20 - 25	3.45	20	1.8

Packages:

Gold Label II LC / Fuji II LC

Regular	Mini Pack	Shades: A1, A2, A3, A3.5
Powder 15g Liquid 8g (6.8mL)	Powder 5g Liquid 3g (2.4mL)	

Capsules	Box of 50 Capsules
Fuji II LC	Shades: A1, A2, A3, A3.5

Capsules	Box of 30 Capsules
Gold Label II LC	Shades: A2, A3



Gold Label IX Extra / Fuji IX Extra

Radiopaque posterior glass ionomer restorative

Latest addition to the well established family of glass ionomers that offers unsurpassed wear resistance, compressive strength, and durability.



Indication:

- Class I and small Class II restorations in non-load bearing areas
- Class I and Class II restorations in deciduous teeth
- Transitional restorations
- Base / core build-ups

Advantages:

EXTRA fast setting

- The fastest setting glass ionomer on the market, with a final finishing in only 2.5 minutes from the initial mix
- This faster final set saves valuable chair time and provides improved stability against water, an important feature in challenging oral environments

EXTRA fluoride

- Offers six times the initial fluoride protection of previous versions to help promote remineralization and maintain an excellent marginal seal
- It works faster than ever before to prevent the further development of caries

EXTRA translucency

- Formulated to provide a more aesthetic restoration
- The unique SmartGlass filler offers improved translucency for more natural shade matching with the existing tooth structure

EXTRA strong performance

- Robust physical properties maximize durability for optimum performance

Directions for Use:

Powder / Liquid ratio (g/g)	Mixing Time (sec.)	Working Time (min., sec.)	Net Setting Time (min., sec.)	Final Finishing Commencing Time (37°C, after starting mix) (min., sec.)
0.40 / 0.12	10	1.15	2.00	2.30

Gold Label IX Extra / Fuji IX Extra

Radiopaque posterior glass ionomer restorative

Packages:

Gold Label IX Extra / Fuji IX Extra		Capsules	Box of 50 capsules
Regular	Mini Pack	Fuji IX GP Extra	Shades: A2, A3, A3.5, B1, B3
Powder 15g Liquid 8g (6.4mL)	Powder 5g Liquid 3g (2.4mL)	Capsules	Box of 30 capsules
Shades: A2, A3, A3.5	Shades: A2, A3	GC Gold Label IX Extra	Shades: A2, A3



Gold Label IX

High strength radiopaque glass ionomer restorative

A high strength strontium-based glass ionomer restorative providing all the properties of genuine glass ionomers with physical properties strong enough for use in posterior teeth.



Indication:

- Class I and small Class II restorations in non-load bearing areas
- Class I and Class II restorations in deciduous teeth
- Transitional restorations
- Base / core build-ups

Advantages:

- Chemical adhesion to tooth structure allows minimal cavity preparation without the need for etching or bonding agents
- Chemical setting without shrinkage allows single step placement without layering
- Similar thermal expansion as tooth structure produce minimal stress on the marginal seal
- Strontium based glass provides good radiopacity and snap-set characteristics unanimously preferred by clinicians
- Strontium based fluoride releasing formulation contributes to internal remineralization within tooth structure as well as increasing surface strength over time
- High compressive and flexural strength, and 60% higher wear resistance than conventional glass ionomers makes Gold Label 9 strong enough for use in posterior teeth

Directions for Use:

Mixing Time (sec.)	Working Time (min.)	Finishing begins from start of mix (min.)	Powder / Liquid Ratio (g/g)
30	2.0	6	3.6 / 1.0

* Mixing conditions at 23°C. Higher temperatures will shorten working time.

Gold Label IX

High strength radiopaque glass ionomer restorative

Packages:

Gold Label IX

Regular

Powder 15g

Liquid 13.1g (10.5mL)

Mini Pack

Powder 5g

Liquid 5g (4.0mL)

Shades: A2, A3, A3.5



Miracle Mix

Silver alloy / glass ionomer restorative

Miracle Mix offers the proven formula of glass ionomer cement with 100% fine, silver alloy powder for lasting core build-ups, block-outs and repair.



Indication:

- Core build-up.
- Restoration of primary teeth.
- Cases where radiopacity is required.
- As a base or liner.
- Class I, limited Class II, temporary fillings, etc.

Advantages:

- Strong direct bond - No undercuts, fewer pins, Will not chip or flake when trimmed or cut
- Simple technique - 4 minutes set to finish
- High fluoride release - Reduces secondary decay
- Will not stain or discolor surrounding teeth
- Easily distinguishable from the tooth structure
- Shrinks and expands like the tooth structure
- "No-mess" capsules or powder-liquid

Directions for Use:

Mixing Time (sec.)	Working Time (min.,sec) at 23°C (73.4°F)
15 - 20	1.30

Higher temperature will shorten working time.

Packages:

Miracle Mix Set

Contents:

Powder 15g
Alloy 17g
Liquid 10g

Capsules

Box of 50

Miracle Mix

The added advantages of glass hybrid technology



Glass Hybrids
take you to the
next level



Glass Hybrids
are true bulk fill
materials



Glass Hybrids
widen your
options



Glass Hybrids
are long-term
restoratives

GLASS HYBRID

RESTORATIVES

The Glass hybrid innovation

Restoratives for all age group

Equia Forte® Fil

Bulk-fill glass hybrid restorative system

EQUIA Forte® is a Glass Hybrid material which represents the latest innovation in GC's glass ionomer and resin technologies with EQUIA Forte® Fil and EQUIA Forte® Coat. This unique restorative system for all age groups will impress you on all levels.



Indication:	Advantages:
<ul style="list-style-type: none"> ■ Class I restorations ■ Stress bearing Class II restorations ■ Non-stress bearing Class II restorations ■ Intermediate restorative ■ Class V and root surface restorations ■ Core build-up 	<ul style="list-style-type: none"> ■ Bulk-fill ■ Easy and quick to use ■ High flexural strength with no polymerization shrinkage ■ Non-sticky and packable ■ Outstanding resistance to wear and acid erosion ■ Moisture tolerant (no rubber dam required) ■ Coefficient of thermal expansion is the same as dentin ■ Self-adhesion (chemical bond creates a hybridized layer) ■ High fluoride release at interface and over time with recharge ■ Optimal marginal seal offers resistance to microleakage & discoloration

Equia Forte® Fil

Bulk-fill glass hybrid restorative system

Directions for Use:

Powder / Liquid Ratio (g/g)	Mixing Time (sec.)	Working Time (min, sec)	Net Setting Time (min, sec)	Final Finishing Commencing Time (37°C, after starting mix (min., sec.))*	VLC Curing Time of Equia Forte Coat (sec)
0.40 / 0.13	10	1.15	2.00	2.30	20

Packages:

Equia Forte®	Box of 50 Capsules
EQUIA Forte® Fil	Shades: A2, A3



Restorations that cross generations

Equia Forte® HT Fil

Bulk fill glass hybrid restorative system

Building on the success of EQUIA Forte®, the new EQUIA Forte® HT is a long-term bulk fill restorative system with enhanced mechanical properties, superior fluoride release, sound marginal seal and excellent handling. This makes EQUIA Forte® HT a versatile and durable restorative solution, ideal for patients of all ages, including pediatric, geriatric and high-risk caries patients.



Indication:

- Class I restorations
- Stress bearing Class II restorations
- Non-stress bearing Class II restorations
- Intermediate restorative
- Class V and root surface restorations
- Core build up



Highly versatile in use

- Amalgam alternative
- MIH (Molar Incisor Hypomineralisation) restorative solution
- Restorations for geriatric patients
- Restorations for pediatric patients
- Restoration of a posterior tooth in a high-risk caries patient



Advantages:

Strong

- State-of-the-art Glass Hybrid technology can be used even for load-bearing Class II restorations
- Wear resistant coating for long-lasting restorations
- Indications includes Class II cavities (up to 1mm distance from the cusps)

Fast & Easy to use

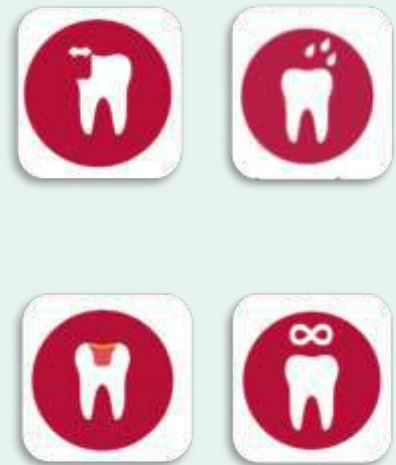
- Chemical adhesion and high wettability without bonding step
- Moisture tolerant, no need to place a rubber dam
- Real bulk-fill material with hardly any shrinkage stress, ideal for deep cavities
- Excellent handling & Prolonged working time

Advantages:

- No need for polishing thanks to the filled resin coating EQUIA Forte® Coat
- Save Time & Material with the new Coat bottle design; Optimized dispensing control and amount delivery.
- Total procedure time of only 3'25"
- Excellent biocompatibility properties

Long-term performance of Glass Hybrid Technology

- Development based on EQUIA's clinically proven formulation
- The uniqueness of Glass Hybrid Technology resides in: using an intelligent two sized particle's distribution and interaction combining the filling material with a protective multifunctional monomer coat



Directions for Use:

0'00"	0'10"	1'30	2'30"	3'00	3'05"	3'25"
Place True bulk-fill technique Convenient capsule delivery	Shape Prolonged working time Easy to contour Non-sticky	Finish Set after 2'30"	Coat Glossy surface without polishing with increased wear resistance and exceptional marginal seal	Light-cure Finished in just 3'25"		

Packages:

EQUIA Forte® HT Fil Box of 50 Capsules

Powder: 0.4g
Liquid: 0.13g (0.10mL)
per capsule) Shades: A2, A3

EQUIA Forte® Coat Bottle

1 x EQUIA Forte® Coat (4mL) bottle



Shelf life Equia Forte® HT Fil Capsule 24 months
Shelf life Equia Forte® Coat 36 months

Like **never before**

Gold Label HYBRID

Bulk-fill glass hybrid restorative system in powder liquid

Experience the next generation of hand-mixed, self-adhesive posterior restorative featuring GC Advanced Glass Hybrid technology.



Indication:

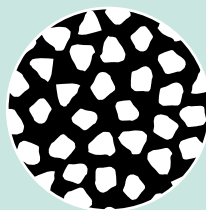
- Class I and Class II restorations in deciduous teeth
- Non-load bearing Class I and Class II
- Intermediate restorative and base material for heavy stress situations in Class I and Class II cavities using the sandwich laminate technique
- Class V and root surface restorations
- Core build-up

Advantages:

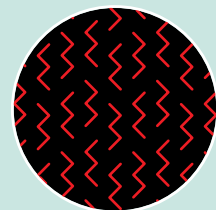
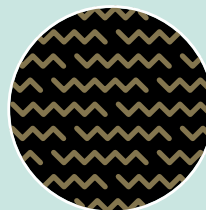
- Higher mechanical strength & durability
- Higher aesthetics
- More translucency
- More Adhesion
- Efficient Fluoride releasing
- High moisture tolerance

Advanced Glass Hybrid Technology

Two types of FAS
(Fluoro-Alumino-Silicate) glass



Two types of
polyacrylic acid



Delivering higher strength and durability, better handling, aesthetics and protection

Gold Label HYBRID

Bulk-fill glass hybrid restorative system in powder liquid

Directions for Use:



1. Occlusal caries.



2. Cavity preparation.



3. OPTIONAL STEP: Application of DENTIN CONDITIONER (20sec).



4. Gently air dry. DO NOT DESSICATE.



5. Dispense 1 scoop powder to 1 scoop liquid and mix thoroughly.



6. Place into the cavity and form the preliminary contour within 1'45" from start of mix.



7. When set, immediately apply GC Fuji VARNISH or GC COCOA BUTTER.



8. Final finishing under water spray can begin 6"00" after start of mix.

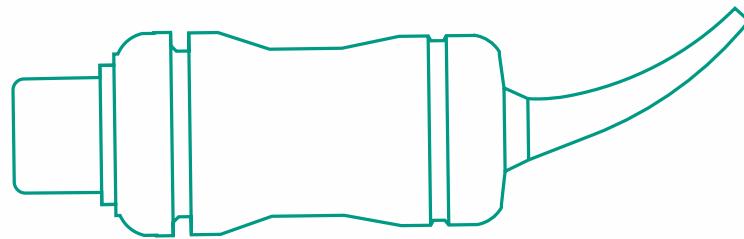
Packages:

Gold Label HYBRID

Powder 15g
Liquid 8g (6.4mL)
Mixing pad

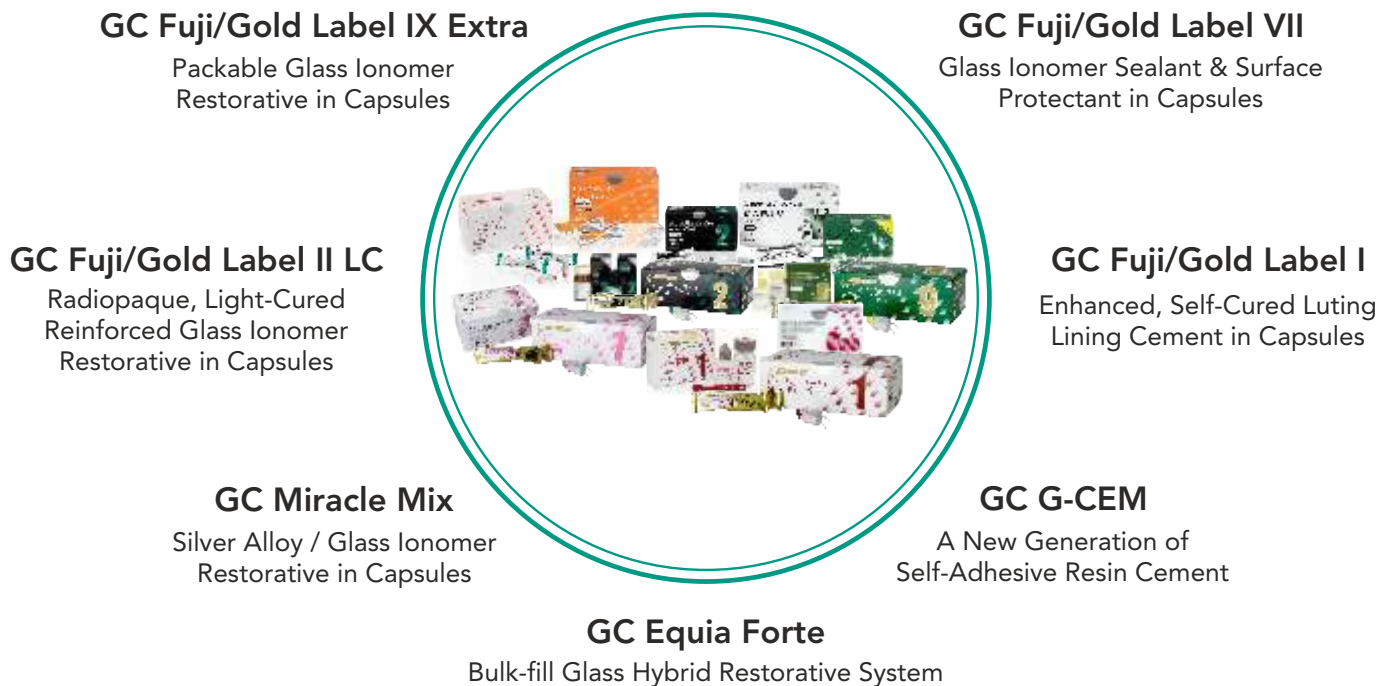
Shades: A2, A3





RESTORATION WITH CAPSULE APPLICATION

PRODUCTS WITH CAPSULE APPLICATION



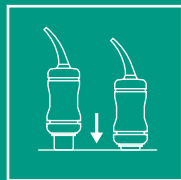
Advantages of Capsule Application

- Uniform consistency of mix - correct P/L ratio
- Working properties remain constant
- Less porosities in the mix, therefore, a stronger and longer lasting restoration
- Contamination free mix
- No hand mixing, easy application in the oral cavity

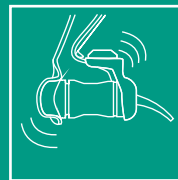
Push & Mix Technique



A. Shake or tap its side to loosen powder.



B. Make sure to depress plunger and hold it down for 2 seconds.



C. Mix for 10 seconds.



D. Two clicks to prime capsule then syringe slowly.

Capsule Accessories



GC Capsule Mixer

Digitally Controlled High Speed Triturator



GC Capsule Applier

Applier for Capsulated Products



To increase the bond & longevity



Long lasting



Enhanced bonding

CONDITIONING

& COATING

Dentin Conditioner

Dentin cleaning agent

Dentin Conditioner is a mild polyacrylic acid solution designed to remove the dentinal smear layer and to condition dentine and enamel before the application of your glass ionomer restorative.



Indication:

- Increase the bond between your glass ionomer cement and tooth structure for added longevity.

Directions for Use:

- After tooth preparation, apply DENTIN CONDITIONER to the bonding surfaces for 20 seconds using a cotton pellet or sponge
- Rinse with water
- Dry by blotting with a cotton pellet or gently blowing with an air syringe
- Apply the glass ionomer

Advantages:

- Cleans the surface effectively for improved adhesion
- Creates mechanical retention
- Enhances the marginal seal
- Blue tint for a controlled application
- 10% polyacrylic acid with application time of 20 seconds

Packages:

Dentin Conditioner

Dentin Conditioner - 6g

G-Coat Plus

Nanofilled, self-adhesive, light-cured protective coating

G-COAT PLUS is the only light-cured protective clear coating formulated with adhesive monomer and uniformly dispersed nanofillers. One thin coat protects margins, prevents staining and provides a high gloss comparable to intense polishing.



Indication:

- Glass Ionomer
- Composite Resin
- Bis-Acryl & Acrylic
- Dentin & Enamel

Advantages:

- Offers excellent colour stability
- Ensures optimum wetting, strong adhesion, enhanced wear resistance and extra protection for margins
- Provides surface smoothness and reduced risk of staining
- Prevents the initial sensitivity of GICs to water

Directions for Use:



Prepare the surfaces to be coated



Immediately apply (within 60") a single uniform layer using a micro tip applicator



Light cure for 20 seconds

Packages:

G-Coat Plus

1 x G-Coat Plus (4mL)
20 x Disposable Dispensing Dish

50 x Micro Teeth Applicator
1 x Applicator Holder

EQUIA Forte® Coat

Light-cured, self-adhesive wear resistant resin coat

EQUIA Forte Coat - a highly-filled resin coating material that brings glass ionomer technology to the next level.



Indication:

- Class I, II & V; core build-up

Advantages:

- Bulk-fill
- Easy and quick to use
- Not technique sensitive
- No polymerization shrinkage or shrinkage stress
- Non sticky and packable
- High flexural strength
- Outstanding resistance to wear and acid erosion
- Moisture tolerant (no rubber dam required)
- Coefficient of thermal expansion is the same as dentin
- Self-adhesion (chemical bond creates a hybridized layer)
- Improved strength over other glass ionomer restoratives
- High fluoride release at interface and over time with recharge
- Optimal marginal seal that offers long-term resistance to microleakage and discoloration

Directions for Use:

When applying Equia Forte® Coat on Equia Forte® Fil restorations, roughen the surface to be coated.

a) Spray preparation dust away with water. Dry by gently blowing with oil free air. b) Bottle type: Dispense a few drops of EQUIA Forte Coat into a disposable c) IMMEDIATELY apply (within 1 minute after dispensing) to the surfaces to be coated using the disposable micro-tip applicator. Make sure that a disposable Note: Surfaces to be coated should be dry. Do not desiccate. dispensing dish. Replace bottle cap immediately after use. Unit dose type: Unscrew cap of EQUIA Forte Coat Unit dose counterclockwise. Make sure to identify the top and bottom of the unit dose capsule before opening. micro-tip applicator is firmly fixed on the applicator holder. Use floss to apply to approximal surface. DO NOT AIR BLOW.

Packages:

Equia Forte® Coat

One EQUIA Forte® Coat bottle (4mL)

Cavition

Eugenol free temporary cement

CAVITON is a hydraulic temporary restorative used as a temporary filling material.

Indication:

- Filling material for standard cavities after endodontic treatments

Advantages:

- Setting initiated by water and saliva
- Excellent adaptability
- Easy to remove



Packages:

CAVITON

Cavition 30g - White, Pink

The unique strengths of composites



Composites are
highly aesthetic



Composites are
very strong



Composites are
particularly durable

COMPOSITE

RESTORATIVES

eXperience unmatched **handling, simplicity, aesthetics**

SOLARE X

Light-cured universal restorative composite

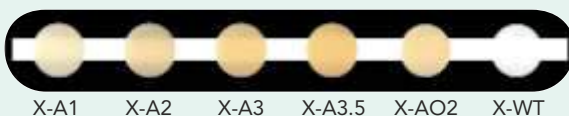
With GC SOLARE X, all composite restorations are placed easily with just one UNIVERSAL restorative aesthetically pleasing for ANTERIOR use with the physical properties for POSTERIOR use.



Indication:

- Direct Restorative for Class I, II, III, IV, V Cavities
- Direct Restorative for wedge shaped defects & root surface cavities
- Direct Restorative for Veneer & Diastema Closure

A simplified shade range allowing the majority of restorations to be completed using a single layer technique.

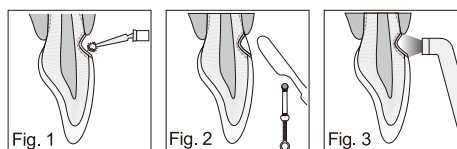


Advantages:

- Unmatchable aesthetic invisibility
- Remarkable ability to blend into the tooth
- Non-sticky handling that allows for easy manipulation
- Plenty of working time under the operator light
- Easy and quick to polish for a smooth, glossy surface
- Very low shrinkage stress
- High fracture toughness

Directions for Use:

- Shade Selection
- Cavity Preparation
- Bonding Treatment (Fig. 1)
- Placement of Solare X (Fig. 2)
- Contouring before Light Curing
- Light Curing (Fig. 3)



Packages:

SOLARE X	Syringe
Solare X - 2.7ml / 5g	Shades: A1, A2, A3, A3.5, AO2

Sculpting a Smile is easy now

Sculpt

SCULPTable nano composite for every need

Sculpt is a universal sculptable composite with advanced light scattering technology that merges GC's innovative single dispersion nano-fillers for everyday restorations of any cavity classification.



Indication:

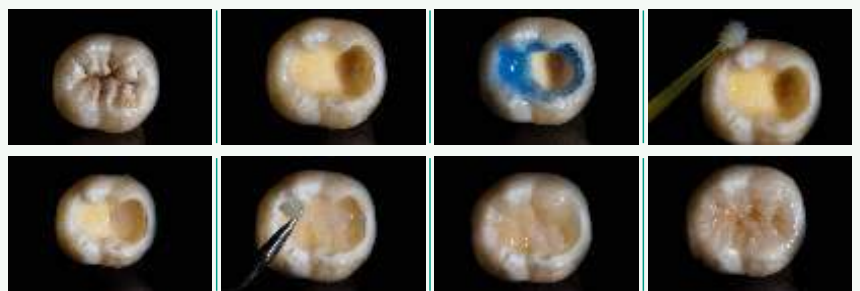
- Direct restorative for class I, II, III, IV and V cavities
- Direct restorative for wedge-shaped defects and root surface cavities
- Direct restorative for veneers and diastema closure

Advantages:

- Universal composite for all cavity classification
- 4 shades that cover all restorative needs
- Excellent gloss with finish that lasts
- High flexural strength and wear resistance.
- Self Polishing and fast finishing
- Easy Handling with more working time

Directions for Use:

- Shade Selection
- Cavity Preparation
- Bonding Treatment
- Placement of Sculpt
- Contouring before light curing
- Light curing
- Finishing & Polishing



Large Class I restorations on mandibular third molar (SOLARE Sculpt A3)

Sculpting a Smile is easy now

Sculpt

SCULPTable nano composite for every need

Packages:

Sculpt

Shades: A1, A2, A3, A3.5

Expo Pack

3 x Sculpt syringes + 1 x Flo + 1 x SOLARE Universal Bond + 1 x Microbrush

Membership Pack

5 x Sculpt syringes + 1 x Flo + 1 x SOLARE Universal Bond



The art of creating invisible & long-lasting aesthetics

G-aenial Anterior Posterior

Age specific restorative composite

G-aenial is a light-cured radiopaque MFR hybrid composite restorative with a combination of 2 types of pre-polymerized resin fillers to provide the best aesthetic results while maintaining optimal physical performance and userfriendliness.



Indication:

- **G-aenial Anterior**
- Direct restorative for Class III, IV, V cavities.
- Direct restorative for wedge-shaped defects and root surface cavities.
- Direct restorative for veneers and diastema closure.
- **G-aenial Posterior**
- Direct restorative for Class I and II cavities.

Advantages:

- Effortless handling with a smooth & non-sticky viscosity
- High aesthetic level thanks to optimal light-scattering & blending
- Versatile in use: from single shade simplicity to multi-shade complexity
- Enamel selection based on the age of the patient
- Posterior version more packable & radiopaque for easy placement & follow-up

Directions for Use:



Multi-shade layering with G-aenial Anterior

Invisible restoration with G-aenial Posterior

G-aenial Anterior Posterior

Age specific restorative composite

Clinical Observations



1. A 79-year old patient presented for treatment after injury.



2. An alginate impression of the anterior sections (upper and lower) was taken to make a wax mould for treatment planning and to provide a greater ability to handle the shapes and volumes of the various composite layers.



3. Both central maxillary incisors were prepared using diamond burs. Tooth 11 required a large bevel to increase the surface for adhesion to enamel and to obtain greater retention.



4. After etching and application of G-BOND, a palatine silicone ring was positioned (previously prepared on the wax working model) to recreate the layer of palatine enamel.



5. The interproximal areas were filled with a thin layer of enamel composite (G-aenial AE) which bonded to the previously created palatine surface.



6. To conceal the fracture line, G-aenial AO3 was placed along this line, with small indentations to transform it into an irregular line.



7. G-aenial A3 was used to recreate the rest of the dentine, which gave shape to the mamelons and covered part of the bevel.



8. An extremely thin layer of highly translucent enamel composite (G-aenial TE) was placed, leaving one section of the preparation bevel with no cover, carefully filling the space around the mamelons to recreate a natural enamel zone.



9. G-aenial AE is used to create the vestibular enamel layer.



10. After completion, matrices and wedges are removed and polishing begins using interproximal strips, tungsten carbide burs, diamond-coated rubber pads and polishing discs. A diamond paste was used for final polishing.

Dr J Tapia Guadix, Spain

Packages:

G-aenial Anterior Posterior

G-aenial Syringe (2.7mL)

Shades:

BW, A1, A2, A3, A3.5, A4, B2, B3, C3
CV, CVD, AO2, AO3, AO4, JE, AE, TE
IE, SE, CVE, XBW, B1, P-A1, P-A2(E),
P-A3(E), P-A3.5, P-JE, P-IE



Flowable Composite with Impressive Strength

SOLARE Flo

Flowable with impressive strength

An integral part of the Sculpt range of restorative materials. Because we believe that your restorations deserve the best foundation.



Indication:



Lining
or base



Filling
undercuts



Tunnel
restorations



Fissure
sealing



M.I.
restorations

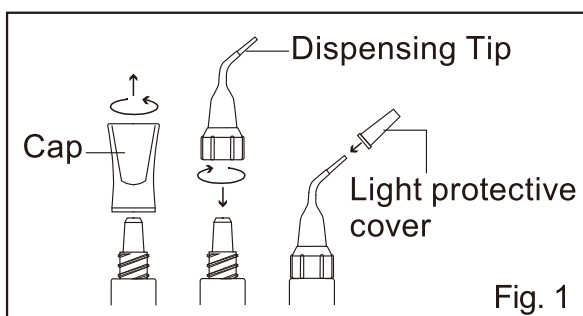


Class V
restorations

Advantages:

- High radiopacity even at low thickness
- Optimal Viscosity for Lining
- Excellent handling properties and optimal durability
- Restoration to all packable composite

Directions for Use:



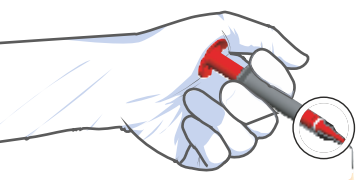
- Preparation
- Shade selection
- Cavity preparation
- Bonding Treatment
- Placement of SOLARE Flo

Packages:

SOLARE Flo

SOLARE Flo 1g / 0.56mL - Refill Pack

Shades: A2, A3



This unique ergonomic syringe design with long & thin nozzle makes it possible to reach even the deepest of cavities.

Power of Injectable Composite

G-aenial Universal Flo

High-strength injectable light-cured restorative composite

G-aenial Universal Flo is an exclusive blend of injectable viscosity for easy and convenient placement even in deep cavities, combined with outstanding physical properties for safe and durable restorations.



Indication:

For all cavity indications - and more!



Class I



Class II



Class III



Class IV



Class V

Advantages:

- High strength and balanced physical properties for durable restorations
- Excellent wear resistance
- Carefully balanced viscosity with highly thixotropic to hold its shape
- Optimal polishability and very high gloss retention over time
- Wide range of shades in three translucency levels for the highest aesthetics
- Economic & ergonomic dispensing syringe

Directions for Use:



Patient request for tooth colored restoration



Apply G-Bond



Buccal cusp is formed with shade A2



Finished restoration

Packages:

G-aenial Universal Flo

G-aenial Universal Flo 3.4g
G-aenial Universal Flo 1g

Strokes: A1, A2, A3, B1, B2, AO2, AO3, JE, AE

Inject & Impress

G-aenial Universal Injectable

Universal light-cured radiopaque injectable composite

G-aenial Universal Injectable is an injectable high-strength ultra-fine particle composite with ideal viscosity, handling, and adaptation characteristics that may be used for long-lasting aesthetic restorations.



Indication:



Advantages:

- Unsurpassed Polishability and beautiful aesthetics
- Faster placement with no waste
- 3 in 1 Technologies: Ultrafine Fillers, Full coverage silane coating & Improved resin monomer
- Exceptional strength
- Innovative syringe design delivers with ease and no slumping

Packages:

G-aenial Universal Injectable

G-aenial Universal Injectable 1.7g Shades: A2, A3

Directions for Use:

1. Initial situation
2. Fill the impression tray with EXACLEAR and take an impression of the wax-up on the model
3. After setting, remove the clear silicone from the tray
4. Drill a hole through the silicone key to create space for the composite tip
5. Isolate the neighbouring teeth, etch the enamel and apply a bonding agent
6. Place the silicone key in the mouth and inject G-aenial Universal Injectable through the hole in the key
7. Light-cure through the silicone key and then remove it
8. Remove excesses of composite with a blade
9. Final result after a few polishing steps

Discover The Power of Fibre

everX Posterior

Fibre-reinforced composite for dentin replacement

The short fibres of everX Posterior will make it a perfect sub-structure to reinforce any composite restoration in large size cavities.

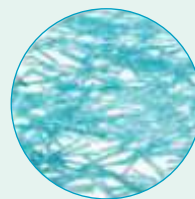


Indication:

- Cavities with 3 surfaces or more to be restored
- Cavities with missing cusps
- Deep cavities (including class I, II and endodontically treated teeth)
- Cavities after amalgam replacement (especially since amalgam placement often leads to initiation of crack and cusp fracture)
- Cavities where onlays & inlays would also be indicated

Advantages:

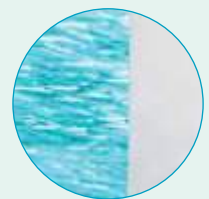
- Short fibres prevent and stop the progression of fracture in the restoration
- Fracture toughness equivalent to dentine
- Minimal horizontal shrinkage
- 4 to 5 mm increments can be cured simultaneously
- Reliable bond to overlaying composite as well as to the tooth substance



Fibres maximise the strength



Fibres stop fracture propagation



Extend indications including large size cavities

Directions for Use:

Extensive Preparation involving 3 or more surface



Prepare cavity



Apply everX Posterior in layer up to 4 mm



Cover with composite

Dr. M. Diernaes,
Denmark

Packages:

everX Posterior

everX Posterior - 15 Unitips

Restore & Reinforce

everX Flow

Short-fibre reinforced flowable composite for dentin replacement

everX Flow is short-fibre reinforced flowable composite designed to replace dentine and reinforce & strengthen restorations and prevent them from cracking.



Indication:

- Dentin replacement material for all direct composite restorations
 - large posterior cavities,
 - deep cavities and endo-treated teeth,
 - cavities with missing cusps or after amalgam removal
 - cavities where inlays and onlays would also be recommended
- Core build-up

Two shades for every clinical need



Translucent shade
Optimal for deep posterior cavities
Depth of cure: 5.5mm



Dentin shade
Optimal for more aesthetic results and for core build-up
Depth of cure: 2.0mm

Advantages:

- Optimal to strengthen large restorations thanks to the reinforcing effect of fibres.
- Excellent fracture toughness reducing the risk of catastrophic failures
- Perfect thixotropy for an easy placement & adaptation
- No slumping even in upper molars
- Quick procedure when using the Bulk shade (with a layer thickness up to 5.5mm)
- Excellent aesthetic results with the Dentin shade (in layers of 2mm)
- Indicated both for dentin replacement and for core build-up preparations

Packages:

everX Flow

everX Flow Syringe 3.7g Shades: Bulk Shade / Dentin Shade

Directions for Use:



1 Prepare the cavity.



2 In the case of a Class II cavity, first build the missing walls with a conventional composite.



3 Fill the cavity with everX Flow.



4 Cover with a conventional composite (1-2mm thickness)

Strength of Fibres like never before

everStick®

Resin reinforced fibres for multiple indications

Progress to the next level of fibre technology® The strength of everStick E-glass fibres allows clinicians to pioneer new paths in cost-effective chairside tooth replacement, splinting, root canal posts and passive orthodontic retention.



everStick® C&B
ø1.5mm (4000 fibres)

For minimally invasive fibre reinforced composite bridges

- Surface retained bridges
- Inlay and onlay bridges
- Laboratory made and temporary bridges

everStick® PERIO
ø1.2mm (2000 fibres)

For patient-friendly splinting

- Periodontal splinting
- Combined periodontal splint and surface retained bridge

everStick® ORTHO
ø0.75mm (1600 fibres)

For aesthetic retention

- For patient friendly metal free orthodontic retainers

everStick® POST
ø0.9mm, 1.2mm, 1.5mm

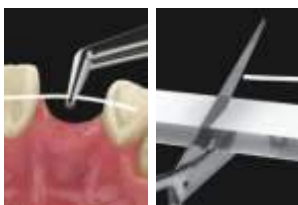
For advanced root canal post and core structures

- Individually formed root canal post

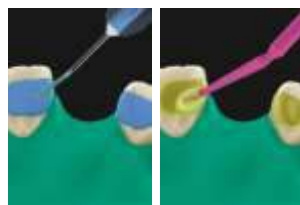
Advantages of everStick® fibers:

- Minimally invasive and reversible; leave other treatment options available
- Superior mechanical properties
- Unique patented bonding
- As strong as metal
- Elasticity close to that of dentin
- Long term clinical data with excellent success ratio

User Guide of everStick C&B



1. Check the occlusion; measure and cut the fibre



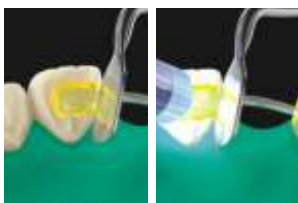
2. Clean, etch and bond



3. Apply G-aenial Universal Flo; do not light-cure!



4. Place the fibre



5. Spread the fibre on the tooth and light-cure



6. Add a transverse fibre to support the pontic



7. Cover the fibre with G-aenial Universal Flo



8. For Predictable Aesthetics Build the pontic with G-aenial Anterior check the occlusion and finish

everStick® PERIO fibre reinforcement for periodontal splinting



1. Measure and cut the fibre



2. Clean the teeth



3. Etch



4. Bond



5. Apply GUF, then Spread the fibre & light cure for 2 secs per tooth. Align the fibre to "Line of Arch" before light curing



6. Position the fibre and light-cure 5-10 sec. per tooth



7. Cover with G-ænial Universal Flo composite



8. Light-cure and finish

everStick® ORTHO fibre reinforcement for aesthetic retention



1. Measure and cut the fibre



2. Clean the teeth



3. Etch



4. Bond



5. Apply G-ænial Universal Flo



6. Place fibre and light-cure



7. Cover with G-ænial Universal Flo



8. Light-cure and finish

Step by step soft with everStick® POST



Initial situation with a trauma on the right upper central incisor



Irrigating the root canal with a saline solution and drying with paper points



Creating a customized everStick POST by condensing laterally shorter pieces onto the main post



Removing the uncured post and injecting the dual-cure self-adhesive cement G-CEM LinkAce



Placing the post back in the canal and light-curing for at least 40s



Building up with G-ænial Anterior on top of the fibre structure



Final polished restoration

everStick®

Resin reinforced fibres for multiple indications

Packages:

everStick®

everStick PERIO 2 x 12 cm refill
 everStick Post Intro Kit - 0.9, 1.2, 1.5 & SR
 everStick POST 0.9, 10 posts
 everStick POST 1.2, 10 posts
 everStick POST 1.5, 10 posts
 everStick ORTHO 2 x 12 cm refill
 everStick PERIO 1 x 8 cm refill
 everStick C&B 2 x 12 cm
 everStick C&B 1 x 8 cm



RESTORATIVE ACCESSORIES

Shade Guide & Composite Brushes

Features:

- Superfine diamond particles (1µm)
- Perfect glossy surface
- Simplified handling
- Ideal surface smoothness

Advantages:

- To aid and assist with the manipulation of composites
- Ideal for composite stains and tints

Packages:

GC Shade Guide

Customizable empty shade tabs

GC Brushes

Brush Handles, Flat & Round Brushes



StickSTEPPER

Hand instrument for use with stick and everStick fibre products

The StickSTEPPER instrument is specially designed to facilitate the use of Stick and everStick® fibre products. The shape of StickSTEPPER instrument is facilitating the positioning of the fibre bundles while also protecting the remaining fibre bundles from premature curing during the placement procedure.



Packages:

GC StickSTEPPER - 1 pc

Hand Instrument

StickCARRIER

Hand instrument for use with stick and everStick fibre products

The StickCARRIER instrument is specially designed to facilitate the use of Stick and everStick® fibre products. The StickCARRIER is very useful during the positioning of the fibre bundle and functions at the same time as a tool to press the fibre bundle in place.



Packages:

GC StickCARRIER - 1 pc

Hand Instrument

Bond with the best



Long Lasting



Bonding to
Glass Ionomer
or Composite



No post-operative
sensitivity

BONDING

Bond with no Boundaries

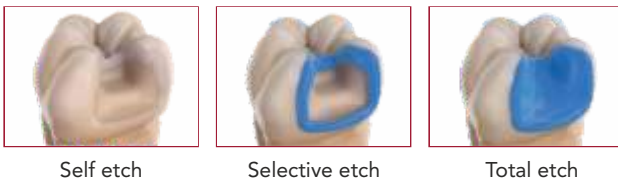
G-Premio Bond

Universal, 8th generation bonding agent

G-Premio BOND is a universal, 8th generation bonding agent that is compatible with total-etch, self-etch and selective etch techniques providing excellent versatility.



Universal in etching modes



Self etch

Selective etch

Total etch

Universal in performance



4-MET

for a reliable
adhesion to
enamel & dentin

MDP

for an excellent adhesion
to enamel & dentin,
zirconia, alumina and
non-precious metals

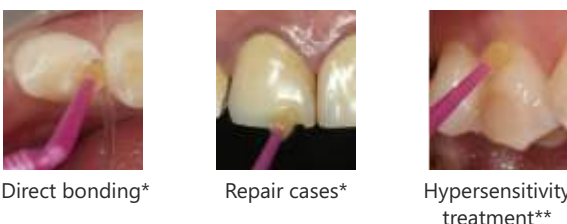
MDTP

to bond to
precious metals***

Advantages:

- Zero debondings: high & durable bond to tooth structure and indirect substrates
- Zero discolorations: extremely thin film thickness (3µm) with high filler content
- Zero post-operative sensitivity
- Zero mistakes: clear procedure and very low technique-sensitivity
- Zero hassle: excellent handling with optimal wettability and long working time
- Zero waste: short procedure & economical dispensing with 300 drops per bottle

Universal in indications



Direct bonding*

Repair cases*

Hypersensitivity
treatment**

G-Premio Bond

Universal, 8th generation bonding agent

Directions for Use:

A simple application technique with immediate adhesion and high bond strengths provides an ideal platform for clinical success in direct bonding procedures.



Select preferred technique.
Etch for 10-15 sec, rinse
& dry



Apply G-Premio BOND
and wait for 10 sec



Dry for 5 sec at MAX
air pressure



Light-cure for 10 sec

Packages:

G-Premio Bond

G-Premio Bond 5mL - Bottle Refill
G-Premio Bond 5mL - Kit



Universal Bonding Agent

SOLARE Universal Bond

One component universal light-cured adhesive

The superior bond strength and durable adhesion of SOLARE UNIVERSAL BOND is attributable to its unique formulation, with two clinically proven functional monomers, 4-MET and phosphoric acid monomer.



Indication:

One bonding agent for **all etching modes**



Self etch



Selective etch



Total etch

Advantages:

- Superior Bond Strength
- No post-operative sensitivity
- Proven clinical performance

Directions for Use:



Apply to the prepared enamel dentin surface using disposable applicator



Leave undisturbed for 10 sec after the end of the application



Dry thoroughly for 5 sec under maximum air pressure



Light curing

Less than 30sec.



Packages:

SOLARE Universal Bond

SOLARE Universal Bond 2.5mL
SOLARE Twin Pack - 2 x 2.5mL

Advanced Seventh Generation Bonding

G-Bond

One-component self-etching light-cured adhesive

G-BOND is a revolutionary 7th Generation (single component) adhesive that provides a chemical and mechanical seal to dentin.



Indication:

- Bonding of light cured composites and compomers
- Bonding of dual-cure luting and core build up composites as long as these materials are light cured

Advantages:

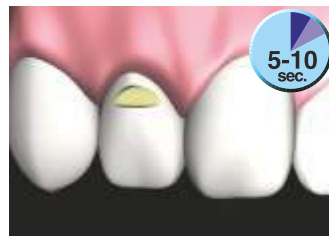
- Mild self-etching providing a very low risk of post-operative sensitivity
- Two functional monomers creating chemical adhesion to dentin and enamel
- One-component system offering a simplified handling and a 30 seconds procedure
- High moisture tolerance decreasing the technique sensitivity of the procedure
- HEMA-free formulation ensuring a durable bond

Directions for Use:

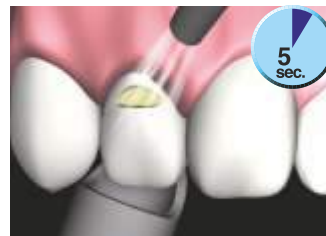
Prior to use, carefully read the instructions for use.



1 APPLICATION
Apply G-BOND™ to entire dried cavity.



2 WAITING
Leave undisturbed for 5-10 seconds.



3 DRYING
Dry thoroughly under **MAXIMUM air pressure** for 5 sec. in the presence of vacuum suction.



4 LIGHT CURING
Light cure with a visible light curing unit.

Packages:

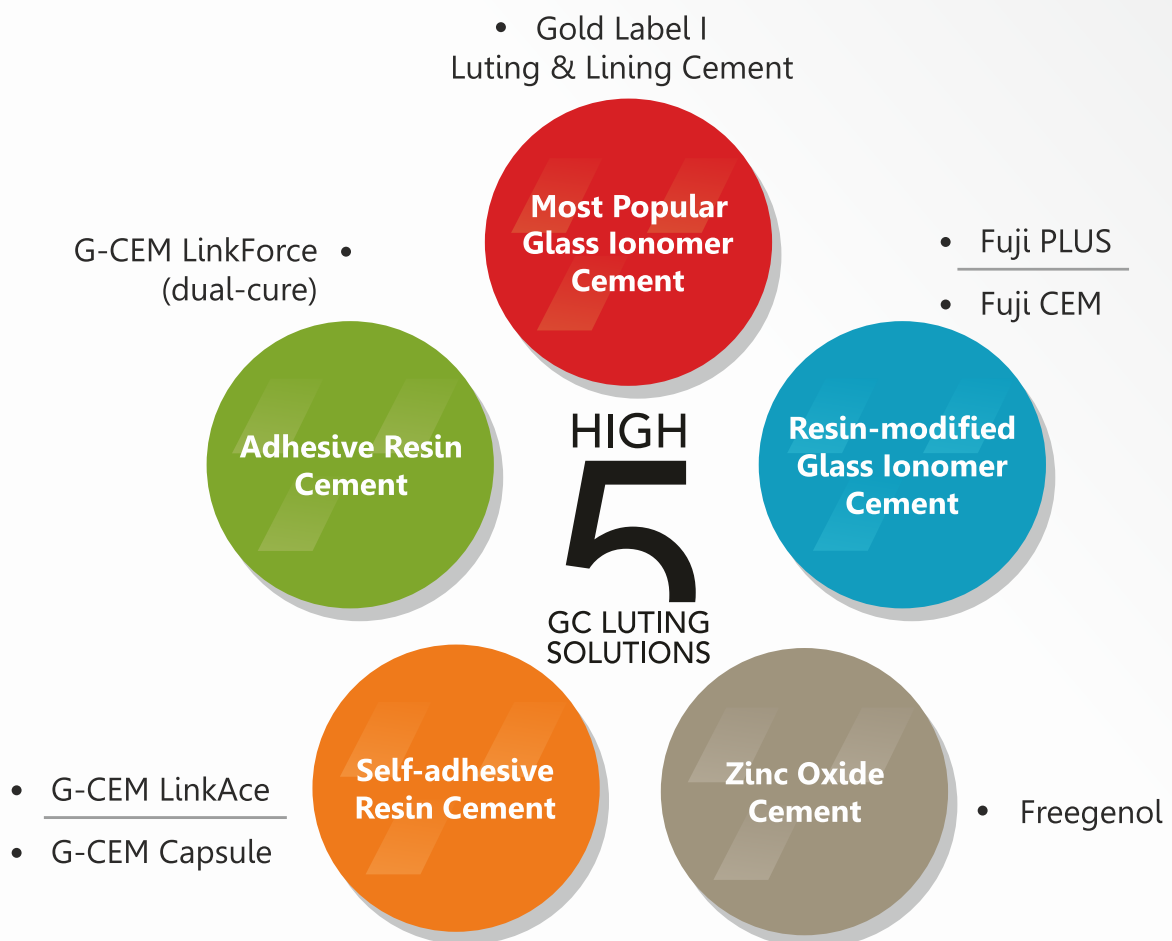
G-Bond

G-Bond - Intro Kit
G-Bond 5mL - 1 bottle pack (Refill)

Discover

GC's High-5 Solutions

for all your Luting challenges





For all Luting Challenges



Strength



High
aesthetics

LUTING &

LINING

India's no. 1 Highest Selling Luting Cement

Gold Label I / Fuji I

Conventional glass ionomer luting

Gold Label I chemically bonds to tooth structure and metal which provides excellent strength and marginal integrity for long term restorations.



Indication:

- Fuji I is ideal for the luting of all kinds of metal-based and opaque Zirconia restorations and posts.
- It is an excellent option as well for cementation on implant abutments.

Packages:

Gold Label I / Fuji I		Fuji I
Regular Luting & Lining 1-1 35g Powder 25g Liquid (20mL)	Mini Pack Powder 15g Liquid 10g (8mL)	Box of 50 capsules
		Gold Label I Box of 30 capsules

Advantages:

- Chemical adhesion to tooth structure, ensuring an excellent marginal seal
- A moisture-tolerant solution when a dry field cannot be assured
- Quick and easy without the need for etching and bonding of the tooth
- Rubbery consistency during setting for an easy removal of excesses
- Resin-free cement for patients allergic to methacrylates
- Virtually no post-operative sensitivity: a pulp-friendly solution

Directions for Use:



1. Prepared tooth. Dry, but do not dessicate.



2. Dispense the correct powder to liquid ration on the mixing pad.



3. Add all the powder to the liquid and mix rapidly for 20 secs.



4. Apply the mixed cement to both restoration and prepared tooth.



5. Seat the restoration within 30 secs. of completing the mixing.



6. Remove excess cement during get stage. Total setting time is 4 mins. 30 secs. after start of mixing.



7. Moisture proof margin by applying Fuji Coat LC or Fuji Varnish.



8. End result.

World's 1st glass ionomer luting cement in paste form

FujiCEM

Resin modified luting cement for Paste PAK systems

FujiCEM is the world's first resin reinforced glass ionomer luting cement in a paste formulation. The specially developed Paste Pak System is designed to simplify dispensing and offer greater consistency in cementation helping to ensure a perfect result every time.



Indication:

- Metal and porcelain fused to metal (PFM) crowns and bridges
- Composite inlays, onlays, crowns and bridges
- High strength all ceramic (zirconia) crowns and bridges
- All ceramic inlays. Metal, ceramic and fiber posts

Physical Properties

		GCFujiCEM	Competitor
Working time (23 °C)		3'00"	10'30"
Setting time (37 °C)		2'45"	5'40"
Consistency (mm)		28	30
Film thickness (µm)		3	12
Compressive Strength (MPa)(24 hrs.)		122	78
Flexural Strength (MPa)(24 hrs.)		34	32
Tensile Bond Strength (1 day Mpa)	Bovine Enamel	8	7
	Bovine Dentin	7	3

Advantages:

- Adhesive and compressive strength guaranteed
- Maximum release of fluoride
- Clinically insoluble when wet
- No post op. sensitivity
- Always the correct ratio and minimal cement wastage
- Easy mixing in only 10 sec with no air bubbles
- Biocompatible
- Excellent radiopacity

Clinical Technique:



Prepare Tooth



Wash and gently dry



Dispense material



Mix thoroughly for 10 secs.



Application



Excess removal

Packages:

FujiCEM

FujiCEM - Refill Pack, 13.3g - Cartridge
Plastic Dispenser, Metal Dispenser

When you are looking for confidence in Luting

Fuji PLUS

Resin modified glass ionomer luting cement

Fuji PLUS is a resin modified glass ionomer luting cement that has consistently delivered stress-free cementation for routine crown and bridge restorations.



Indication:

- Metal-based, zirconia, alumina and resin restorations
- Feldspathic and leucite-reinforced inlays
- Lithium disilicate restorations, especially when perfect isolation can't be assured
- Metal, ceramic, fibre post and cast post and cores

Advantages:

- Chemical adhesion to tooth structure, ensuring an excellent marginal seal
- A moisture-tolerant solution when a dry field cannot be assured
- Quick and easy without a need for complicated bonding procedures
- Rubbery consistency for easy removal of excess
- Pulp-friendly with virtually no post-operative sensitivity
- Proven and predictable performance for most routine cases

Packages:

GC Fuji PLUS

Fuji Plus 1-1 Pkg with Conditioner

Content:

- Powder 15g
- Liquid 8g
- Conditioner 7g

Fuji Plus Capsules

Box of 50

Directions for Use:

4 easy steps for a reliable bond



1. Clean the prepared teeth carefully. For increased retention, apply Fuji PLUS conditioner for 20 seconds. Rinse and gently dry.



2. Mix Fuji PLUS capsule for 10 seconds. Coat the internal surface of the restoration with 1mm of cement and seat within 30 seconds.



3. Remove excess cement when the gel stage begins to form (approx. 1 minute after seating).



4. Maintain isolation until the final set is verified (approx. 4 minutes).

Dr L. Viard, France

Made to fit **all your adhesive Challenges**

G-CEM LinkForce™

Dual-cure adhesive luting cement

G-CEM LinkForce™ provides durable retention and long term margin aesthetics through enhanced dual-cure polymerisation systems and incorporation of high-density, single-dispersion glass filler technology.



Indication:

G-CEM LinkForce in all clinical situations, for each indication and every kind of substrate:

- Metal, ceramic and fibre posts
- All ceramic and composite veneers
- Crowns and bridges on implant abutments

Advantages:

- Seating and ensuring a perfect adaptation
- Consistent handling and clean up
- Efficient polymerisation in self-cure and light-cure modes
- High polishability and wear resistance
- The right shade for each use
- Consistency in aesthetics

One system, three base elements:

To create strong adhesion in all situations



Packages:

G-CEM LinkForce

G-CEM LinkForce Starter Kit Shades: A2, Translucent

Contents:

G-CEM LinkForce 8.7g (5mL)
G-Premio Bond 5mL
G-Multi PRIMER 5mL
20 x Automix Tips

G-CEM LinkForce TECHNIQUE GUIDE

CEMENTATION TECHNIQUE FOR VENEERS



► TRIAL FIT

Remove the temporary restoration and clean thoroughly.

1



Check the fit & occlusion. As necessary, use G-CEM LinkForce Try-In Paste.

2



Remove the restoration and rinse the paste with water.

3



► PREPARATION OF THE RESTORATION

Prepare the restoration according to the manufacturer's instructions.

► Glass ceramics

Etch with hydrofluoric acid.

1



Rinse and dry.

2



► Hybrid ceramics & Composite

Sandblast*
*For CERASMART, alternatively apply hydrofluoric acid.

1



Blow clean with air syringe. Rinse and dry.

2



Apply G-Multi PRIMER.



Dry with an air syringe.



► PREPARATION OF TOOTH SURFACE



Rinse and dry the prepared tooth.

5



Select either Selective Etch or Total Etch technique. Rinse and dry.

6



Apply G-Premio BOND. Wait 10 seconds.



7



Dry with a MAXIMUM AIR PRESSURE for 5 seconds.

8



Light cure for 10 seconds (Halogen/LED 700mW/cm²).

9

► CEMENTATION



Apply cement directly to the bonding surface of the veneer and/or tooth surface.

10



Immediately seat onto prepared tooth. Maintain moderate pressure.

11



Remove excess. Excess can be tack cured for 1-2 seconds.

12



Light cure each surfaces/margins for 20 seconds (Halogen/LED 700mW/cm²).

13



Finish and polish the margins.

14

Innovation, Simplicity, Versatility & Reliability

G-CEM LinkAce

A new generation of self-adhesive resin luting cement (automix syringe)

G-CEM LinkAce is a dual-cure self-adhesive universal resin luting cement delivered in double barrel automix syringe,



Indication:

- All-ceramic, zirconia, alumina, resin and metal-based inlays, onlays, crowns and bridges
- Metal, ceramic, fibre posts and cast post and cores

Advantages:

- Efficient self-cure mode guarantees optimal polymerisation even under opaque or thick restorations
- No pre-treatment of tooth or application of primers for metal or zirconia
- Thin film thickness (3µm) ensures an excellent fit of the prosthesis
- Excellent colour stability for long-lasting aesthetic results
- Easy-to-use, can be stored at room temperature since refrigeration is not needed

G-CEM LinkAce

A new generation of self-adhesive resin luting cement (automix syringe)

Directions for Use:



Prior to use, carefully read the instructions for use.

CEMENTATION TECHNIQUE for inlays, onlays, crowns, bridges



Clean, rinse and thoroughly dry the prepared tooth.



Prepare the restoration according to the manufacturer's instructions.



Extrude material into restoration. Seat immediately and maintain moderate pressure.



Maintain moderate pressure



Tack cure each surface with a visible light curing unit.



Remove excess cement while maintaining moderate pressure.



Light cure each margin for 20 sec. Alternatively, let the material self-cure for 4 min.



Finish and polish margins if necessary.

Packages:

G-CEM LinkAce Syringes

2 x G-CEM LinkAce Syringes
4.6g (2.7mL)

Shades: A2, Translucent



SIMPLY the ONE

G-CEM ONE

Self adhesive resin cement

GC G-CEM ONE is the universal self-adhesive luting solution for all cementation procedure

**Indication:**

- Cementation of all types of all ceramic, resin and metal-based inlays, onlays, crowns and bridges.
- Cementation of metal, ceramic, fiber posts and cast post and cores.
- Cementation of all ceramic and composite veneers.
- Final cementation of crowns and bridges on implant abutments.

Advantages:

- **O: Outstanding Universal performance**
 - Strong MDP adhesion to surfaces and substrates.
 - Zirconia, Glass ceramics*, Hybrid ceramics*, Metal
 - Enamel, Dentin, GIC & Composite cores

- Excellent in Aesthetics with the shades available
- Outstanding self-curing capacity

■ **N: No worry cementation**

- Provides high adhesiveness in cases where moisture control is difficult
- Touch cure effect (accelerate polymerization)
- Creamy consistency and easy to mix
- Simple excess removal

■ **E: Enhanced adhesion (with AEP)**

- High initial bond strength, which increases over time
- Long-term stability (both to Enamel & Dentine)

What is AEP?**For all abutment tooth and cavity**

- MDP: bond to tooth structure, non-precious metal
- 4-MET: bond to tooth structure
- MDTP: bond to precious metal
- Accelerator ⇒ Touch Cure with G-CEM ONE
- Solvent
- No light curing, simply drying.
- To be used when higher bond strength is needed

Wait 10 seconds

Dry 5 seconds in strong air

Directions for Use:

CEMENTATION TECHNIQUE for all inlays, onlays, crowns, bridges, and veneers

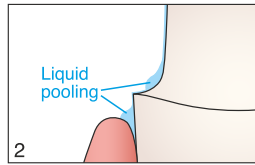


1. Clean, rinse and thoroughly dry the prepared tooth.

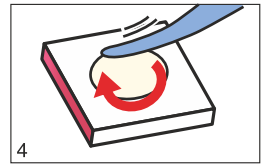


2. **When more adhesion is needed**, apply G-CEM ONE ADHESIVE ENHANCING PRIMER, wait 10 seconds, and dry with MAXIMUM air pressure for 5 seconds to prevent liquid pooling in the gingival sulcus.

Optional



3. Prepare the restoration according to the manufacturer's instructions.



4. Dispense the paste and mix the paste for 10 seconds.



5. Coat the internal surface of the restoration. Working time is 2 minutes 30 seconds.



6. Seat immediately and maintain moderate pressure.



7A. Tack cure by waving the light guide of a curing light over the excess cement for 1 second until it reaches a solid rubbery consistency.



7B. Keep moderate pressure until it reaches a solid rubbery consistency.



8. Remove excess cement while maintaining moderate pressure.



9A. While maintaining moderate pressure, light cure all surfaces / margins.



9B. Let the material set for 4 minutes in case restoration does not let the light to pass through.

Irradiation time	
High power LED (more than 1200 mW/cm ²)	10 seconds
Halogen / LED (700-1200 mW/cm ²)	20 seconds



Consult Instructions for Use

CEMENTATION TECHNIQUE for metal, ceramic, fiber posts, and cast post and cores



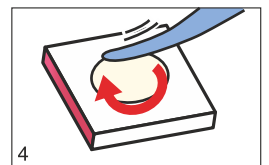
1. Clean and rinse the post space, then thoroughly dry using paper points. Do not use H₂O₂ and/or EDTA to chemically clean the post space.



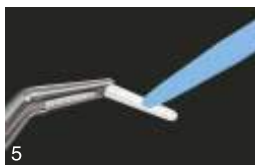
2. **When more adhesion is needed**, Apply G-CEM ONE ADHESIVE ENHANCING PRIMER, wait 10 seconds, and dry with MAXIMUM air pressure until the primer solution does not come out of the root canal entrance anymore. Remove excess primer solution with paper points.



3. Prepare the post/core according to the manufacturer's instructions.



4. Dispense the paste and mix the paste for 10 seconds.



5. Apply the cement on adhesive surface of the post/core.



6. Seat the post and continue to maintain moderate pressure making sure the post remains in place and remove excess cement.



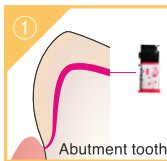
7. While maintaining moderate pressure, light cure all surfaces / margins.



8. Let the material set for 4 minutes.

Irradiation time	
High power LED (more than 1200 mW/cm ²)	10 seconds
Halogen / LED (700-1200 mW/cm ²)	20 seconds

When to use G-CEM ONE™ ADHESIVE ENHANCING PRIMER?



Adherend	Retentive preparation
Metal, Zirconia, Ceramics, Fiber Post	✗
Hybrid ceramics Composite	✓



Adherend	Non-retentive preparation
Metal, Zirconia, Ceramics, Fiber Post	✓
Hybrid ceramics Composite	✓

When to use G-Multi PRIMER?



Adherend	G-Multi PRIMER
Metal Zirconia	✗
Ceramics Fiber Post Hybrid ceramics Composite	✓

Packages:

Items	Shades
Starter Kit - G-CEM ONE Paste Pak (7.6 ml) + Adhesive Enhanced Primer (AEP) 2 ml + Mixing Pad	A2, Trans
G-CEM ONE Paste Pak refill (1 x cartridge 7.6 ml)	A2, Trans
Adhesive Enhanced Primer refill (1 x 5 ml)	

The reliable Solution

G-CEM

A new generation of self-adhesive resin cement (capsules)

GC G-CEM is a self-adhesive, resin cement featuring an advanced formulation that offers unparalleled self-adhesive properties that seal and protect the tooth.



Indication:

- All-ceramic, zirconia, alumina, resin and metal-based inlays, onlays, crowns and bridges
- Metal, ceramic, fibre posts and cast post and cores

- No need for bonding procedures on the tooth structure
- Direct delivery into the root canal with special elongation tip
- Long-term stability and low linear expansion

Advantages:

- Excellent bonding to restorative materials. Chemical bond to Zirconia without the need for primer application
- High bond-strength to tooth in both self-cure and light-cure modes

Packages:

G-CEM Capsules

Box of 50

G-CEM Capsule
0.17mL

Shades: A2, Translucent

Directions for Use:

G-CEM's™ fast, easy application process



1 To activate, tap the capsule and push the plunger in.



2 Place capsule in a GC Applier and click once.



3 Triturate for 10 seconds.



4 Place capsule on the GC Applier and dispense into crown.



5 Seat crown and light cure.



6 Easily remove excess material.

Comfortable, Reliable & Retrievable

FREEGENOL

Temporary luting cement

GC FREEGENOL is a patented, non-eugenol temporary luting cement. It is completely compatible and safe to use with acrylic resin materials, as well as plastic provisional materials



Indication:

- Temporary cementation of indirect restorations. The setting time can be adjusted to your needs:
- more base, faster set
- less base, slower set

Advantages:

- Eugenol-free, no negative effect on polymerisation of resin containing materials
- All-purpose temporary cement
- Adjustable consistency and setting time
- Easy to remove from crowns and cores
- Special cleaner included

Directions for Use:

1. Squeeze equal lengths of Base and Accelerator pastes onto the mixing pad.
2. Mix thoroughly for 20-30 seconds.
3. Insert paste into (temporary) crown or bridge and seat onto the prepared dry tooth.
4. Allow to set (3 minutes from start of mixing) and trim excess.



Easy dispensing



Easy removal of excess

Packages:

FREEGENOL

Freegenol 1-1 Pkg

Contents: Accelerator 20g, Base 55g
Cleaner and Mixing Pad

Elite 100

Zinc phosphate cement

Elite 100 is unbeatable in terms of its physical properties such as strength, film thickness and low solubility.



Advantages:

- High Film Thickness Low solubility
- Cementation of crowns, bridges and inlays

Directions for Use:

Powder to Liquid Ratio (g/mL)	Mixing Time (sec.)	Working Time (min)	Net Setting Time (min, sec)
1.45 / 0.5	60 - 90	3 - 4	7.10

Packages:

Elite 100

Elite 100 - 1-1
Powder 35g | Liquid 30g

EasyON - EasyOFF Orthodontic luting made easy by GC

Fuji ORTHO Family

GC Fuji ORTHO resin modified glass ionomers offer superior result thanks to its simple placement procedure, fluoride protection and trouble-free removal of brackets and bands on completion of treatment.



Fuji ORTHO LC
Powder/Liquid



Fuji ORTHO Band
Paste Pak

Indication:

- Bonding of metal and ceramic brackets and attachments
- Bonding of ceramic brackets
- Bonding of acrylic appliances e.g. Rapid Palatal Expander (RPE)
- Band cementation when extra band retention is desired

Advantages:

- Easy application and controlled setting by light-curing
- Excellent adhesion, even in a moist environment
- Superior Protection due to fluoride which reduces the risk of white spots occurring during orthodontic treatment.
- Easy removal of orthodontic appliances, avoiding enamel fractures
- No discolouration

Directions for Use:

Step by step



Place the coated bracket on the tooth but do not desiccate the tooth surface



Tack cure the bracket for 5 seconds and remove the excess with a scaler.



Finally light cure the material 20 seconds for each aspect.

Dr. A. Komori, Japan

Immediately after debonding brackets with GC Fuji ORTHO LC



Sustained fluoride release helps protect enamel

Packages:

Fuji ORTHO Family

Fuji Ortho LC Intro Pack 1-1
Fuji Ortho Band Paste Pak 2 x 13.3g Cartridge

Essential for the practice of dentistry



Temporary
filling



Aesthetically
beautiful



Less time &
easy handling

TEMPORIZATION

MATERIAL

A smooth ride to your final restoration

Tempsmart

Dual-cured, Bis-acrylic Composite Temporary Crown And Bridge Material

TEMPSMART™ is an innovative, dual-cured, bis-acrylic composite temporary crown and bridge material using micro-filled resin (MFR) and nano-filler technologies.



Indication:					
<ul style="list-style-type: none">■ Fabrication of temporary crowns, bridges, inlays, onlays and veneers■ Fabrication of long-term temporary restorations	<ul style="list-style-type: none">■ High flexural strength facilitates multi-unit temporary restorations■ Quick working and setting times for the shortest chairside time■ Low plasticizer/thin oxygen inhibition layer allows for better polymerization				
Advantages:					
<ul style="list-style-type: none">■ First in class fracture toughness for clinical longevity■ Beautiful aesthetics as well as high gloss retention	Packages: <table><tr><th colspan="2">Tempsmart</th></tr><tr><td>TEMPSMART 48ml Cartridge</td><td>Shades: A2</td></tr></table>	Tempsmart		TEMPSMART 48ml Cartridge	Shades: A2
Tempsmart					
TEMPSMART 48ml Cartridge	Shades: A2				

Directions for Use: Direct Chairside Method



1. Take a putty impression before preparation of the abutment teeth.



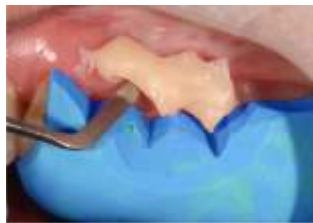
2. Preparation of abutment teeth. Apply a separating medium.



3. After bleeding the cartridge, inject TEMPSMART™ into the impression.



4. Seat the impression within 45 secs. of start of mix.



5. Remove impression 2 mins. - 2 mins. 30 secs. after start of mix. Remove any residual material at this time.



6. After light cure of 5 secs. trim the excess material



7. Finish with silicon points and polish using a goat's hair wheel. Alternatively, apply GC OPTIGLAZE colour.



8. Cement temporary using FREEGENOL temporary cement.

Dr. Chee Chang

Because **successful treatments** start with **professional provisional care**

Revotek LC

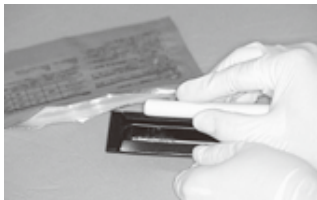
Light-Cured, Composite Resin for Temporary Restorations

GC REVOTEK LC is a light-cured, single-component, sculptable composite resin for temporary inlays, onlays, crowns, veneers and bridges.

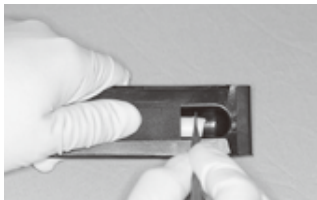


Indication:	
<ul style="list-style-type: none">■ Fabrication of temporary crowns, bridges, inlays and onlays until a permanent treatment is carried out	
Advantages:	
<ul style="list-style-type: none">■ Direct modelling in the mouth without mixing or pre-impressions■ For 60 average size inlays or 30 average size crowns■ Working and setting times are determined by the operator	<ul style="list-style-type: none">■ Easy removal from the mouth■ Highly wear resistant with negligible risk of fractures■ Composite material with absence of exothermic heat, odour or chemical irritation
Packages:	
Revotek LC	Contents:
Revotek LC Intro Set	1 x Putty Stick 16g 1 x Light Proof Storage Case 1 x GC Spatula No. 2

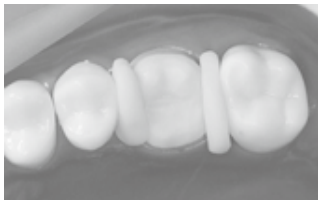
Directions for Use:



1. Transfer of putty stick to the storage case



2. Dispensing material



3. Preparations for pressing material onto the abutment



4. Pressing material onto the abutment



5. Shaping material



6. Light curing



7. Correction of contour, finishing and polishing



8. Completion

Tempron

Self Curing Acrylic

Manufacturing of temporary restorations on a model or in the mouth.



Indication:

- For the preparation of temporary crowns, bridges or dentures

Direction for use:

1. PREPARATION

- Fill defects in the tooth with GC CAVITON or equivalent temporary filling material.
- Take an impression
- Prepare the tooth to be crowned.
- Cut V notches in the impression from gingival to buccal and lingual sides to allow escape of excess resin.

2. MIXING

- The standard powder/liquid ratio is 1.0 g/0.5 mL
- Mix for 20-30 seconds.

3. APPLICATION

- Pour the creamy paste into the prepared impression, and seat tightly in the mouth.

Advantages:

- Rapid cross linking
- Smooth surfaces without porosities
- Suitable for making repairs
- Comfortable working time

- After 3 minutes in the mouth remove the impression, leaving the dough like resin on the tooth.
- Remove the resin crown before it is fully set and dip in and out of hot water ($\pm 50^{\circ}\text{C}$) several times in order to prevent shrinkage.
- Trim any excess using a bur and then polish.
- Cement the temporary crown in position using GC FREEGENOL or other appropriate temporary cement.

Packages:

Tempron

Powder 100g
Liquid 100g

Tempron - 1:1 Pack

UNIFAST III

Self-curing acrylic resin for temporary inlays, crowns, bridges & repairs

UNIFAST III introduces the SURF Technology (Surface Uniformity Revolutionary Fixation Technology), a revolutionary polymer processing technology where polymer particles are coated with pigment and guarantee bubble-free, long-lasting and even-coloured mixtures.



Indication:

- Temporary crowns, bridges and inlays
- Implant bridges and closing of implant screw holes
- Dentures with attachments or repairs
- Gingiva reproduction

Advantages:

- Superior handling for brush-on & pouring technique
- Perfect balanced composition for long term temporaries
- Shade range to meet the highest demands
- Time saving coating agent OPTIGLAZE color

Directions for use:

Mixing & pouring

- Extremely easy to mix with liquid, Unifast III powders create non-sticky mixtures.
- A very comfortable working consistency and fast setting time also drastically improve handling



Brush on

- Unifast III is suitable for fast and easy, basic, single shade temporaries or multilayer aesthetic long term temporaries.
- Picking up just the right amount of powder is simple – just dip the brush into the liquid. Thanks to the optimal thixotropic property, you can perform step-by-step applications and shape temporary restorations however you want. You can also control flowability by timing the application appropriately.



ZTM Bernd van der Heyd, Nürnberg Germany

Packages:

Unifast III

2-1 Pkg
Powder 35g Liquid 100g (10mL)

Shades: A2, A3



For most precise reproduction



Precision



Reproducibility

IMPRESSION

MATERIAL

Exceeds your Expectation

Flexceed

Vinyl polysiloxane dental impression material

GC Flexceed is a vinyl polysiloxane dental impression materials used for making accurate dental impressions with excellent reproducibility.



Indication:

- Impressions for fabrication of crowns, bridges, inlays, onlays and veneers

Advantages:

- Lowest Contact Angle- The Initial Contact Angle of FLEXCEED LB, is the LOWEST among all VPS material when the mixture contact water.
- Accurate Reproduction of details-GC Flexceed accurately replicates the highest

Advantages:

- level of detail required for crown and bridge restorations.
- Superior Tear Strength-The Tear Strength of FLEXCEED is the highest among all VPS Impression materials
- Flow of Flexceed-The FLOW of FLEXCEED is better than other VPS Impression materials Measured by "Modified Shark Fin Test" (16.7 mm)

Directions for Use:

Single-step Putty Wash Impression procedure



Take equal quantity of FLEXCEED Base & Catalyst with the prescribed scoop.



Knead the FLEXCEED Base & Catalyst slowly - only with the vinyl gloved hand. Stop kneading once the uniform blue colour is achieved.



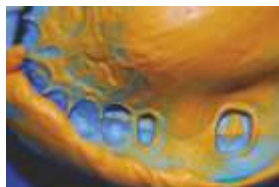
The FLEXCEED PUTTY is loaded in the tray.



The nozzle remains immersed in the material to ensure no air entrapment while injecting the FLEXCEED Light Body.



Using the intra-oral tips the FLEXCEED Light Body is directly injected around the prepared tooth.



Due to the contrasting colour the FLEXCEED impression details are easy to read.



Flexceed

Vinyl polysiloxane dental impression material

Packages:

FLEXCEED

LIGHT BODY : 2 x 78g (50mL) cartridges
8 x Mixing tips
8 x Intra-oral tips

PUTTY TYPE : 1 x Base 500g (278mL)
1 x Catalyst 500g (278mL)
1 x Measuring spoon for BASE
1 x Measuring spoon for CATALYST

FLEXCEED SPECIAL KIT

Specially designed for government, tender, army and hospitals

LIGHT BODY : 2 x 78g (50mL) cartridges
12 x Mixing tips
12 x Intra-oral tips

PUTTY TYPE : 1 x Base 540g (300mL)
1 x Catalyst 540g (300mL)
1 x Measuring spoon for BASE
1 x Measuring spoon for CATALYST

What are the physical properties of FLEXCEED?

Parameters	Flexceed Light Body (Type - 3)	Flexceed PUTTY (Type - 0)
Mixing Time	0	20 sec.
Total Working Time	2 min.	1 min.
Minimum Time in Mouth	3 min.	3 min.



Transparency in your Work

Exaclear

Clear, vinyl polysiloxane material

EXACLEAR is an innovative, clear silicone material made to fulfil the demands for high aesthetics while facilitating the way to great results.



Indication:

- Injection Moulding technique, for aesthetic or wear cases
- Temporary crown and bridge work
- Layering of composite, particularly when light-curing from palatal side
- Bite registration
- Transfer of brackets from the model to the mouth
- Transfer fibres from the model to the mouth

EXACLEAR offers optimal setting times for a fast and easy workflow. The impression can be removed intra-orally after just 2 minutes. Ideally suited for both chairside and laboratory use.



Only 2 minutes
intra-orally



Only 7 minutes
extra-orally

Advantages:

Crystal Clear View

- The high transparency offers a great visual control for details visibility.
- The unparalleled transparency allows very effective light-curing through the silicone.

Optimal Consistency

- It has an optimal consistency for an easy placement in the tray.
- It perfectly reproduces details as the product becomes fluid during insertion to perfectly adapt to the preparation.
- It is very easy to cut or drill the silicone for the injection moulding technique.
- It has a very good tear strength, while being flexible enough to be removed from the mouth.

Time Saving

- EXACLEAR allows you to skip steps in the conventional treatment and save time altogether.
- After just 2 minutes intra-orally the impression is set and can be removed. When working on a model, the material will set within 7 minutes.

Injection Moulding Technique

Discover the injection moulding technique

Chairside creation of direct veneers

EXACLEAR used together with an injectable composite such as G-aenial Universal Injectable enables clinicians to create restorations as aesthetic as indirect veneers, but quicker, more affordable and using **less invasive preparations**.



1. Initial situation



2. Fill the impression tray with EXACLEAR and make an impression of the wax-up on the model



3. After setting, remove the clear silicone from the tray



4. Drill a hole through the silicone key to create space for the composite tip



5. Isolate the neighbouring teeth, etch the enamel and apply a bonding agent



6. Place the silicone key in the mouth and inject G-aenial Universal Injectable through the hole in the key



7. Light-cure through the silicone key and then remove it



8. Remove excesses of composite with a blade



9. Final result after a few polishing steps

Packages:

Exaclear

2 Cartridge Pack

2 x 48 mL Cartridge,
6 x Mixing Tips Size L

Making a Great Impression

Impreceed

Dust-free impression material

Based on GC's extensive knowledge of alginate materials, IMPRECEED has been designed to offer users final impressions of the highest quality combined with an easier and faster mixing.



Indication:

- Impression taking for temporary indirect restorations, orthodontic models and study models.

User Guide:

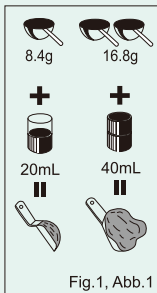


Fig.1, Abb.1

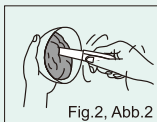


Fig.2, Abb.2

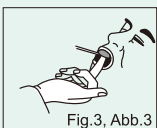


Fig.3, Abb.3

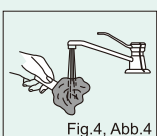


Fig.4, Abb.4

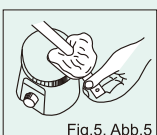


Fig.5, Abb.5

- Mix powder to water ratio is 1 spoon (8.4g) of powder and 1/2 cup (20mL) of water (Fig. 1). for 20-30 seconds.
- Load the tray with the mixed material (Fig. 2).
- Seat the loaded tray in the mouth. Refer to above table for recommended total working times (Fig. 3).
- Wait for the material to set.
- Remove impression and rinse under running tap water (Fig. 4).
- **MODEL FABRICATION 1.** Remove excess water before pouring cast. For the most accurate result, pour cast immediately after rinsing (Fig. 5)

Advantages:

- Easy and rapid powder incorporation into water within just 3 seconds
- Dust free formulation allowing fast and vigorous mixing for a smooth mixture without bubbles
- Under pressure the alginate flows into the narrowest spaces for highest detail reproduction
- Compatible with a wide range of type IV stones for a better detail reproduction and smooth model surface
- Spearmint flavour for patient comfort

Directions for Use:

	Normal Set
Mixing Time	20-30 secs.
Total Working Time	90 secs.
Setting Time	180 secs.
Minimum Time in mouth	120 secs.

Packages:

Impreceed

454g

Make Great Impressions you can Bank on

EXABITE II

Bite registration material

EXABITE II is an easy-to-handle, advanced VPS material that extrudes easily, sets quickly and was developed specifically for occlusal registration.



Indication:

- Checking bite registration.

Advantages:

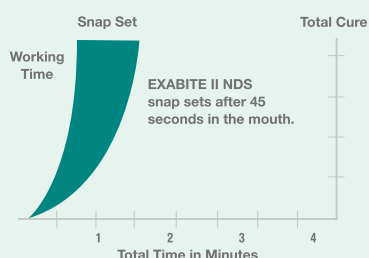
- Mixing and application directly from the cartridge
- Thixotropic properties with an ideal balance between stability and fluidity
- Setting time: only 45 sec
- High stability for safe transfer of models to an articulator
- Easy trimming and carving

Directions for Use:

45-Second Formulation

With a working time of up to 45 seconds, EXABITE II then "snap" sets in the mouth in 45 seconds, for reduced chance of distortion due to movement.

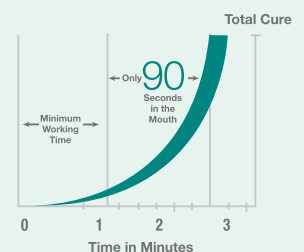
†Data on file at GC America Inc.



Sets Extremely Hard

With an 87 Plus durometer rating, EXABITE II offers an extremely hard set, making it easy to trim and carve, and provides a more precise articulation.

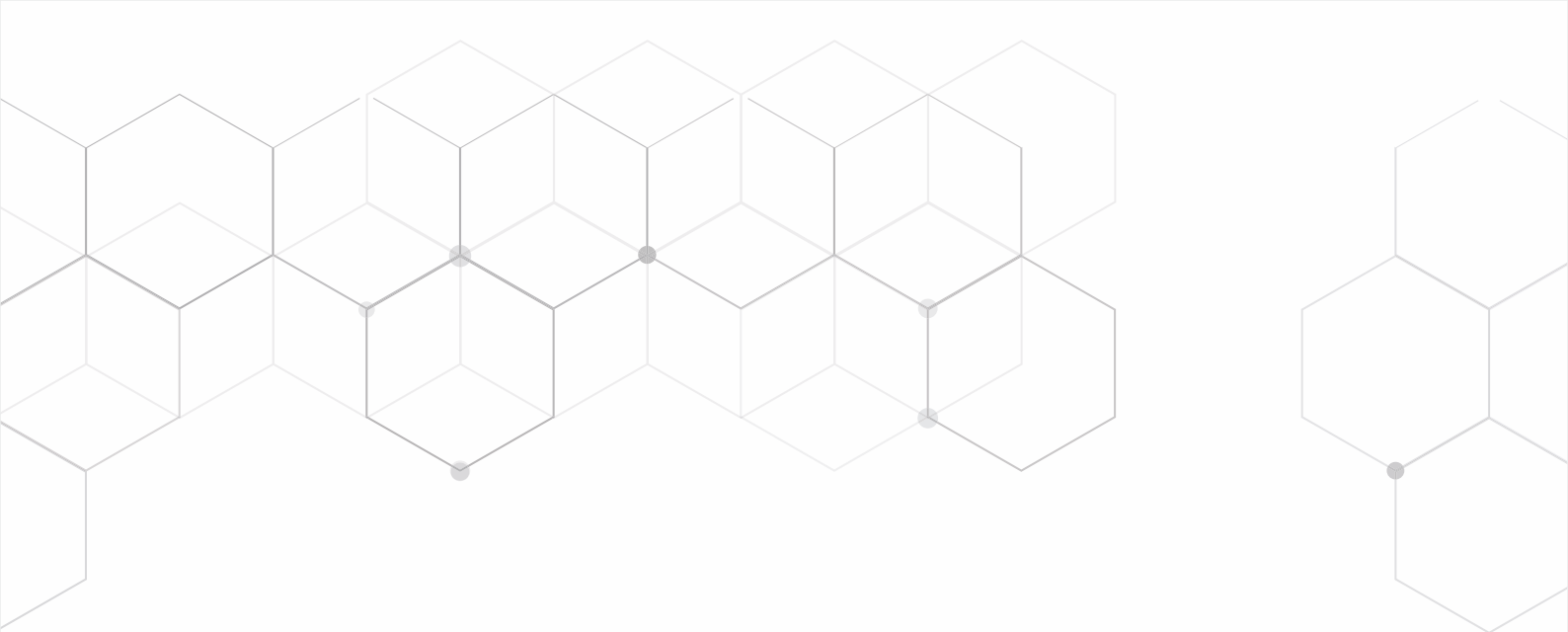
†Data on file at GC America Inc.



Packages:

Exabite II NDS

Exabite II NDS - 2 x Cartridges (48mL) , 12 x Mixing Tips



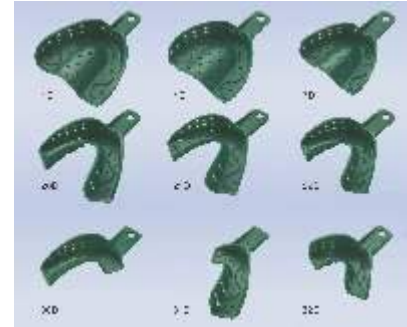
IMPRESSION MAKING

ACCESSORIES

COE Spacer Trays

Disposable plastic stock impression trays

COE Spacer Trays are disposable, perforated impression trays made of rigid plastic designed with a unique spacer in zig-zag design to ensure enough space is present around the teeth for the impression material.



Advantages:

- Unique zig-zag spacers minimizes cusp contact with the tray ensuring seating of tray at the correct depth
- Anatomical design reduces pressure on soft tissue
- Strong rigid construction provides excellent stability and support

Packages:

COE Spacer Trays

Spacer Tray Perf Master Pack ASST
 Spacer Tray Perf #1D Large Upper (Pk of 432)
 Spacer Tray Perf #4D Medium Upper (Pk of 432)
 Spacer Tray Perf #7D Small Upper (Pk of 432)
 Spacer Tray Perf #20D Large Lower (Pk of 432)
 Spacer Tray Perf #21D Medium Lower (Pk of 432)
 Spacer Tray Perf #22D Small Lower (Pk of 432)
 Spacer Tray Perf #30D U/Lft, L/Rt (Pk of 432)
 Spacer Tray Perf Partial #31D U/Rt, L/Lft (Pk of 432)
 Spacer Tray Perf Partial #32D Anterior (Pk of 432)

Cartridge Dispenser II

Universal Dispenser for all GC Vinyl Polysiloxane Impression Material in Cartridges.

Packages:

Cartridge Dispenser II

Cartridge Dispenser II NDS



VPS Tray Adhesive

Used to coat all impression trays (including perforated and custom trays) prior to placing the VPS impression material in the tray to prevent pull-away and distortion during impression removal.

Packages:

VPS Tray Adhesive

VPS Universal Adhesive, 12 x 7mL bottle



Prevention & Maintenance



Prevent



Chairside



Easy handling

TISSUE CONDITIONING

FOLLOW UP - MAINTENANCE

A Perfect Fit for Ultimate Comfort

RELIN Soft & RELIN Extra Soft

Ready-to-use, temporary soft silicone based relin materials



Indication:	Advantages:
<ul style="list-style-type: none"> Classic indications like sensitive mucosa, pressure points, sharp or bony alveolar ridges and undercuts need special attention. 	<ul style="list-style-type: none"> Vinyl polysiloxane materials in cartridges offer easy direct dispensing The surface of the material remains smooth and clean over time Indicated for chairside and laboratory relining
Reline Soft	Reline Extra Soft
<ul style="list-style-type: none"> Helps to compensate resorption processes Resilient: acts as a cushion between the denture and oral tissue to buffer masticatory pressure and solves anatomical problems 	<ul style="list-style-type: none"> Helps wound healing thanks to an extremely soft consistency Normalises irritated tissue before you produce a new denture, relin or rebase

Clinical Case with Reline Soft



Resorption and thin mucosa



Relieve the area to be relined



Apply Reline Primer and gently dry



Apply Reline (Extra) Soft. Working time is 2'00" at 23 °C



Distribute over the denture with a spatula



Seat denture in mouth and muscle trim. Retain in situ for 5'00"



Trim excess with an appropriate instrument



Finish with a Reline Silicone Point (< 10.000 RPM)



For optimal smoothness, apply mixed GC Reline Modifier A & B



Relined denture

Packages:

RELIN Soft & RELIN Extra Soft

Reline Soft - Intro Kit
 Reline Soft Cartridge - 48ml
 Reline Extra Soft - Intro Kit
 Reline Extra Soft Cartridge - 48ml
 Reline Primer R - 13ml
 Reline Modifier 1-1 Pkg

SOFT-LINER

Acrylic temporary relining material

GC Soft-Liner is acrylic temporary relining material for the temporary rebasing (relining) of acrylic dentures & tissue conditioning.



Advantages:

- Fast application
- No heat irritation
- Easy to trim
- Good retention
- Smooth surface minimises unwanted food debris retention
- Simple to remove from the denture at the end of the treatment

Directions for Use:

- **PREPARATION** a) Clean the contact surface thoroughly using pumice and water and abrade the area to be relined.
- **MIXING** a) The standard powder/liquid ratio is 2.2 g/1.8 g, (first graduation on powder measure to 4 graduations of the liquid syringe). Note Consistency may be varied by changing powder/ liquid ratio. b) Measure into the glass jar and mix for 30-60 seconds.
- **RELINING** a) Coat the mixture onto the denture as evenly as possible. b) Insert the denture in the mouth, muscle trim and retain it in the centric occlusal position for 4-5 minutes. c) Remove and inspect for defects. d) Dip the denture into cold water, and trim away excess at the periphery with a heated sharp instrument.

Packages:

SOFT-LINER

Soft Liner 1-1 Package
Soft Liner 100g Powder
Soft Liner 100g Liquid

COE-COMFORT

Tissue conditioner

COE-COMFORT is a self-curing, chairside edentulous tissue conditioner used to restore sound form and condition to the underlying tissue. Acting as a cushion to the tissue, a lining of COE-COMFORT allows the denture-bearing tissue to recover and return to a normal, healthy condition.



Indications	Advantages
<ul style="list-style-type: none"> ■ Lining of ill fitting dentures as a tissue conditioner to facilitate recovery of damaged soft tissue. ■ Functional impression material for full dentures. ■ Functional impression material for relining the edentulous area of distal extension partials. Impression material for construction of obturators. ■ Lining of surgical and periodontal splints. Diagnostic aid to locate pressure areas on dentures. Liner to stabilize base tray during recording of jaw relations. 	<ul style="list-style-type: none"> ■ Easy to mix and apply ■ Mixes in 30 seconds ■ Can be used as a functional impression material ■ Contains zinc undecylenate ■ Minimizes odor and fungal growth <p>Packages:</p> <p>COE-COMFORT</p> <p>COE Comfort Professional Package COE Soft Professional Package</p>

Direction for Use:

- **Pre-treatment considerations:** Before starting treatment an impression needs to be taken to compare if the existing dentures do not provide good tissue coverage and are not in proper centric and vertical relationship, they should be rebased and corrected before beginning treatment.
- **Preparation of the denture:** Using a handpiece, remove undercuts to relieve the denture to prevent impingement. Wash and dry the denture thoroughly. Coat buccal and labial flanges with COE LUBRICANT to prevent adhesion of COE-COMFORT.
- **Mixing:** Mix 5ml of COE-COMFORT liquid with COE-COMFORT powder (6g) slowly for 30 seconds. Set aside the mixture for approximately 1 minute until it flows sluggishly from the spatula.
- **Lining the denture:** Spread the mixture evenly on the surface to be coated, including the peripheral borders. After four or five minutes remove the denture and rinse thoroughly in cold water. Trim away excess material.
- **Further treatment:** Full restoration of tissue to a sound condition takes time and several repeat applications of COE-COMFORT may be necessary. Ask the patient to return 2-4 days after the initial treatment, and each subsequent treatment.

COE-SOFT

Soft relining material

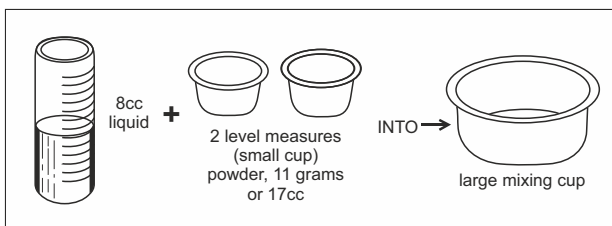
Acrylic temporary relining material to buffer masticatory pressure for partial and full dentures.



Indications	Advantages
<ul style="list-style-type: none"> ■ A temporary lining for acrylic dentures. For use in chairside procedures. 	<ul style="list-style-type: none"> ■ Optimal fit of denture ■ Avoids tissue irritation ■ Neutral taste ■ Excellent tolerability ■ For long time temporary relining 3-6 month

Direction for Use:

- Preparation of the denture: Relieve and roughen the area of the denture to be relined. Clean and dry the denture thoroughly. Coat labial and buccal surfaces of the denture with COE LUBRICANT. Do not apply coating within 3mm (1/8 inch) of the peripheral border.
- Preparation of COE-SOFT: Mix powder / liquid ratio of 11g powder to 8ml liquid for 30 seconds.
- **Application:** Spread the mixture of COE-SOFT over the area to be relined. Seat the denture in the manner of taking an impression and instruct the patient to close lightly into occlusion. After 3 minutes instruct the patient to move lips and cheeks so that a muscle trimmed periphery is obtained. Remove the denture and rinse under cold water. Trim away excess material. Re-seat the denture and instruct the patient to close FIRMLY into occlusion, and to hold this position for 5 minutes. Remove the denture and rinse again in cold water.
- **Finishing:** When curing is complete, trim away excess.
- **Patient Advice:** Advise the patient NOT to use a brush or abrasive (such as toothpaste) on the lining. Cleaning is best achieved by holding it under cold running water and wiping with wet cotton.



Packages:

COE-SOFT PROFESSIONAL PACKAGE

Powder 170g Liquid 177mL & Accessories

COE-PAK

Periodontal dressing in tubes

Two component material for wound dressing, to cover stitches or to stabilize loose teeth.



Indications

- For surgical dressing and periodontal pack

Advantages

- Easily mouldable
- Elastic consistency
- Patient friendly
- Supports process of healing
- Eugenol free
- Compatible with resins

Direction for Use:

COE-PAK REGULAR	
After mixing, ready to use	3 mins.
Consistency	plastic
Working Time	10-15 mins.
Ability to bond one piece of material to another	10-15 mins.
Final hardness	30 mins. (still resilient but not brittle)

Packages:

COE-PAK

COE-PAK Periodontal Dressing
Standard Package - Pink



GC INDIA DENTAL PVT. LTD.

#233, Phase 3, IDA Pashamylaram,
Sangareddy District - 502307
Telangana, India. Tel.: +91 8455 224 844

Email: info.gcindia@gc.dental


Web: www.gcindiadental.com

Connect us on:

 <https://www.facebook.com/GcIndiaDental1>

 https://twitter.com/GCIndia_Dental

 <https://www.linkedin.com/in/gcindiadental/>

 <https://www.instagram.com/gcindiadental/>

 <https://www.youtube.com/channel/UCyvajHQBoaSk2tHEgC-KCLw>



GC INDIA