



Natural fit  
and  
flexibility



CERASMART™270  
from GC

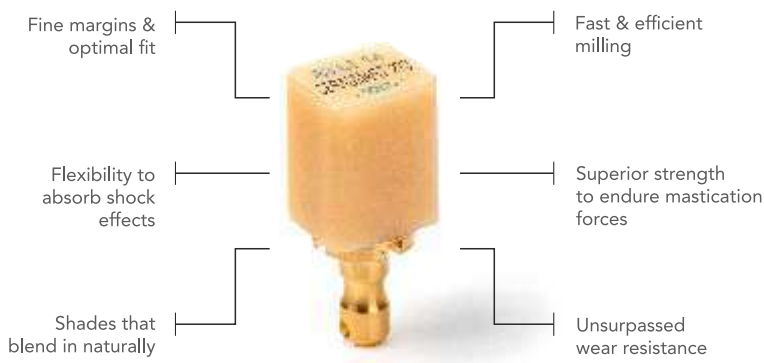
Force Absorbing Hybrid Ceramic  
CAD/CAM Block



**CERASMART™270** is an aesthetic hybrid block made to provide fast and long lasting clinical success.

- Thanks to the newly developed "Full Coverage Silane Coating" (FSC) with improved nanofiller technology, CERASMART™270 offers high physical and aesthetic properties.
- The milling is fast and efficient, making it possible to create a qualitative restoration with fine margins and optimal fit in a very short time.
- Additionally, it can be polished or characterised for more vibrant aesthetics. CERASMART™270 is the right block to use, be it for a quick onlay or a challenging wear case.

**For restoration that pass the test of time**

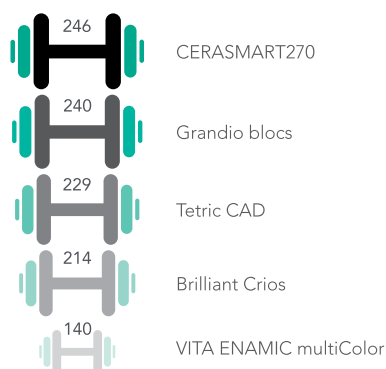


**Indications:**

- **Metal free indirect restorations**
  - full crown
  - onlay
  - inlay
  - laminated veneer
- **Implant supported crown**
  - The High Translucency (HT) blocks are mainly used to replace enamel: inlays, onlays, veneers, partial and full crowns.
  - The Low Translucency blocks are intended for the replacement of dentin and enamel structures: to mask discoloured preparations, in particular for crowns.

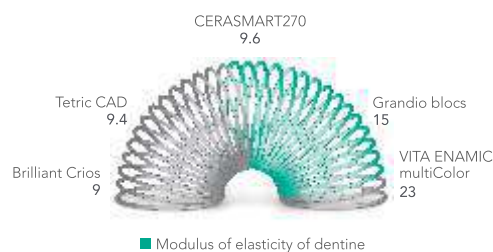
**Blending Strength & Flexibility together**

- Superior strength to endure mastication forces
- High filler rate thanks to FSC technology
- Improved flexural strength for restorations that resist time
- High resistance to fracture



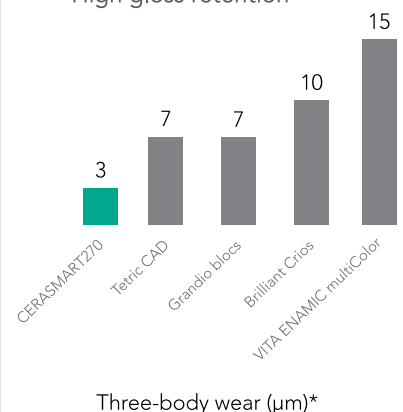
Three point flexural strength (MPa)\*

- Flexibility to absorb shock effects
  - Less stress peaks during chewing
  - Decreased risk of material fatigue
  - Extremely well suited for implant restorations



Modulus of elasticity (GPa)\*

- Wear resistance for long lasting restorations
  - Very low wear
  - Ideal for bruxist patients
  - High gloss retention



Three-body wear (µm)\*

\*Source: GC R&D, Japan, 2018. Data on file

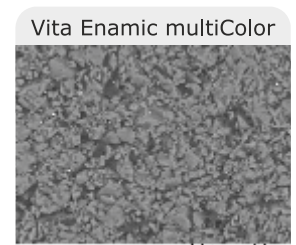
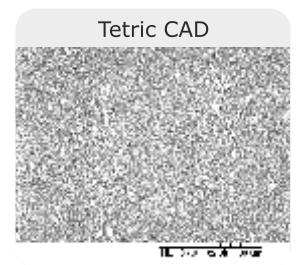
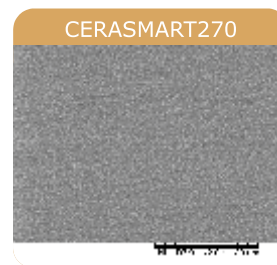
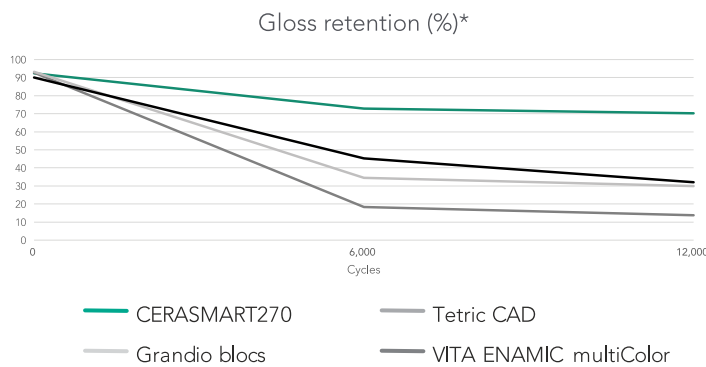
## Aesthetics and Precision

- Sharp margins that ensure a smooth transition



Very precise and smooth margins, without chipping, after quick and easy milling to guarantee a natural fit.

- Superior polishability and gloss retention



SEM images of CERASMART270 in comparison to competitors\*

Thanks to its fine-filler content, CERASMART™270 is very easily polished and maintains a much higher gloss rate than its competitors for the same amount of time.

- Shades that blend in naturally



For a **natural smile** using only one shade.



Courtesy of MDT C. Hannker, Germany

- Optimal fluorescence and translucency

Natural tooth CERASMART270



**Beautiful colours** for a natural appearance. Warm, lifelike shades with an **optimally balanced fluorescence** and **opalescence**.

Natural tooth CERASMART270



## Procedure: Beautiful and Convenient

- Choose your finishing point

### Characterisation

Because everything looks better in colour

Add character to your restoration with the stroke of a brush using OPTIGLAZE color, a ready to use and wear resistant glossy coating.



You can choose from a wide variety of colours or use the Clear glaze to add gloss only.



### Polishing

Fast and easy polishing

An impressive gloss level can be obtained by just some simple polishing steps.



Polishing can be done with your standard polishing wheels and burs.

- Easy and fast pre-treatment and luting options

Etch or Sandblast



CERASMART270 is the only hybrid ceramic material that can be etched with hydrofluoric acid or can be sandblasted.

Silane or MDP



In both cases, the use of the universal G-Multi PRIMER will always be a good choice, since it contains both silane and MDP.

Pre-treat the tooth



Choose your etching mode depending on the presence of enamel and dentin on your preparation. Apply a bonding agent such as G-Premio BOND.

Lute



Use an adhesive luting agent such as G-CEM LinkForce or G-CEM Veneer.

Courtesy of Dr. P. Dimitrov, Bulgaria

- Luting options for restorations that last



### G-CEM LinkForce

Universal dual cure resin cement with trusted performance.

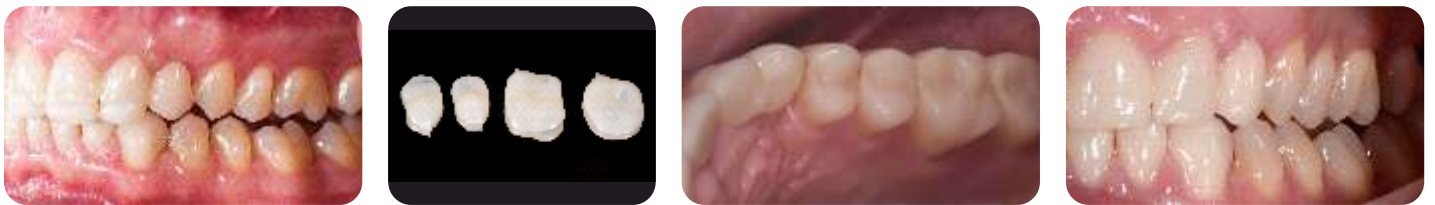


Precision that lasts.

Aesthetics that do not fade.

### Increase of the vertical dimension

With its high flexural strength and breaking energy, CERASMART™270 is perfectly suited to solve challenging occlusal situations. Its balanced surface hardness will be especially beneficial in reducing the wear of the opposing dentition, while ensuring a long-lasting gloss of the restoration.



Courtesy of Dr. C. Moussally, France

### Single visit restorations

With CERASMART™270 you can create durable aesthetic restorations with optimal fit in a single visit. The restoration will be milled in a few minutes and yet it will be very friendly to your milling burs.

### Replacement of a large composite restoration with parapulpal pins

The right choice for large, load-bearing restorations.



Courtesy of Dr. D. Gerdolle, Switzerland

### Implant-supported crown

The elasticity of CERASMART™270 is especially useful when placing an implant supported crown.



Courtesy of Dr. J. Tapia Guadix, Spain

### Restoration of a second molar

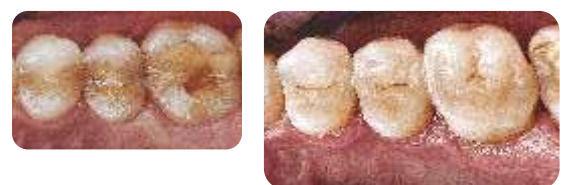
Natural blending with only one shade make it a great material for a standard molar restoration.



Courtesy of Dr. Y. Roos, Spain

### Restoration of a quadrant

Perfect for creating several restorations in one appointment.



Courtesy of Dr. G. Witkowski, Poland

## Shades with added chrome:

Choice of translucency to adapt all preparations



### CERASMART™270

CEREC - Qty.: 5 pcs.

UNIVERSAL - Qty.: 5 pcs.



CEREC						
Shade	Size	Ref.	Size	Ref.	Size	Ref.
A1 HT	12	12540	14	12576	14L	12612
A2 HT	12	12541	14	12577	14L	12613
A3 HT	12	12542	14	12578	14L	12614
A3.5 HT	12	12543	14	12579	14L	12615
B1 HT	12	12544	14	12580	14L	12616
A1 LT	12	12545	14	12581	14L	12617
A2 LT	12	12546	14	12582	14L	12618
A3 LT	12	12547	14	12583	14L	12619
A3.5 LT	12	12548	14	12584	14L	12620
B1 LT	12	12550	14	12586	14L	12622
BL	12	12551	14	12587	14L	12623

UNIVERSAL						
Shade	Size	Ref.	Size	Ref.	Size	Ref.
A1 HT	12	12552	14	12588	14L	12624
A2 HT	12	12553	14	12589	14L	12625
A3 HT	12	12554	14	12590	14L	12626
A3.5 HT	12	12555	14	12591	14L	12627
B1 HT	12	12556	14	12592	14L	12628
A1 LT	12	12557	14	12593	14L	12629
A2 LT	12	12558	14	12594	14L	12630
A3 LT	12	12559	14	12595	14L	12631
A3.5 LT	12	12560	14	12596	14L	12632
B1 LT	12	12562	14	12598	14L	12634
BL	12	12563	14	12599	14L	12635

## Related Products



G-CEM LinkForce



OPTIGLAZE color



DIAPOLISHER Paste

DIAPOLISHER Paste, G-CEM LinkForce, G-Premio BOND, G-Multi PRIMER and OPTIGLAZE color are trademarks of GC.  
Brilliant Crios, Grandio blocs, Tetric CAD, VITA Enamic multiColor and CEREC are not trademarks of GC.



**GC INDIA DENTAL PVT. LTD.**

#233, Phase 3, IDA Pashamylaram,  
Sangareddy District - 502307 Telangana, India.

Tel.: +91 8455 224 844

Email: info.gcindia@gc.dental

Web: www.gcindia.com

Connect us on:

<https://www.facebook.com/GcIndiaDental1>

[https://twitter.com/GCIndia\\_Dental](https://twitter.com/GCIndia_Dental)

<https://www.linkedin.com/in/gcindia/dental/>

<https://www.instagram.com/gcindia/dental/>

<https://www.youtube.com/channel/UCYvajHQBoaSk2tHEgC-KLw>



GC INDIA