
The Art and Science
behind creating
Beautiful Smiles
by G-ænial from GC



Since 1921
Towards Century of Health

GC's aesthetic solutions for every case with exactly the handling you prefer.

G-ænial Composite

G-ænial ANTERIOR

A medium consistency which won't stick or slump, making it ideal for free-hand contouring in aesthetic restorations. G-ænial ANTERIOR brings natural vitality and exceptional shade matching for superior aesthetic results.



G-ænial POSTERIOR

With a firmer consistency, this composite provides a more packable feel with just the right amount of flow to ensure complete adaptation to the cavity floor and walls. G-ænial POSTERIOR is easy to carve and optimally shaded for perfect posterior restorations.



G-ænial UNIVERSAL FLO

With its controlled flow, G-ænial UNIVERSAL FLO injects like a flowable, yet will stack like a traditional composite. A world-class composite with exceptional strength, polish and versatility which can be used for all restorative indications.



Bond with No Boundaries

G-Premio BOND

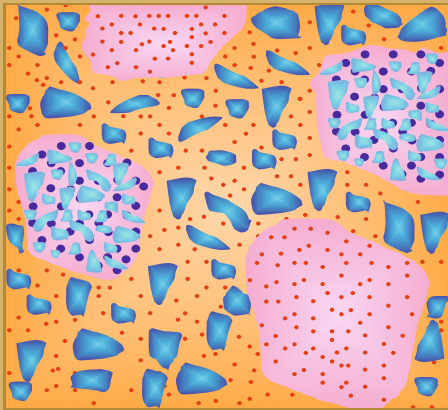
Enjoy a premium bonding experience like no other with G-Premio BOND, the 8th generation universal Bonding Agent.



THE ART OF CREATING INVISIBLE & LONG - LASTING AESTHETICS

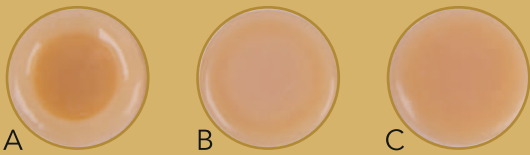
G-ænial ANTERIOR & POSTERIOR - Unique Composition

G-ænial is a light cured, radiopaque microfill hybrid composite restoration with diverse multifaceted particles and combination of fillers - its size and distribution within is carefully calculated so that when combined, it contributes to its low level of shrinkage stress and provides the best aesthetic results and exceptional chameleon effect which can be achieved with just one shade of G-ænial.



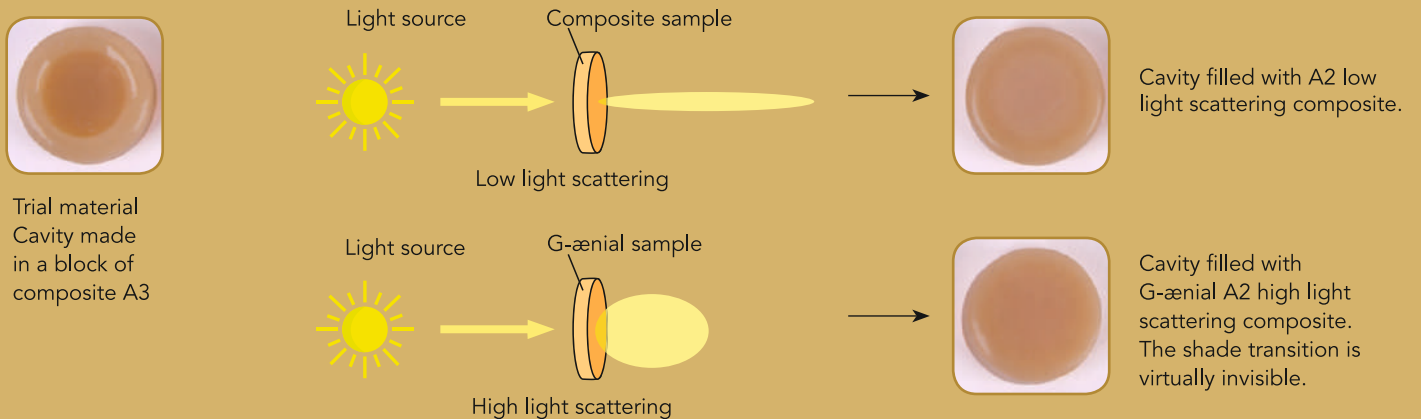
Filler: Two different kind of prepolymerised fillers are used, offering clinical useful radiopacity while keeping perfect aesthetics, excellent physical performance and user-friendliness for both G-ænial ANTERIOR and POSTERIOR.

Matrix: The matrix consists of a mixture of urethane dimethacrylate (UDMA) and dimethacrylate co-monomers. G-ænial is bis-GMA free.



- A. Initial situation: cavity in a composite block; shade A3
- B. Cavity filled with competitor's material - low light scattering composite; shade A2
- C. Cavity filled with G-ænial - high light scattering composite; shade A2

Demonstrating how high light scattering creates a chameleon effect



G-ænial ANTERIOR - Beautiful natural high gloss restorations

G-ænial ANTERIOR is the material of choice when you are looking for a restorative that will meet the aesthetic expectations of all your patients. Being a forgiving composite that offers beautiful and natural looking high gloss restorations whilst being extremely easy to use, makes it a composite suited to everyday use.

■ Optimised Handling

With G-ænial ANTERIOR you gain total control over your results with its smooth, non-sticky and sculptable handling.

■ Shade Matching

With simple and easy to choose shades of G-ænial ANTERIOR, assures predictable value based Aesthetics to your patients.

■ High Gloss Finish

G-ænial ANTERIOR polishes quickly to a high gloss finish and the diverse filler surfaces within G-ænial ensure the surface really does shine! For best results, we recommend diamond burs, polishing points and discs. To obtain a high gloss lustre, use GC DIA polishing paste in low speed for 15 minutes.

■ Age aligned Shade System

Enamel shade selection based on the age of the patient.

■ More Working Time

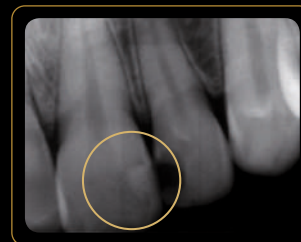
Reduce stress with working time under ambient light extended to 4 minutes.

■ Simplicity, even when complexity presents

For most restorations, the use of standard shades alone is sufficient to produce beautiful, natural results. For complex cases, two additional shade groups have been defined; Inside and Outside shades.



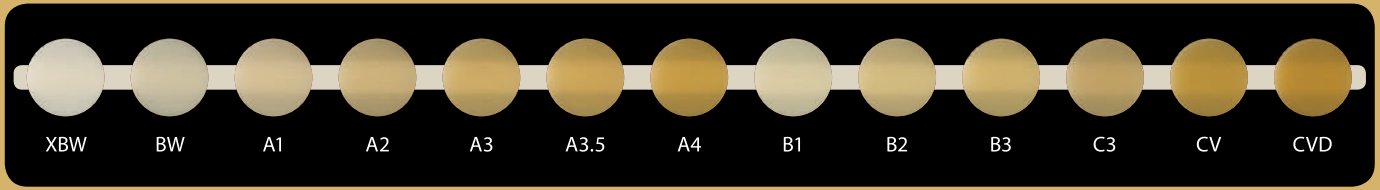
Prof. M Peumans, Belgium



Dr. J Sabbagh, Belgium

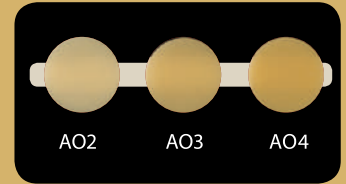
G-ænial ANTERIOR 140% AI radiopacity

G-ænial ANTERIOR - Standard shade range



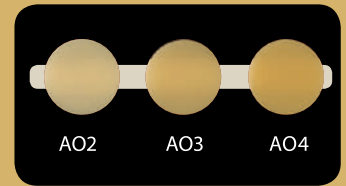
■ Inside shades

Inside shades add opacity and eradicate dark shine through often encountered in class IV restorations. They can also be placed behind a standard shade to add warmth to the final colour. Inside shades are particularly useful to mask dentine discolouration and to hide the preparation line in large class V restorations.



■ Outside shades

Outside shades replicate enamel and give more depth to the final restoration. The choice of the enamel shade is made according to the age of the patient. Outside shades will also help to create specific visual effects.



	<p>JE - Junior Enamel for young patients</p>		<p>SE - Senior Enamel for senior patients</p>		<p>IE - Incisal Enamel can be applied on the enamel occlusal third and proximal surfaces, particularly with young patients</p>
	<p>AE - Adult Enamel for adult patients</p>		<p>TE - Translucent Enamel simulates a depth-effect within restorations</p>		<p>CVE - Cervical Enamel offers the right translucency to let the darker cervical dentine shine through</p>

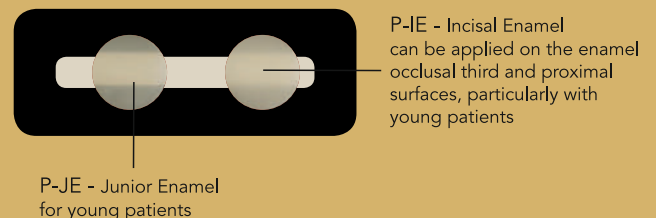
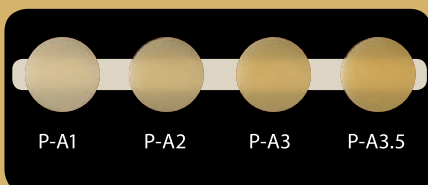
G-ænial POSTERIOR - Low stress simplicity

G-ænial POSTERIOR features high fracture toughness and reduced polymerisation shrinkage stress to help reduce the risk of long term failure.

■ Simple Shade Selection

G-ænial POSTERIOR has a simple selection of four basic shades that will blend beautifully with the surrounding tooth colours.

G-ænial POSTERIOR has two outside enamel shades P-JE and P-IE. These shades copy the value of a tooth, to mimic age-dependent changes in the enamel and to give more depth to a final restoration.



G-ænial POSTERIOR - Low stress simplicity

Adapted shade system



Adequate Radiopacity of 252%



G-ænial POSTERIOR 250% AI radiopacity

Dr E D Incau, France

Increased Filler Content

Superior strength and longevity.

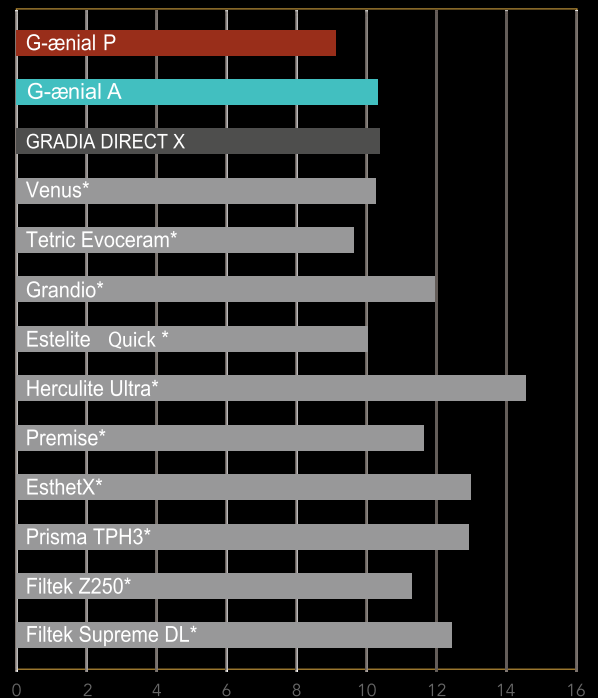
Low Shrinkage Stress

G-ænial is formulated for both strength and low shrinkage stress. Posterior restorations are often at greater risk of marginal breakdown and G-ænial helps minimise the risk through reduced polymerisation shrinkage stress at the adhesive tooth interface.

Firm Handling

G-ænial POSTERIOR has a more packable consistency, yet flows under pressure to ensure intimate adaptation to the cavity walls due to non-sticky packable viscosity.

Shrinkage Stress (N)



GC R&D Department

THE ART OF CREATING INJECTABLE AESTHETICS

G-ænial UNIVERSAL FLO - The world's first truly universal injectable composite

G-ænial UNIVERSAL FLO is a restorative composite strong enough to use on occlusal surfaces, yet sufficiently versatile to fit all clinical situations - from the smallest Class V restorations to the largest Class II cavities.

Full Strength

Injectable Composite for all cavity classifications

Beautiful Aesthetics

with a high gloss finish that lasts

Sets Rock Hard

with exceptional wear resistance

No Slumping

yet wets and adapts for fast application

Self Polishing

and fast finishing with ideal gloss retention

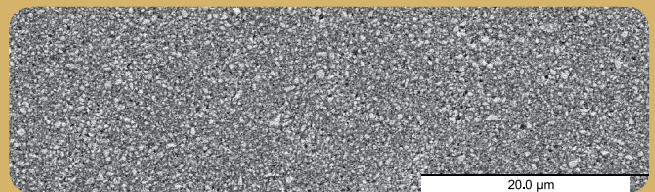
Universal Composite

with the convenience of a flowable syringe

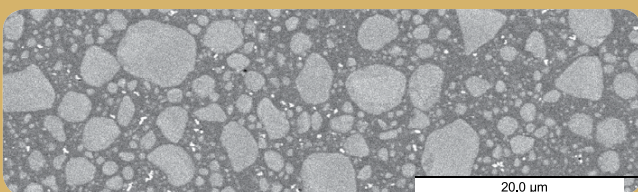


Strength Through Filler Innovation

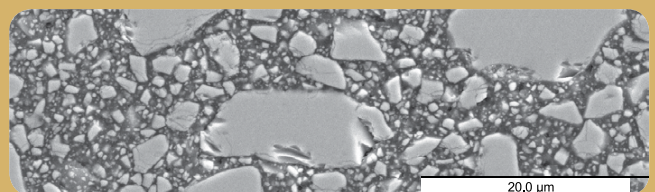
A truly universal Injectable Composite that is strong, polishable and wear resistant could only be achieved through the development of new filler technologies.



G-ænial UNIVERSAL FLO. Features 200-nm strontium glass fillers homogenously dispersed for high flexural strength and wear resistance



Nano composite. Typically contains spherical nano clusters made up of agglomerated nano fillers of varying sizes



Micro Hybrid. Typically contains a range of glass and nano fillers of varying sizes

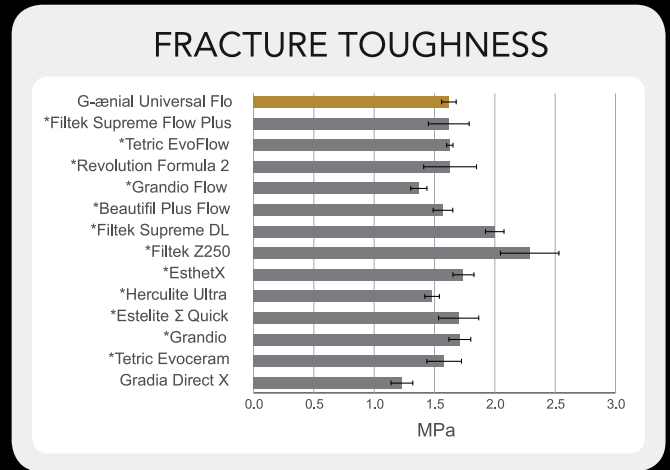
G-ænial Universal FLO - Physical properties

■ An Injectable Composite with Impressive Strength

The flexural strength of G-ænial UNIVERSAL FLO is unmatched by most conventional hybrid composites, giving confidence for its universal applications.

■ Wear Resistance and Manufacturing Innovation

The high filler loading (69% wt) and homogenous dispersion of filler required for a high strength Universal Composite is achieved through the introduction of new manufacturing processes.



R&D Dept., GC Corporation

■ Economical and Ergonomic Dispensing

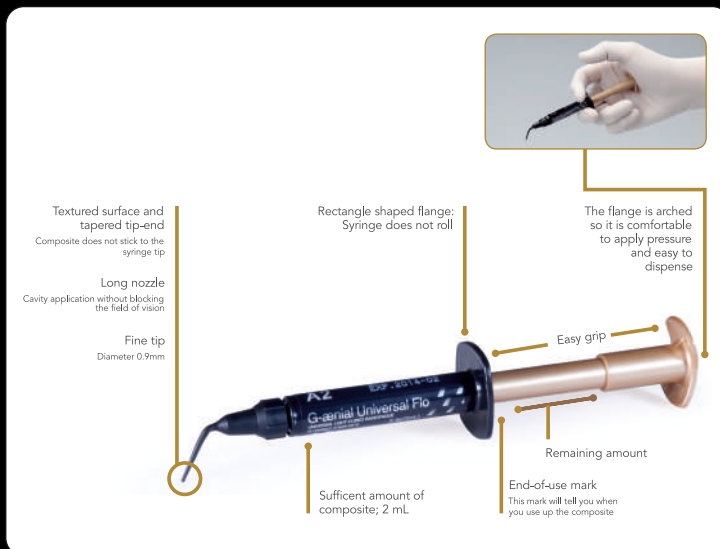
G-ænial UNIVERSAL FLO is delivered in a purpose-made syringe, that has drawn on the convenience of flowable composite syringe design, and has then been enhanced to create a more economic and ergonomic Injectable Composite design.

■ Controlled Fluidity

Injects like a flowable, yet will stack like a traditional composite.



Dr. M. Miyazaki, Tokyo, Japan

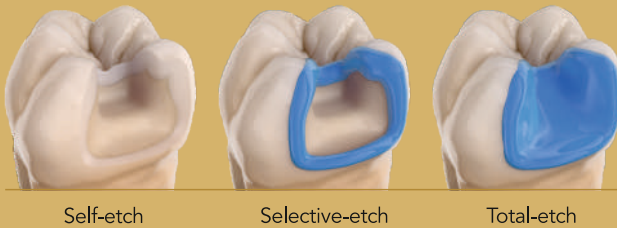


THE ART OF CREATING BOND WITH NO BOUNDARIES

Enjoy a premium bonding experience like no other with G-Premio BOND

GC G-Premio BOND is a universal, 8th generation bonding agent that is compatible with total-etch, self-etch and selective etch techniques providing excellent versatility.

Universal Etching Modes



Self-etch

Selective-etch

Total-etch

Universal Indications



Direct bonding*

Repair cases*

Hypersensitivity treatment**

* Dr. S. Koide, Japan ** Dr. E. Sauji, Japan

Universal Acclaim

- Brilliant bottle design.
- Fast and simple, no rubbing or complex application procedures.
- Chemically bonds within the first few seconds of application.
- Visible during application, invisible after light-curing.
- Wets the tooth just like water.
- Perfect margins.
- No patient discomfort.

Premium Bonding with G-Premio BOND

- Premium performance in any clinical setting
- An easy and forgiving application procedure with minimal opportunity for handling errors
- A higher content of photo-initiator gives more efficient light-curing
- The fast, 25 sec self-etch application and chemical adhesion is perfect for paediatric bonding or clinical cases where moisture control is challenging
- Its yellow colour prior to light-curing gives visual control of application
- Stable formulation with a 2-year shelf life and no refrigeration required



Yellow on application



Invisible after light-curing

Dr. S. Köken, Turkey

G-Premio BOND

Premium Adhesive Bond Strengths

- Exceptional bond strengths to enamel and dentine, regardless of the etching mode.
- 4-MET, MDP and MDTP universalise its bonding capabilities, providing strong adhesion to: GIC, metals (including precious), composites, zirconia and alumina.
- Combines with Ceramic Primer II for optimum adhesion to glass ceramics.



4-MET
Adhesion to enamel
and dentine

MDP
Adhesion to enamel, dentine,
resin and non-precious
metal cores

MDTP
Adhesion to precious metals

Premium Comfort for your Patients

- Applies like no other bond, with exceptional wetting characteristics.
- Has an innate ability to penetrate and form an immediate chemical bond.
- Eliminates patient discomfort.
- Treatment option for cervical hypersensitivity.



Premium Margin Aesthetics

- Forms an ultra-thin, hydrophobic bond layer to deliver invisible margins.
- All water is removed from the bond layer during air drying, to ensure bond durability and a very low 3µm film thickness.
- Smart filler technology produces a high filler density in a fluid consistency bond.
- Enhanced photo-initiators ensure a stronger bond layer after light-curing.
- HEMA-free.



Premium Value

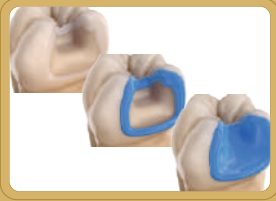
- Unique silicon bottle gives total control over dispensing.
- A thin nozzle design minimises material wastage and guarantees up to 300 applications per 5ml bottle.



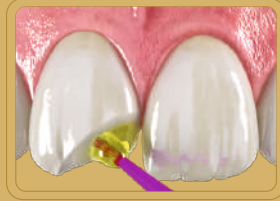
G-Premio BOND

Direct Bonding Technique

A simple application technique with immediate adhesion and high bond strengths provides an ideal platform for clinical success in direct bonding procedures.



1. Select preferred technique. Etch for 10-15sec, rinse & dry.



2. Apply G-Premio BOND and wait for 10sec.



3. Dry for 5sec at MAX air pressure.



4. Light-cure for 10sec.

Repair application technique

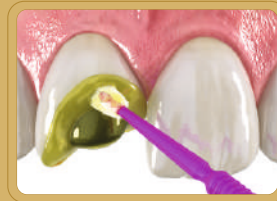
G-Premio BOND enables excellent adhesion to all substrates after thermocycling, recognising that the use of a separate primer (Ceramic Primer) together with G-Premio BOND is essential on glass ceramics to ensure durable adhesion.



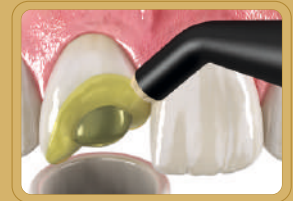
1. Roughen the surface; Rinse and dry.



2. If there is a glass ceramic surface, apply Ceramic Primer and dry.



3. Apply G-Premio BOND to all surfaces to be repaired and leave for 10sec.



4. Dry for 5sec at MAX air pressure.



5. Light-cure for 10sec.

Accessories

- Diapolisher Paste (diamond polishing paste for composite and porcelain)
- Composite Manipulation Brush

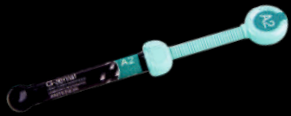


Discover and create beautiful Aesthetics

G-ænia ANTERIOR

The smooth beauty

Available in 2.7 ml (4.7g) syringe
Standard: XBW, BW, A1, A2, A3,
A3.5, A4, B1, B2, B3, C3, CV, CVD
Inside: AO2, AO3, AO4,
Outside: JE, AE, SE, IE, TE, CVE



G-ænia POSTERIOR

The firmer aesthetics

Available in 2.7mL (5.5g) syringe
Standard: P-A1, P-A2(E), P-A3(E), P-A3.5,
Outside: P-JE, P-IE



G-ænia UNIVERSAL FLO

The injectable universal

Available in 2mL (3.4g) syringe
Standard: A1, A2, A3, B1, B2
Inside: AO2, AO3



G-Premio BOND

One component light- cure
universal adhesive

Available in 5mL bottle



G-ænia UNITIP

A2, AE, AO2, JE, SE



GC India Dental Pvt. Ltd.

Plot No. 233, Phase III, IDA Pashamylaram,
Pattancheru Mandal, Medak District - TS 502 307
Tel. : +91 8455 224 844 Toll Free : 1800-425-3132
Email: info.gcindia@gc.dental | Web: www.gcindiadental.com

Connect us on:

- <https://www.facebook.com/GcIndiaDental1>
- https://twitter.com/GCIndia_Dental
- in.linkedin.com/pub/gc-india-dental/a2/435/63/
- <http://www.pinterest.com/gcindiadental/>
- <http://plus.google.com/+gcindiadental>