

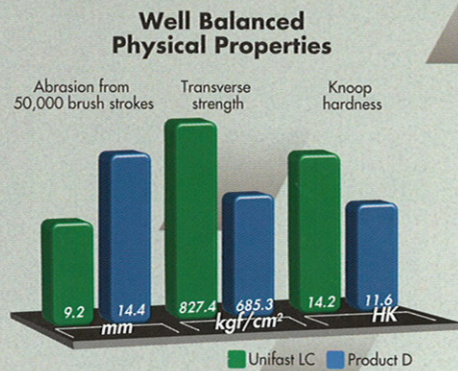
It's Unifast LC.

Achieve Remarkable Results.

With well-balanced physical properties like fine easy-to-mix powders, high transverse strength and resistance to discoloration, Unifast LC produces an ultra smooth, bubble-free and accurate surface which resists breakage, fractures and abrasion.

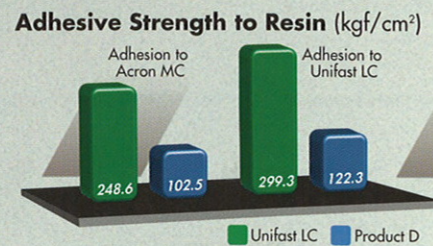
Unifast LC is available in five VITA® shades plus a translucent shade.

*VITA is a registered trademark of Vita Zahnfabrik.



Unifast LC Firmly Adheres to Any Acrylic Resin.

You can use Unifast LC with other special purpose resins for maximum versatility. It can be used in combination with other materials (like Acron™ MC, COE-LOR™ R.T.C. and Perma-Cryl™ denture base and sheet type resins) depending on the needs of the individual case. Unifast LC is ideal for a wide range of brush-on or direct applications not suitable for traditional chemical cure resins.



Improve and simplify your provisional restorations. Get the control, accuracy and results you want. Get Unifast LC.



Unifast™ LC

Light-cured Temporary Acrylic Resin

More Control. Greater Accuracy. Improved Results.

CODE	SHADE	PRODUCT
338006		Unifast LC Introductory Assortment Package Contains: 6 Bottles Powder (30 gm each, Shades A2, A3, B2, B3, C2 and Translucent), 2 Bottles Liquid (15ml each), 2 Rubber Mixing Cups, Liquid Measure, Powder Measure, Spatula and Brush.
338002	Shade A2	Unifast LC 1:2 Package
338003	Shade A3	Contains: 1 Bottle Powder (50 gm of one shade),
338012	Shade B2	2 Bottles Liquid (15 ml), 2 Rubber Mixing Cups,
338013	Shade B3	Liquid Measure, Powder Measure, Spatula.
338021	Translucent	
338022	Shade C2	
338291	Liquid Refill	Unifast LC Liquid Refill Contains: 2 Bottles (15 ml)
338102	Shade A2	Unifast LC Powder Refill
338103	Shade A3	Contains: 50 gm Powder
338112	Shade B2	
338113	Shade B3	
338203	Translucent	
338122	Shade C2	



Advancing the Art and Science of Dentistry

1-800-323-7063
© 1994 GC AMERICA INC., Chicago, IL 60658
Printed in U.S.A.

Unifast™ LC
Light-cured Temporary Acrylic Resin



**Control.
Accuracy.
Results.**

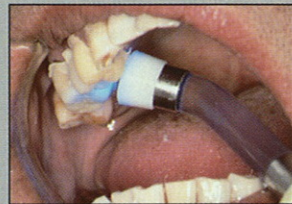
Control. Accuracy. Results.



Take Control.

Unifast LC puts you in control. It's a superior temporary resin material that lets you decide the working time. You can make outstanding provisional restorations with Unifast LC. That's because you have the ability to work as fast or as slow as you want for the accuracy you need.

Unifast LC is the light-cured temporary crown and bridge material that gives you exactly what you must have...Control.



Unifast LC gives you the ability to cure when and where you need it.

Unconditional Working Time.

Unifast LC lets you control the curing time to precisely fabricate, fit and quickly finish a temporary prosthesis. You can cure Unifast LC resin in as little as 20 seconds or you can cure it in stages to match your technique.

Unifast LC chemically cures from a **slurry** to a **dough-like** consistency in about 1.5 minutes*, to a **rubber-like** consistency in approximately 4 - 8 minutes* and can be **light-cured** at any stage to **final hardness**.

*Depends on temperature

Total Accuracy.

Unifast LC makes accurately fitting, esthetically pleasing and highly functional temporary restorations easy. By having the ability to control the curing stages of Unifast LC, it's much easier to vary and adapt your restoration technique to the case.

And, by simply using a standard curing light, you can perform curing of isolated areas as needed. A much more accurate fit can be achieved because curing can be carried out directly in the mouth.

Shade Correct and Characterize with Orbit™ LC.

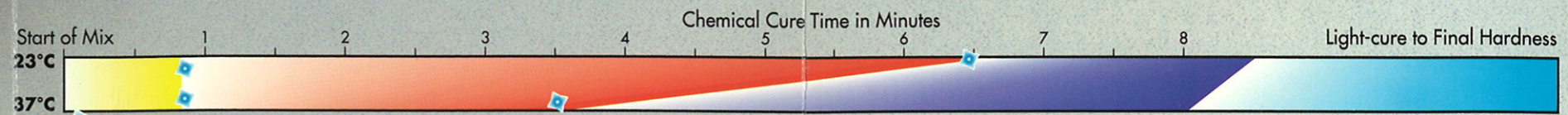
Using Orbit LC, the light-cured staining system from GC America, Unifast LC restorations can be shade corrected and color characterized to precisely match the patient's natural teeth. Simply apply a translucent coat (brush-on technique) of Unifast LC over the temporary restoration to keep the stain in.



Unifast crown stained with Orbit LC

You Control the Curing Stages of Unifast LC

Work as fast or as slow as you want for the accuracy you need.



Light-cure 3-5 seconds at any time to advance to next stage.
Note: Actual irradiation time depends on mixture consistency, temperature and type of light-curing gun used.

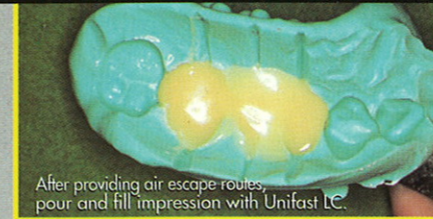
Slurry Stage
up to 40 seconds

Dough-like (plastic) Stage
about 1.5 minutes

Rubber-like (elastic) Stage
about 4 - 8 minutes

Final Cure (light-cure) Stage
20 seconds or more

Crown or Bridge Techniques (Indirect)



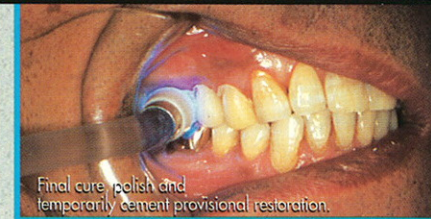
After providing air escape routes, pour and fill impression with Unifast LC.



Re-seat impression over prepared teeth.

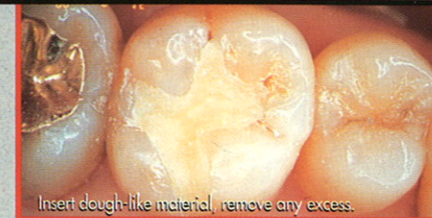


Trim away excess material, flash, undercuts, etc.

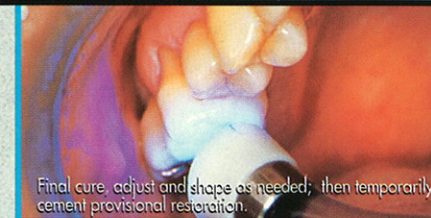


Final cure, polish and temporarily cement provisional restoration.

Inlay or Onlay Techniques (Direct)



Insert dough-like material, remove any excess.



Final cure, adjust and shape as needed; then temporarily cement provisional restoration.

Crown Form Technique



After providing air escape routes, pour and fill suitable crown form with Unifast LC.



Final cure, remove form, polish and temporarily cement crown.

Brush-on Techniques



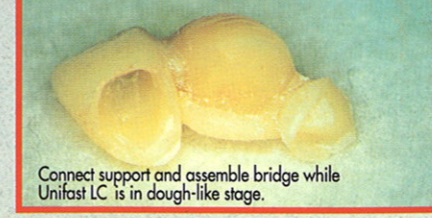
Brush-on in slurry stage to add translucency to incisal edge, lock-in Orbit LC stain, etc.



Light-cure to final hardness. Adheres to other special purpose resins.

Additional Techniques

Use to connect or build-up bridges or other restorations from previously fabricated crowns, pontics, veneers, etc.



Connect support and assemble bridge while Unifast LC is in dough-like stage.



Adjust, shape and polish as needed after curing.