

Technical Manual

Lustre Pastes NF



initia



./GC./



Photoshooting: ZTM Michael Brusch – M.B. Dentaltechnik GmbH, Düsseldorf / Germany
ZTM Oliver Heinzle, Götzis, Austria
CDT Mark Bladen, Worcestershire, United Kingdom

Table of Contents

GC Initial Lustre Pastes NF	4
Indications and Shelf Life	5
Description of the Lustre Pastes NF	6-7
The Liquids of the Lustre Pastes NF Set	8
Firing Chart and CTE	9
Lustre Pastes NF Application	
Basic Colour Combination Chart	10
Basic Step by Step Instruction	11
Advanced Colour Combination Chart	12
Advanced Step by Step Instruction	13
Finishing	14
Facilities of the Lustre Pastes NF	15
Tips and Tricks	16-18
FAQ	19-21

GC Initial Lustre Pastes NF

Colour deepness and lifelike translucency

GC Initial IQ Lustre Pastes NF are 3 - dimensional ceramic stains developed to bring colour deepness and lifelike translucency for the complete GC Initial / Proceed ceramic range. Thanks to their "New Formula" you can now really bring your crowns and bridges to life with this dedicated Lustre Pastes NF Set, with an optimal match to both "low" and "high" CTE ceramics. Available in a ready to use consistency, the Lustre Pastes NF are based on fine ceramic particles and can be applied in a thicker layer where they will exhibit unsurpassed vitality and a very natural glaze to your restorations.

Features

- Just one dedicated kit for all different indications for the complete GC Initial ceramic range.
- The GC Initial IQ Lustre Pastes NF are based on fine ceramic particles, enabling a thicker application compared to conventional stains.
- Improved and unique paste medium, it has a fine thixotropic property for easy and precise applications.
- Available in a ready to use consistency (1 x Neutral, 1 x Value, 4 x Body Shades, 8 x Enamel Effect Shades).
- The high fluorescence of the Lustre Pastes ensure the look of natural teeth.

Indications

The Lustre Pastes NF are a one for all solution for the complete Initial line from GC. Its possible to use the Lustre Pastes NF in a wide CTE – Range between 6,9 and 13,3 in order to work with nearly all types of ceramic. These Lustre Pastes NF represent a modern alternative for conventional staining and glazing, as well as for the colour, brightness, grey value and surface texture corrections of all of your ceramic crowns and bridges. Due to the unique properties it's just a question of minutes to individualize the occlusal surface of your crown and bridge work, to paint on white bands, decalcifications, hair lines and crack lines or to characterize artificial porcelain teeth.

Keep in mind: What you paint (on) is what you get (after firing)

Description of the Lustre Pastes NF

Basic colours for Vitapan Classic ®Shades



L-N Lustre Neutral – neutral and transparent base paste which can be mixed with all Lustre Pastes NF.



L-A Lustre Body A - base colour for all Vita Classic Shades A.



L-B Lustre Body B - base colour for all Vita Classic Shades B.



L-C Lustre Body C - base colour for all Vita Classic Shades C.



L-D Lustre Body D - base colour for all Vita Classic Shades D.

Note: Mix the material well before use.

Description of the Lustre Pastes NF

Effect colours for high esthetic results



L-1 Lustre Enamel Effect
1 – Vanilla – tinted white
to paint on the incisial.



L-2 Lustre Enamel Effect 2
– White – pure white to
paint on white spots or
lucency.



L-3 Lustre Enamel Effect
3 – Light Grey – for
small changing's in the
grey value.



L-4 Lustre Enamel Effect 4
– Dark Grey – for strong
changing's in the grey
value.



L-5 Lustre Enamel Effect
5 – Light Blue – for little
increase of the blue
opalescence.



L-6 Lustre Enamel Effect
6 – Dark Blue – for strong
increase of the blue
opalescence.



L-7 Lustre Enamel Effect
7 – Incisio – for increasing
the transparency.



L-8 Lustre Enamel Effect
8 – Olive – to increase the
green value; can be mixed
with all colours.



L-V Lustre Enamel Effect
9 – Value – to increase the
brightness; the effect can
be reduced with L-N.

The liquids of the Lustre Pastes NF Set



Lustre Paste 'Diluting Liquid':

The 'Diluting Liquid' is a special liquid to change the flowability of the Lustre Pastes. However, it is recommended to obtain a gel/paste like consistency of the Lustre Pastes for best results.

Attention:

-If the Lustre Pastes are too much diluted, the result is a reduction in the gloss of the paste after the firing; hence, the desired result may not be achieved in one glaze firing.

-When needed, dilute the desired amounts of the pastes in a separate plate with Diluting Liquid, never dilute directly in the jars.



Lustre Paste 'Refreshing Liquid':

The 'Refreshing Liquid' is used to preserve the thixotropic property of the pastes. This liquid is used to recover dried out pastes to an optimum, gel like consistency without changing the physical properties. The Refresh Liquid can be used both in the jars and mixed on a separate plate.

Important: Please shake the Refresh Liquid well before use!

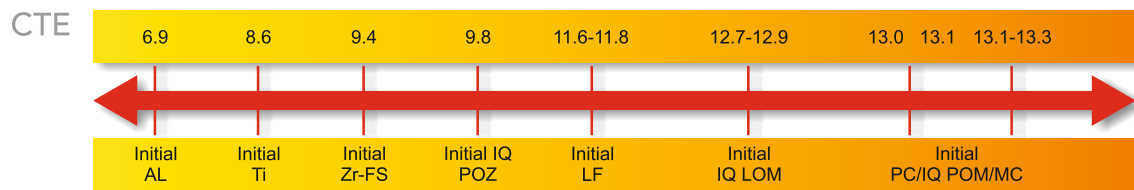
Firing Chart and CTE:

	Preheating Temperature	Drying time	Raise of temperature	Vacuum	Final temperature	Holding time
Proceed MC	480°C	2 min	45°C/min	No	810°C	1 min
GC Initial LF	480°C	2 min	45°C/min	No	760°C	1 min
GC Initial Ti	480°C	2 min	45°C/min	No	770°C	1 min
GC Initial AL*	480°C	2 min	45°C/min	No	810°C	1 min
Proceed Zr	480°C	2 min	45°C/min	No	780°C	1 min
GC Initial PC	480°C	2 min	45°C/min	No	810°C	1 min
GC Initial IQ POM	480°C	2 min	45°C/min	No	810°C	1 min
GC Initial IQ POZ	480°C	2 min <td 45°C/min	No	810°C	1 min	
GC Initial IQ LOM	480°C	2 min	45°C/min	No	810°C	1 min

* Note: Lustre Pastes NF should be applied and fired in 2 thin layers.

The above mentioned firing parameters are only guidelines and therefore always need to be adjusted to the firing furnace and its correct functionality. Most important is to obtain the right firing result. These firing parameters can only be used as guidelines.

Optimal CTE parameters for the GC Initial IQ Lustre Pastes NF



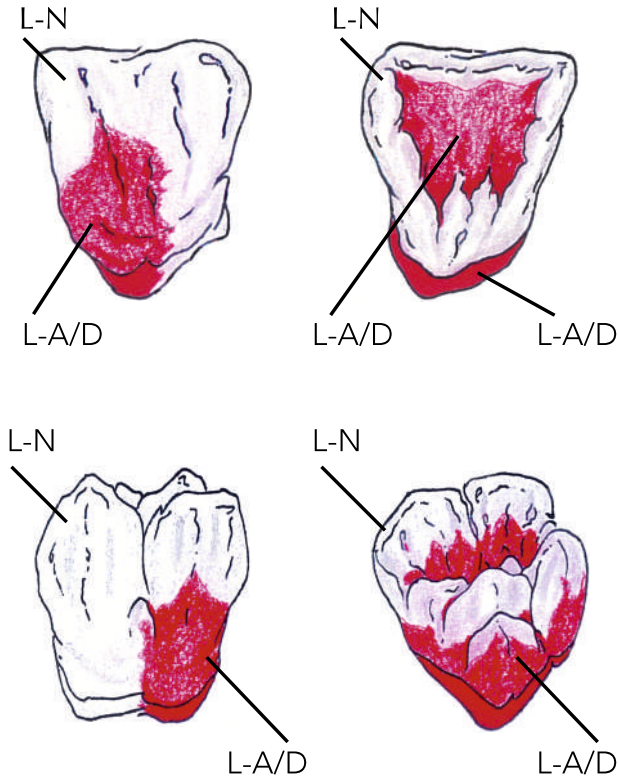
Shelf Life

PRODUCT DESCRIPTION	SHELF LIFE
GC Initial IQ Lustre Pastes NF	5 years
GC Initial IQ Lustre Pastes NF Diluting Liquid	4 years
GC Initial IQ Lustre Pastes NF Refresh Liquid	4 years

*Vita is a registered trademark of Vita Zahnfabrik, Bad Säckingen.

Lustre Pastes NF Application

• Basic Colour Combination Chart



Basic application for Vitapan Classic® Shades

L-N: Lustre Neutral
 L-A/D: Lustre Body A – D

Shades	A1	A2	A3	A3.5	A4	B1	B2	B3	B4	C1	C2	C3	D2	D3	D4
GC Initial IQ Lustre Pastes Neutral	← L-N →														
GC Initial IQ Lustre Pastes Body Shade	← L-A →					← L-B →				← L-C →			← L-D →		

Lustre Pastes NF Application • Basic Step by Step Instruction

Important Information: Please always stir up material well in the jars before use.



Before applying the Lustre Coating, the ceramic restoration is shaped and contoured using adjusted diamond burs. After prepolishing with a ceramic polisher the finished crowns & bridges are sand-blasted with 50 microns Alu-Oxid at 1,5 bar pressure.



The Lustre Paste Neutral is coated on the entire surface of the sandblasted restoration. This coating is clearly thicker than what we know from a normal glaze firing.

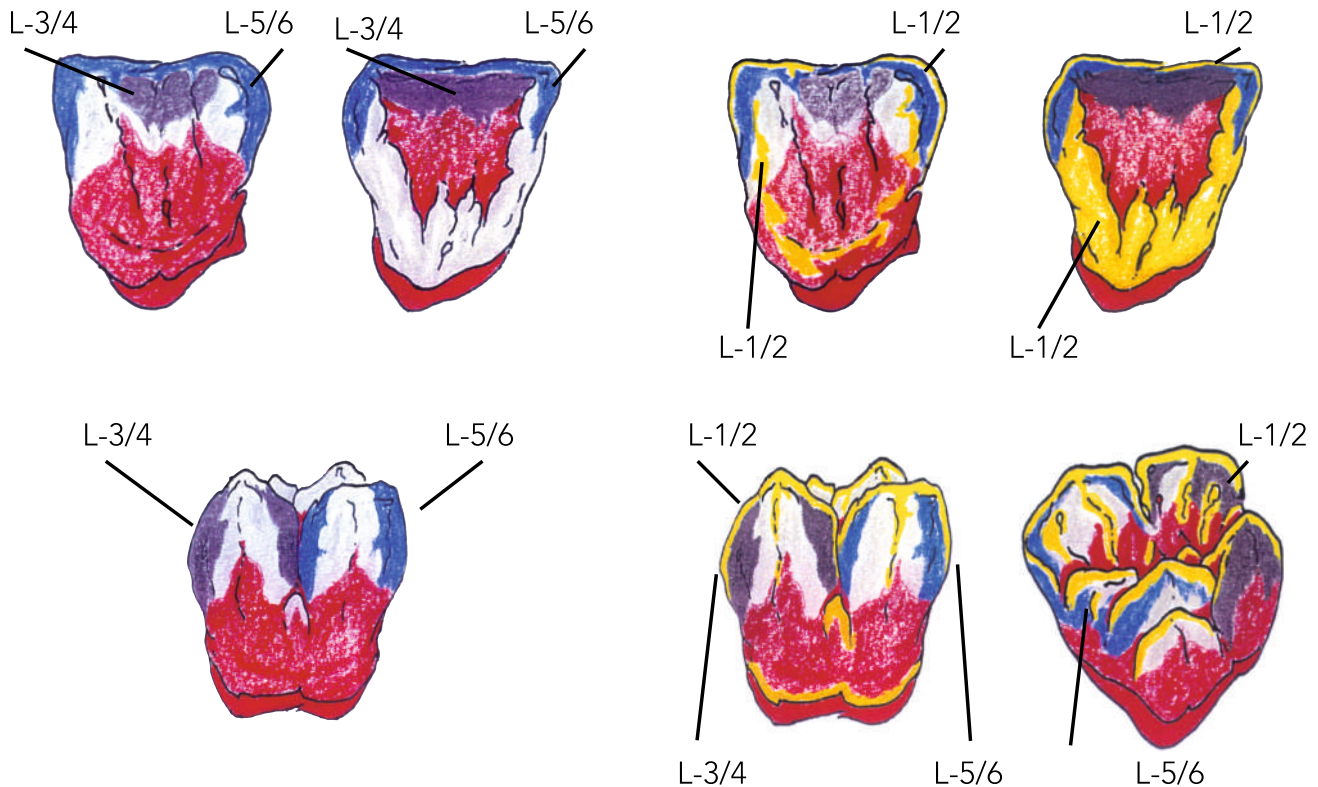
Note: These Lustre Pastes may not come in contact with water.



The requested Vitapan Classic® Shade is created by a more or less intensive application of the Lustre Pastes "Body A - D". This process, which only takes 2 minutes, is everything which is necessary to create Vitapan Classic® shades.



Lustre Pastes NF Application Advanced Colour Combination Chart



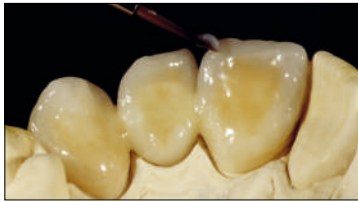
L-1: Lustre Enamel Effect 1 – Vanilla
 L-2: Lustre Enamel Effect 2 – White
 L-3: Lustre Enamel Effect 3 – Light Grey
 L-4: Lustre Enamel Effect 4 – Dark Grey

L-5: Lustre Enamel Effect 5 – Light Blue
 L-6: Lustre Enamel Effect 6 – Dark Blue
 L-7: Lustre Enamel Effect 7 – INcizio
 L-8: Lustre Enamel Effect 8 – Olive
 L-9: Lustre Enamel Effect 9 – Value

Lustre Pastes NF Application

Advanced Step by Step Instruction

To build up a high aesthetic solution for the patient use our advanced step by step instruction:



In order to achieve the higher grey value of the incisal area with darker teeth (A3.5; A4; C3; C4), 2 grey Effect Shades can be used: L-3 (Light Grey) and L-4 (Dark Grey).



For eventual further individualisation, you can use the whitish Lustre Pastes NF: L-1 (Vanilla) and L-2 (White) and L-V (Value) for brightening the restorations.



2 bluish Effect Lustre Pastes NF: L-5 (Light Blue) and L-6 (Dark Blue) for a bluish opalescent appearance in the incisal area. Greenish Effect Lustre Paste NF: L-8 (Olive) for a greenish effect. Can be mixed with all Lustre Pastes NF.



In order to achieve an even higher „Transparency“ the 2 greyish Effect Lustre Pastes NF L-3/L-4 can be used as well.

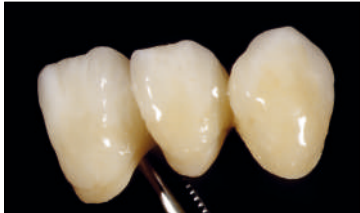


Lustre Pastes NF Application • Finishing

No matter if you choose the basic way or the advanced way for high esthetic results the steps to finalize your work are still the same.



The requested surface texture / smoothness of the Lustre Paste layer can be obtained by soft vibrating or condensing the restoration.



Final result after 1 firing.

Tips and Tricks

Additional changing's in colour, transparency and brightness of crown and bridge work can be done smoothly with the Lustre Pastes. The unique consistency ensures homogenous modifications and appearance.



Basis



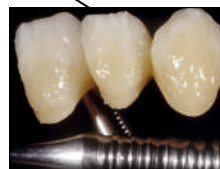
LP Neutral



Brightness



Colour



LP Value, L-3, L-A



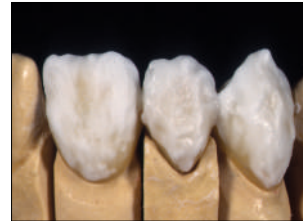
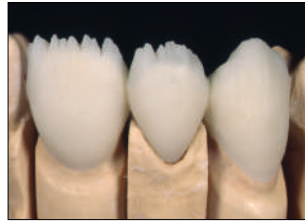
Grey Value

Use the Lustre Pastes to inhibit the depth effects and the transparency of your crown and bridge work build in the layering technique. Sandblast your restoration with 50 micron Aluminum-oxide, damp it and then paint it on with Lustre Paste L-N.

Make your corrections with the effect colours of the Lustre Paste Set. Increase brightness > LP Value
Increase colour saturation > L A-D
Increase grey value > L 3/4

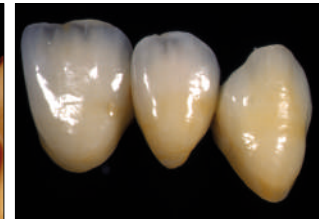
The requested surface texture/ smoothness of the Lustre Pastes layer can be obtained by soft vibrating or condensing the restoration.

Cut Back Technique modified with Initial CL-F



The restorations layered or pressed in the One Body method can be easily reduced with appropriated abrasive wheels and discs. The finishing can be done with different ceramics of the Initial Family

The coloured, overburned dentin body is first fully covered with CL-F (MC or Zr) and then layered with Opal/Incisal masses on the final shape of the tooth. (See also Proceed Manual)



The high transparency of Initial IQ Press Over/ Layering Over ceramics requires an additional hromatisation of the remaining dentin body before you start the finishing. Therefore apply the required Luster Pastes NF colours.

The finished with the Initial Luster Pastes NF glaze fired crowns ...

... are indistinguishable from, polychrome layered restorations.

GC Initial Lustre Pastes NF Gum Shade Set

Product Code: 877088



Contents:

1 x Base Light,
1 x Base Dark,
1 x Intensive Violet,
1 x Intensive Red,
1 x Intensive Cream
4 x Modifiers,
1 x Diluting Liquid,
1 x Refresh Liquid,
1 x Mixing Dish,
2 x Brushes,
1 x Picture IFU

GC Initial Lustre Pastes NF V Shade Set

Product Code: 877078



Contents:

1 x Neutral,
1 x Value,
4 x Body Shades,
8 x Enamel Effect Shades,
1 x Diluting Liquid,
1 x Refresh Liquid,
1 x Mixing Dish,
2 x Brushes,
1 x Picture IFU



GC India Dental Pvt. Ltd.

Plot No. 233, Phase III, IDA Pashamylaram,
Pattancheru Mandal, Sangareddy District - TS 502 307
Tel.: +91 8455 224 844

Email: info.gcindia@gc.dental

Website: www.gcindiadental.com

Connect us on:



<https://www.facebook.com/GcIndiaDental1>



<https://www.youtube.com/channel/UCyvajHQBoaSk2tHEgC-KLw>



<http://www.linkedin.com/in/gcindiadental/>



<https://www.instagram.com/gcindiadental/>