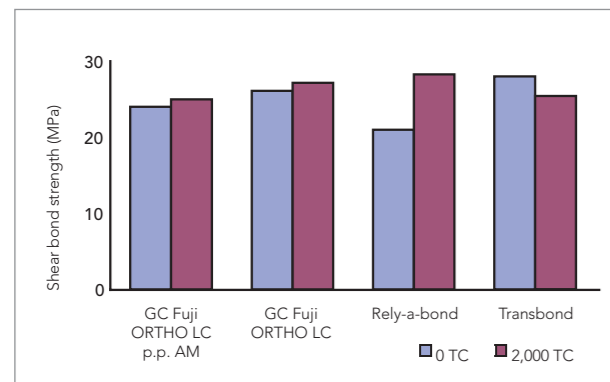


# Easy OFF

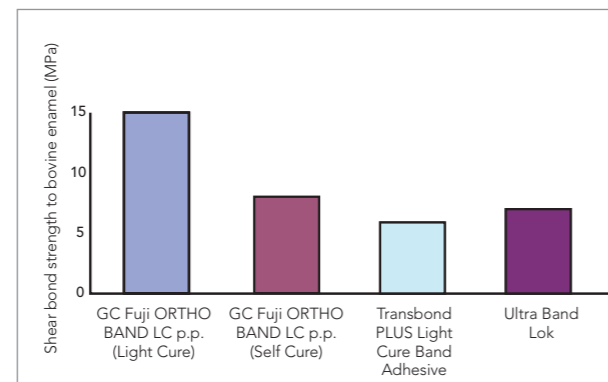
## Superior removal

The bond strength is well balanced to retain brackets, bands and appliances throughout treatment but to avoid damaging the enamel when removing the appliances. The naturally moist oral environment also helps to maintain its adhesive strength, ensuring they are attached securely throughout the duration of placement.

Bracket bond strength



Band bond strength



GC R&D Internal Data, Japan

## Superior result

Immediately after debanding brackets with GC Fuji ORTHO LC



Sustained fluoride release helps protect enamel

Immediately after debanding brackets bonded with resin cement



Insufficient fluoride protection to prevent white spots

# The GC Fuji ORTHO family

## Self-curing



### Fuji ORTHO

**Powder/Liquid**  
Intro Pack:  
40 g powder, 2 x 6.8 ml liquid  
Refill:  
40 g powder, 6.8 ml liquid



### Fuji ORTHO Band Paste Pak

Refill:  
2 x 13.3 g, 7.2 ml  
Paste Pak cartridge  
with mixing pad

## Light-curing



### Fuji ORTHO LC

**Powder/Liquid**  
Intro Pack:  
15 g powder, 6.8 ml liquid  
Refill:  
40 g powder, 6.8 ml liquid  
**Capsules**  
50 capsules  
(mixed volume per capsule 0.10 ml)



### Fuji ORTHO LC Paste Pak Automix

Refill:  
2 x 13.3 g, 7.2 ml Paste Pak cartridge  
Starter Set:  
1 x 13.3 g, 7.2 ml Paste Pak cartridge,  
20 x mixing tip LC,  
2 x ORTHO Gel Conditioner,  
15 brush tips



### Fuji ORTHO Band LC Paste Pak Automix

Refill:  
2 x 12.9 g, 7.2 ml  
Paste Pak cartridge  
with mixing pad

## Related products



Paste Pak Dispenser



Capsule Applier



GC ORTHO Conditioner



GC ORTHO Gel Conditioner



GC Mixing tips LC

**GC EUROPE N.V.**  
Head Office  
Researchpark  
Haasrode-Leuven 1240  
B - 3001 Leuven  
Tel. +32.16.74.10.00  
Fax. +32.16.40.48.32  
info@gceurope.com  
http://www.gceurope.com

**GC UNITED KINGDOM Ltd.**  
12-15 Coopers Court  
Newport Pagnell  
UK - Bucks. MK16 8JS  
Tel. +44.1908.218.999  
Fax. +49.1908.218.900  
info@uk.gceurope.com  
http://uk.gceurope.com



Easy ON – Easy OFF  
Orthodontic luting  
made easy by GC.



**Fuji ORTHO**  
from GC.

Combining fluoride release and easy handling with an optimal bond strength required for orthodontics. GC Fuji ORTHO family - superior solutions for superior results, peace of mind and satisfied patients.



z L L F EN 2 42 04/12

# Easy ON

GC Fuji ORTHO resin modified glass ionomers offer **superior result** thanks to its **simple placement procedure, fluoride protection** and **trouble-free removal** of brackets and bands on completion of treatment.

## Superior placement

The 'easy on' procedure of the Fuji ORTHO family range is guaranteed as there is no need for acid etching and no need trying to maintain a dry field. These properties ensure that the clinician does not waste time or material during the orthodontic treatment.

Step by step



Place the coated bracket on the tooth but do not desiccate the tooth surface.



Tack cure the bracket for 5 seconds and remove the excess with a scaler.



Finally light cure the material 20 seconds for each aspect.

Dr. A. Komori, Japan

## Superior protection

As there is no need for etching, the teeth do not get damaged during preparation. For extra protection and bonding strength, use the ORTHO gel conditioner for 10 seconds to gently condition the enamel.

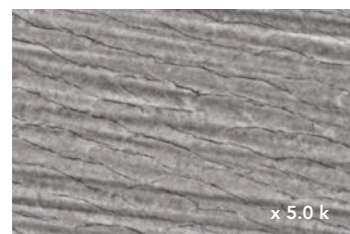


Clean and polish the tooth surface thoroughly

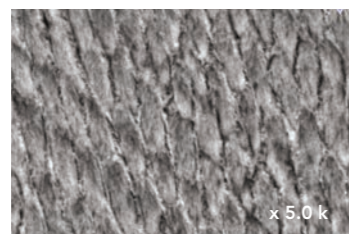


Apply Fuji ORTHO Gel Conditioner

Dr. A. Komori, Japan



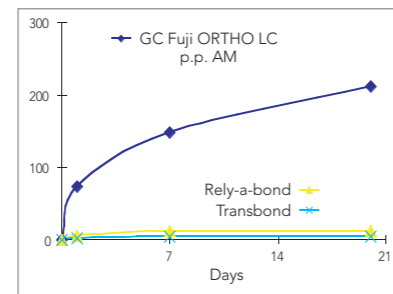
Gentle conditioning with ORTHO Gel Conditioner



Enamel structure after acid etching

GC R&D Internal Data, Japan

Fluoride release



GC R&D Internal Data, Japan

The sustained and rechargeable fluoride release inherent to glass ionomers helps protect the enamel adjacent to orthodontic brackets and bands by creating a zone of inhibition. **This reduces the risk of white spots occurring during orthodontic treatment.**

Features & Benefits	Self-curing		Light-curing			
	Powder / Liquid	Capsules	Paste / Paste			
<b>Powder / Liquid</b> The most economical delivery form Flexibility in the delivery of the total needed quantity	Fuji ORTHO Powder / Liquid			Fuji ORTHO LC Powder / Liquid		
<b>Capsules</b> Fast and easy direct application Delivers just the right amount of material in their correct ratios				Fuji ORTHO LC Capsule		
<b>Paste / Paste</b> Easy to dispense with free choice between Automix or handmix without air bubbles Free choice of quantity, but always in their correct ratios		Fuji ORTHO Band Paste Pak			Fuji ORTHO LC Paste Pak Automix	Fuji ORTHO Band LC Paste Pak Automix
<b>Mixing time</b>	30"	15"	30"	10"	None	15" / none
<b>Working time</b>	2'50"	3'30"	3'15"	3'00"	5'00"	3'30"
<b>Setting time</b>	3'00"	3'00"	20"	20"	20"	20"
<b>Film thickness</b>	23 μ	3 μ	24 μ	30 μ	18 μ	3 μ

