



GC America  
PRODUCTS FOR  
CAD/CAM  
TECHNOLOGY

*'GC'*

The background features a dark field with vibrant, glowing lines in shades of purple, blue, and yellow. A grid of white lines is visible in the upper left quadrant, creating a sense of depth and perspective.

# INTRODUCTION

GC America Inc. is dedicated to providing dental professionals with the most cutting edge, high quality products in the market. CAD/CAM and milling technologies are rapidly changing and there is an increased demand for such a type of technology in the dental industry. The following featured products are ideal for such technologies. From revolutionary new ceramic pastes that add dimension to monolithic milled ceramic crowns, to ideal cements, GC America offers a range of products and services that will perfect the new technologies of today.

# TESTIMONIALS

*"I have been using the GC Initial™ IQ Lustre Pastes NF set for a few years now for my CEREC®† crowns and I really like it! The color palette is excellent and gives you a wide variety of options to match teeth. The materials really stay where you place them, so it is easy to characterize with. It has been a very nice addition to my CEREC®† stain and glaze armamentarium."*

**- Dr. Rich Rosenblatt**

*"I was shocked at what I could create with GC Initial™ IQ Lustre Pastes NF. This product has made stain and glaze a true art form!"*

**- Joshua Polansky, Niche Dental Studio, Cherry Hill, NJ**

*"The new GC Initial™ IQ Lustre Pastes NF is one of the best dental materials created in the last 10 years. The original version was very nice, but now that it can be used on any ceramic regardless of the CTE's and is dispensed in a jar to increase efficiency, it is a true winner and a "must have" for every lab."*

**- Albert Tassi, CDT, Albert Tassi Dental Studio, Elmhurst, IL**

*"If you are not using GC FUJIROCK® EP OptiXscan, what are you waiting for? This is by far the greatest die stone for scanning in the world! Low expansion, high strength and perfect detail. What more can you ask for?"*

**- Luke Kahng, CDT, LSK121 Oral Prosthetics, Naperville, IL**

*"GC FUJIROCK® EP OptiXscan is by far the best scannable die stone on the planet! It has perfect physical properties with low expansion and high compressive strength. The detail we get from GC FUJIROCK® EP OptiXscan is unsurpassed. We have tried many different scannable die stones in the past but have not found a single type 4 stone of this quality."*

**- Iliya Stein, Creative Dental Ceramics, Des Plaines, IL**





# GC Initial™ IQ Lustre Pastes NF

*GC Initial IQ Lustre Pastes NF are 3-dimensional ceramic pastes developed to bring color depth and lifelike translucency for the complete GC Initial ceramic range. Thanks to their “New Formula” you can now really bring your crowns and bridges to life.*

GC Initial IQ Lustre Pastes NF are an optimal match to both “low” and “high” CTE ceramics and are available in a ready to use consistency. GC Initial IQ Lustre Pastes NF are based on fine ceramic particles and can be applied in a thicker layer where they will exhibit unsurpassed vitality and add a very natural glaze to your restorations.

The GC Initial IQ Lustre Pastes NF are a one-for-all solution for the complete GC Initial line. It is possible to use the GC Initial IQ Lustre Pastes NF in a wide CTE range between 6.9 and 13.3 in order to work with nearly all types of ceramic. These GC Initial IQ Lustre Pastes NF represent a modern alternative for conventional staining and glazing, as well as for the color, brightness, grey value and surface texture corrections of all of your ceramic crowns and bridges. Due to its unique properties, it takes a matter of minutes to individualize the surfaces of your crown and bridge work - to paint on white bands, decalcifications, hair lines and crack lines or to characterize your restorations.

# GC Initial™ IQ Lustre Pastes NF

*With our new paste technology, take your milled restorations, without a glaze or stain, to a whole new level.*

The totally new technologies of the GC Initial IQ 3-dimensional Lustre Pastes NF now allow you to take your milled restorations to another level of beauty and quality. These newly designed pastes allow you to color, characterize and glaze your milled restorations in ONE FIRING! GC Initial IQ Lustre Pastes NF will allow you to achieve a 3-dimensional looking restoration in one easy step that looks like it took hours to stack by a ceramist.

- Easy as painting by numbers
- Consistent predictable results
- While other manufacturers offer a stain/glaze material, GC Initial IQ Lustre Pastes NF are totally new 3-dimensional ceramic pastes, which exhibit unrivaled vitality, depth and lustre in one firing



**FIRING TEMPERATURES**  
Preheating Temp: .....480°C  
Drying Time: .....2:00 min  
Raise of Temp: .....45°C/min  
Vacuum: .....No  
Final Temp: .....790°C  
Holding Time: .....1:00 min  
(for a higher glaze 2:00min)



Monochromatic Restoration



Finished Restoration After GC Initial IQ Lustre Pastes NF Application

# GC Initial™ IQ Lustre Pastes NF

*What is so different? GC Initial IQ Lustre Pastes NF achieve superior aesthetics and save time in one firing!*

## *Traditional Stains/Glazes*

**-VS-**

## *GC Initial IQ Lustre Pastes NF*

<ul style="list-style-type: none"><li>• Most stains and glazes on the market contain oxides that block light</li></ul>	<ul style="list-style-type: none"><li>• GC Initial IQ Lustre Pastes NF are a unique new ceramic paste that allows light to pass through the restoration</li></ul>
<ul style="list-style-type: none"><li>• Stains and glazes do not allow you to add morphology, texture, or contacts</li></ul>	<ul style="list-style-type: none"><li>• GC Initial IQ Lustre Pastes NF allow you to add texture, morphology and contact by simply controlling the consistency with diluting liquid</li></ul>
<ul style="list-style-type: none"><li>• Stains and glazes only adhere to the surface of the ceramic and can wear</li></ul>	<ul style="list-style-type: none"><li>• Because GC Initial IQ Lustre Pastes NF are indeed a ceramic paste, they fluoresce naturally</li></ul>
<ul style="list-style-type: none"><li>• Most stains and glazes must be fired more than once</li></ul>	<ul style="list-style-type: none"><li>• GC Initial IQ Lustre Pastes NF are a low fusing ceramic paste that infuses itself into the restoration</li></ul>
<ul style="list-style-type: none"><li>• Most conventional stains and glazes do not fluoresce at all</li></ul>	<ul style="list-style-type: none"><li>• GC Initial IQ Lustre Pastes NF - ONE FIRING!</li></ul>
<ul style="list-style-type: none"><li>• Stains and glazes cannot be layered and are not stable</li></ul>	<ul style="list-style-type: none"><li>• GC Initial IQ Lustre Pastes NF are thixotropic and when left thick can be layered like a ceramic</li></ul>



*Here's the difference!*



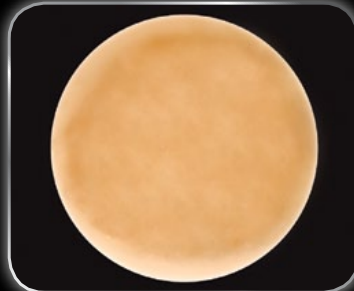
*Polished milled restoration.*



*Polished milled restoration applied with GC Initial IQ Lustre Paste NF.*



*Stain does not allow light penetration<sup>1</sup>.*



*GC Initial IQ Lustre Pastes NF allow light to pass through<sup>1</sup>.*

## Competitive Fluorescence Comparison<sup>2</sup>



GC Initial IQ  
Lustre Pastes NF



Stain "A"



Stain "B"



Stain "C"



<sup>1</sup> internal test conducted with a lightbox

<sup>2</sup> internal test conducted with a blacklight

# GC Initial™ IQ Lustre Pastes NF

## TECHNIQUE GUIDE



Before GC Initial IQ Lustre Pastes NF application, the restorations should be contoured and adjusted using diamond burs. The finished restoration should be sandblasted with 50 microns aluoxid at 1.5 bar pressure. Note: cleaning surface with alcohol is acceptable.



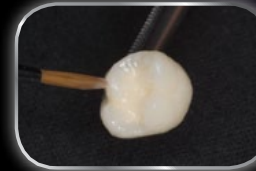
Dispense desired Lustre Pastes into palette. Note: L-N (GC Initial IQ Lustre Pastes NF Neutral) should fully cover every restoration.



Use diluting liquid to dilute the thick consistency of the GC Initial IQ Lustre Pastes NF. GC Initial IQ Lustre Pastes NF should have a creamy consistency.



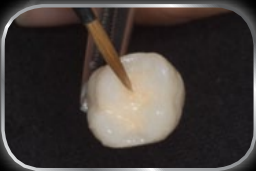
The GC Initial IQ Lustre Pastes NF Neutral (L-N) is coated on the entire surface of the restoration.



The GC Initial IQ Lustre Pastes NF Neutral (L-N) coating should be applied slightly thicker than what we know of a normal glaze firing. Note: GC Initial IQ Lustre Pastes NF should not come in contact with water.



Vitapan® Classic Shades can be created by a more or less intensive application of the GC Initial IQ Lustre Pastes NF(L-A through L-D).



GC Initial IQ Lustre Pastes NF Body (L-A through L-D) can be added to the gingival and occlusal for more chroma and characterization.



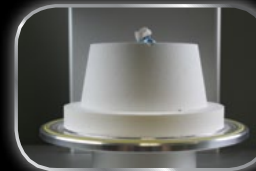
For even further individualization, you can use the 2 whitish GC Initial IQ Lustre Pastes NF, Vanilla (L-1) and White (L-2), for brightening restorations and cusp tips.



Bluish Effect GC Initial IQ Lustre Pastes NF (L-5 or L-6) can be added for a bluish opalescence while Greyish Effect GC Initial IQ Lustre Pastes NF (L-3 or L-4) can be used for a high transparency.



Surface texture or smoothness of the GC Initial IQ Lustre Pastes NF can be obtained by softly vibrating the restoration.



Set restoration in oven and fire according to firing instructions (see reverse side).

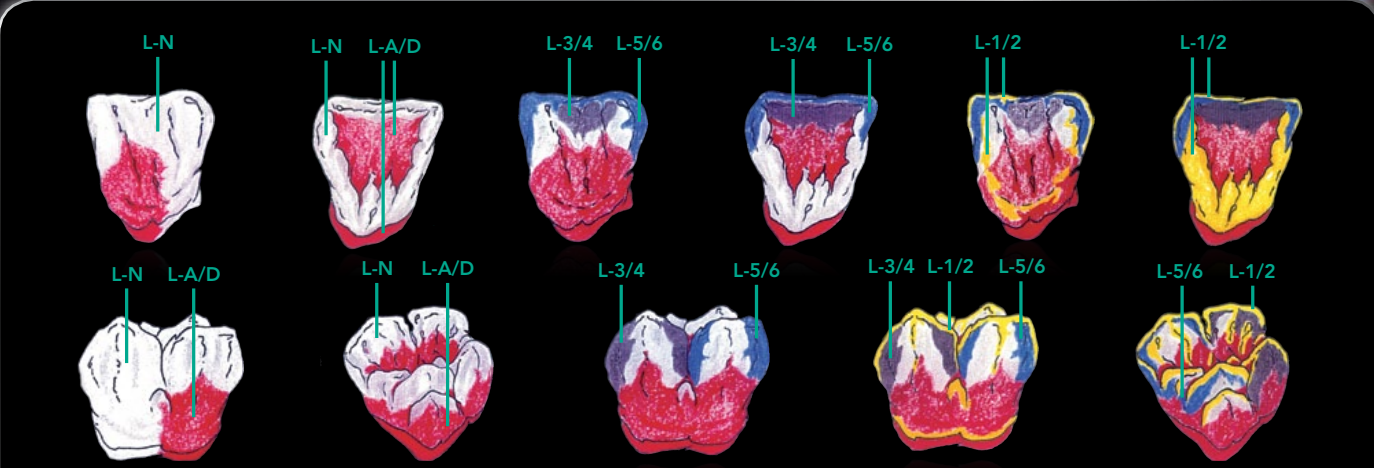


Final restoration.



## FIRING TEMPERATURES

Preheating Temp: . . . . . 480°C  
Drying Time: . . . . . 2:00 min  
Raise of Temp: . . . . . 45°C/min  
Vacuum: . . . . . No  
Final Temp: . . . . . 790°C  
Holding Time: . . . . . 1:00 min  
(for a higher glaze 2:00min)



## FIT CHECKER

SILICONE FOR REVEALING HIGH SPOTS AND PRESSURE POINTS  
SILIKON FÖR LOKALISERING AV TRYCKSTÄLLER OCH HÖGTRYCKSPUNKTER  
SILICONE DE DETECTION DES POINTS DE SURPRESSION  
SILICONE PER LA RILEVAZIONE DELLA PRESSIONE E DEI PUNTI DI  
PRESSIONE  
SILICONA PARA RELEVANA ZONAS Y PUNTOS DE ALTA PRESION  
SILICONE VOOR HET OPSPOREN VAN ONVOLKOMENHEDEN EN  
DRUKPLAATSEN  
SILIKONE TIL LOKALISERING AF TRYKSTEDER OG DÅRLIG PASFORM  
SILIKON FOR UPPTÄCK AV TRYCKSTÄLLER SAMT KONTROLL AV PASSFORM

WHITE

GC

GC CORPORATION  
TOKYO, JAPAN

### FIT CHECKER

SILICONE FOR REVEALING HIGH SPOTS AND PRESSURE POINTS  
SILIKON FÖR LOKALISERING AV TRYCKSTÄLLER OCH HÖGTRYCKSPUNKTER  
SILICONE DE DETECTION DES POINTS DE SURPRESSION  
SILICONE PER LA RILEVAZIONE DELLA PRESSIONE E DEI PUNTI DI  
PRESSIONE  
SILICONA PARA RELEVANA ZONAS Y PUNTOS DE ALTA PRESION  
SILICONE VOOR HET OPSPOREN VAN ONVOLKOMENHEDEN EN  
DRUKPLAATSEN  
SILIKONE TIL LOKALISERING AF TRYKSTEDER OG DÅRLIG PASFORM  
SILIKON FOR UPPTÄCK AV TRYCKSTÄLLER SAMT KONTROLL AV PASSFORM

1-1PKG

### FIT CHECKER

SILICONE FOR REVEALING HIGH SPOTS AND PRESSURE POINTS  
SILIKON FÖR LOKALISERING AV TRYCKSTÄLLER OCH HÖGTRYCKSPUNKTER  
SILICONE DE DETECTION DES POINTS DE SURPRESSION  
SILICONE PER LA RILEVAZIONE DELLA PRESSIONE E DEI PUNTI DI  
PRESSIONE  
SILICONA PARA RELEVANA ZONAS Y PUNTOS DE ALTA PRESION  
SILICONE VOOR HET OPSPOREN VAN ONVOLKOMENHEDEN EN  
DRUKPLAATSEN  
SILIKONE TIL LOKALISERING AF TRYKSTEDER OG DÅRLIG PASFORM  
SILIKON FOR UPPTÄCK AV TRYCKSTÄLLER SAMT KONTROLL AV PASSFORM

BASE

WHITE

NET WT. 80g (2.8oz)

### FIT CHECKER

SILICONE FOR REVEALING HIGH SPOTS AND PRESSURE POINTS  
SILIKON FÖR LOKALISERING AV TRYCKSTÄLLER OCH HÖGTRYCKSPUNKTER  
SILICONE DE DETECTION DES POINTS DE SURPRESSION  
SILICONE PER LA RILEVAZIONE DELLA PRESSIONE E DEI PUNTI DI  
PRESSIONE  
SILICONA PARA RELEVANA ZONAS Y PUNTOS DE ALTA PRESION  
SILICONE VOOR HET OPSPOREN VAN ONVOLKOMENHEDEN EN  
DRUKPLAATSEN  
SILIKONE TIL LOKALISERING AF TRYKSTEDER OG DÅRLIG PASFORM  
SILIKON FOR UPPTÄCK AV TRYCKSTÄLLER SAMT KONTROLL AV PASSFORM

CATALYST

WHITE

NET WT. 30g (1.1oz)

## FIT CHECKER

SILICONE FOR REVEALING HIGH SPOTS AND PRESSURE POINTS  
SILIKON FÖR LOKALISERING AV TRYCKSTÄLLER OCH HÖGTRYCKSPUNKTER  
SILICONE DE DETECTION DES POINTS DE SURPRESSION  
SILICONE PER LA RILEVAZIONE DELLA PRESSIONE E DEI PUNTI DI  
PRESSIONE  
SILICONA PARA RELEVANA ZONAS Y PUNTOS DE ALTA PRESION  
SILICONE VOOR HET OPSPOREN VAN ONVOLKOMENHEDEN EN  
DRUKPLAATSEN  
SILIKONE TIL LOKALISERING AF TRYKSTEDER OG DÅRLIG PASFORM  
SILIKON FOR UPPTÄCK AV TRYCKSTÄLLER SAMT KONTROLL AV PASSFORM

BLACK

GC

GC CORPORATION  
TOKYO, JAPAN

### FIT CHECKER

SILICONE FOR REVEALING HIGH SPOTS AND PRESSURE POINTS  
SILIKON FÖR LOKALISERING AV TRYCKSTÄLLER OCH HÖGTRYCKSPUNKTER  
SILICONE DE DETECTION DES POINTS DE SURPRESSION  
SILICONE PER LA RILEVAZIONE DELLA PRESSIONE E DEI PUNTI DI  
PRESSIONE  
SILICONA PARA RELEVANA ZONAS Y PUNTOS DE ALTA PRESION  
SILICONE VOOR HET OPSPOREN VAN ONVOLKOMENHEDEN EN  
DRUKPLAATSEN  
SILIKONE TIL LOKALISERING AF TRYKSTEDER OG DÅRLIG PASFORM  
SILIKON FOR UPPTÄCK AV TRYCKSTÄLLER SAMT KONTROLL AV PASSFORM

1-1PKG

### FIT CHECKER

SILICONE FOR REVEALING HIGH SPOTS AND PRESSURE POINTS  
SILIKON FÖR LOKALISERING AV TRYCKSTÄLLER OCH HÖGTRYCKSPUNKTER  
SILICONE DE DETECTION DES POINTS DE SURPRESSION  
SILICONE PER LA RILEVAZIONE DELLA PRESSIONE E DEI PUNTI DI  
PRESSIONE  
SILICONA PARA RELEVANA ZONAS Y PUNTOS DE ALTA PRESION  
SILICONE VOOR HET OPSPOREN VAN ONVOLKOMENHEDEN EN  
DRUKPLAATSEN  
SILIKONE TIL LOKALISERING AF TRYKSTEDER OG DÅRLIG PASFORM  
SILIKON FOR UPPTÄCK AV TRYCKSTÄLLER SAMT KONTROLL AV PASSFORM

BASE

BLACK

NET WT. 80g (2.8oz)

### FIT CHECKER

SILICONE FOR REVEALING HIGH SPOTS AND PRESSURE POINTS  
SILIKON FÖR LOKALISERING AV TRYCKSTÄLLER OCH HÖGTRYCKSPUNKTER  
SILICONE DE DETECTION DES POINTS DE SURPRESSION  
SILICONE PER LA RILEVAZIONE DELLA PRESSIONE E DEI PUNTI DI  
PRESSIONE  
SILICONA PARA RELEVANA ZONAS Y PUNTOS DE ALTA PRESION  
SILICONE VOOR HET OPSPOREN VAN ONVOLKOMENHEDEN EN  
DRUKPLAATSEN  
SILIKONE TIL LOKALISERING AF TRYKSTEDER OG DÅRLIG PASFORM  
SILIKON FOR UPPTÄCK AV TRYCKSTÄLLER SAMT KONTROLL AV PASSFORM

CATALYST

BLACK

NET WT. 30g (1.1oz)





# FIT CHECKER™

*Odorless, tasteless silicone material that forms a tough, micro thin film to allow detection of high spots and pressure points.*

- Fast-setting and easy-to-use, FIT CHECKER peels away to leave a clean, residue-free fitting surface
- FIT CHECKER black is ideal for use with all ceramic restorations
- Clearly identifies issues of seating all ceramic restorations (black)
- Easy to clean-up, resulting in achievable high internal bond strengths to ceramic restoration





# FIT CHECKER™ II

*FIT CHECKER II is a white colored, odorless, tasteless VPS indicator material that forms a 3-dimensional representation of any high spots or pressure points in various dental prosthesis: dentures, crowns and/or bridges.*

- Vinyl Polysiloxane - not affected by saliva
- White in color - excellent detail and accuracy
- 3-dimensional record of prosthesis fit
- Enough working time for full dentures
- Flows well when seating denture



G-CEM CAPSULE  
SELF-ADHESIVE LUTING CEMENT IN CAPSULES  
50 CAPSULES

GC CORPORATION  
TOKYO, JAPAN

G-CEM Automix  
SELF-ADHESIVE LUTING CEMENT  
4.8g (2.7mL) SYRINGE x2

GC CORPORATION  
TOKYO, JAPAN

G-CEM Automix  
SELF-ADHESIVE LUTING CEMENT  
A2 4.8g(2.7mL)

G-CEM Automix  
SELF-ADHESIVE LUTING CEMENT  
A2 4.8g(2.7mL)

G-CEM CAPSULE  
A03

G-CEM CAPSULE  
A03



# G-CEM™ & G-CEM™ Automix

*Self-adhesive resin cement features an advanced formulation that offers unparalleled self-adhesive properties that seal and protect the tooth while eliminating sensitivity, whether the prep is moist or dry. This natural complement to the tooth surface means you will be able to quickly and efficiently handle a variety of restorations with far better results: generating more satisfied patients in the process.*

## THE RIGHT MIX FOR LONG-LASTING RESTORATIONS

- Easy to use
- Strong
- Versatile
- Two delivery options, one powerful restoration solution
- Made by the world leader in dental cements
- Available in two delivery forms
- Low film thickness to guarantee intimate fit of all ceramic restorations
- Highest level of fluoride output in all resin cement systems



# GC METAL STRIPS

*Ideal for trimming and finishing interproximal surfaces (composite, glass ionomer or metal restorations) since they will not stretch or break. The excellent wear resistance and superior abrasive bonding allow wet finishing and assure long-lasting and repeated use.*

- Sterilizable/autoclavable
- Color-coded (4 grits)
- Coarse, Medium, Fine and Extra Fine
- 3 widths
- 2.6mm, 3.3mm, and 4.0mm
- Ability to lighten contacts during cementation if necessary
- Improves marginal adaptation of restoration if needed

# CERAMIC PRIMER

PRIMER FOR CERAMIC BONDING  
PRIMER FÜR KERAMIK  
PRIMER POUR CERAMIQUE  
PRIMER PER BONDING-CERAMICA  
CEBADOR PARA UNION A CERAMICA  
PRIMER VOOR HET HECHTEN VAN KERAMIEK  
PRIMER TIL BONDING AF KERAMIK  
PRIMER FOR BONDING AV KERAMIK

A 2mL / B 2mL

**FLAMMABLE**

STORAGE  
STORE IN A COOL AND  
DARK PLACE.  
(1~28°C) (33.8~82.4°F)

Caution : U.S. Federal Law restricts  
this device to sale by or  
on the order of a dentist.

**GC**

GC CORPORATION  
TOKYO, JAPAN



# GC CERAMIC PRIMER

*A priming agent designed to firmly bond ceramic prostheses to tooth structure using resin adhesive cement as well as to bond laboratory resins, composites and acrylics to ceramic surfaces.*

- The only two bottle system on the market to enhance physical properties and extend life of product
- Increases bond strength to internal substrate of an all ceramic restoration



## EXABITE™ II NDS

VINYL POLYSILOXANE BITE REGISTRATION CREME  
VINYL-POLYSILOXAN BISSREGISTRERPAST  
PÂTE VINYL POLYSILOXANE POUR ENREGISTREMENT  
DE L'OCCLUSION  
CREMA DE VINIL POLISILOXANO PARA REGISTRO DE MORIDA  
CREMA AL VINIL POLISILLOSANO PER LA REGISTRAZIONE DEL MORSO  
VINYL-POLYSILOXAN BEET REGISTRATIE MATERIAAL  
IL SILIKONE BIDREGISTRERINGSMATERIAAL  
IL SILIKONMATERIAL FOR BETTREGISTRENING  
VINIL POLILOXANO FLÚIDO PARA REGISTRO DE MORIDA

2X48ml Cartridges, 12 Mixing Tips  
Store at room temperature  
(74°F/23°C, 50±10% Relative Humidity)

**GC**  
GC AMERICA INC.  
ALSIIP, ILLINOIS 60803





# EXABITE™ II

*Developed especially for occlusal registration, EXABITE II is an improved addition reaction vinyl polysiloxane impression material that has significant handling and accuracy advances, extrudes easier, and sets hard, very quickly.*

- Improved bite registration crème offers higher strength and hardness
- New faster formulation sets in 45 seconds or less
- Ideal stiffness and minimal distortion
- Easy to powder and obtain flawless optical image





A beautiful smile depends on your teeth being healthy and looking good. Strong teeth are much more than only cosmetic – they are essential for oral health and are necessary for your overall health by helping you speak and eat properly.

MI Paste™ and MI Paste Plus™ with RECALDENT™ (CPP-ACP), is a topical tooth crème that can be used safely and effectively several times daily. It helps prevent oral disease and promotes oral health. It contains calcium and phosphate – the same minerals found naturally in your teeth. It is easy to use, tastes great and helps you maintain a healthy smile. MI Paste Plus offers the same great benefits of regular MI Paste, enhanced with fluoride to further promote remineralization and protect teeth from caries.

RECALDENT™ (CPP-ACP) is a trademark used under license.



# MI Paste™ & MI Paste Plus™

*MI Paste & MI Paste Plus are the ideal take-home products for your patient to care for and protect their new, aesthetic, all-ceramic CAD/CAM restorations. Because MI Paste & MI Paste Plus are non-abrasive topical tooth crèmes, with a neutral pH, it will not scratch porcelain or erode the surface polish or glaze, thus ensuring the long-lasting beauty of these highly aesthetic restorations.*

In addition, MI Paste & MI Paste Plus will help protect the resin cement interface, especially with all-ceramic veneers and inlays/onlays, increasing their durability and ultimately prolonging the life of your patient's CAD/CAM restorations.

Furthermore, any post-operative sensitivity your patients may experience after the placement of their new CAD/CAM restorations will quickly and easily be diminished with the twice daily use of MI Paste or MI Paste Plus following brushing and flossing.

Because the preservation of healthy tooth structure is important to both you and your patient, MI Paste & MI Paste Plus are the BEST recommendations you can make to your patient for the optimal care, maintenance and protection of the new investment they have made in their smile!

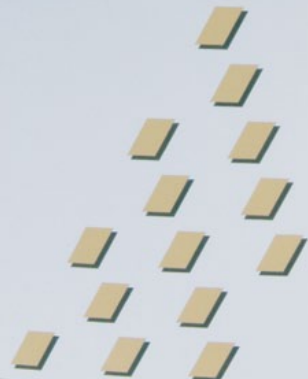
GC FUJIROCK® eP OptiXscan

- (EN) SPECIAL TYPE 4 DENTAL STONE
- (DE) SPEZIELLE KLASSE N GIPS
- (FR) PLÂTRE DENTAIRE SPÉCIAL DE TYPE 4
- (IT) GESSO DENTALE SPECIALE DI TIPO 4
- (ES) ESCAYOLA DENTAL ESPECIAL TIPO 4
- (NL) SPECIAAL TYPE 4 DENTAGIPS
- (PT) GESSO ESPECIAL TIPO 4 PARA USO EM MEDICINA DENTÁRIA
- (RU) SPECIAL TYPE 4 DENTALGIPS
- (PL) SPECIAL TYPE 4 DENTALGIPS
- (CZ) OZEL TIP 4 DS ALGSI
- (SK) SPECIALNY GIPS DENTYSTICZNY TIP 4
- (SR) ODOBRIĆI STOMATOLOŠKI NEČIŠĆIVI TIPO 4 TITRA
- (GR) ΕΙΔΙΚΗ ΟΔΟΝΤΙΑΤΡΙΚΗ ΤΥΠΟΣ ΤΥΠΟΥ 4

POWDER 5 kg  
(11.0 lbs.)

**GC**

GC EUROPE N.V.  
INTERLEUVENLAAN, 33  
LEUVEN, BELGIUM





# GC FUJIROCK<sup>®</sup> EP OptiXscan

- Compatible with existing scan devices (laser, optical)
- Extremely smooth, but non-reflective surface, for optimized scanability
- Adaptable working time and short setting time for fast processing
- Variable mixing ratio without difference in physical properties
- Low setting expansion of less than 0.08% for highest precision
- High compressive strength of approximately 53 MPa with less risk of breakage during removal and handling of the model

# PRODUCT SKU & SERVICES

## **FIT CHECKER™**

**000273** Standard Package (White)

Contains: 1 tube Base, 1 tube Catalyst, Retarder and Mixing Pad

**002059** Standard Package (Black)

Contains: 1 tube Base, 1 tube Catalyst, Retarder and Mixing Pad

## **FIT CHECKER™ II**

**002255** Two-Pack

Contains: Two 48mL cartridges with 6 mixing tips

## **G-CEM™**

**002584** Shade A2 50-Capsule Refill

**002585** Shade AO3 50-Capsule Refill

**002586** Translucent 50-Capsule Refill

**002587** Shade BO1 50-Capsule Refill

**002588** Assorted 50-Capsule Refill

**439003** Starter Kit

Contains: 1 Assorted 50-Capsule Refill  
and 1 GC Fuji CAPSULE APPLIER

## **G-CEM™ Automix**

**002898** Shade A2 Syringe Refill

**002899** Translucent Syringe Refill

**002902** Automix Tip Refill

**002903** Endo Tip Refill

## **GC Advanced Technologies®**

A GC America company offering customized milling services for your implant abutment needs. Contact your GC America representative or call 800.323.7063 for more information regarding GC Aadvia™ Implant Abutments.

## **GC CERAMIC PRIMER**

**001930** GC CERAMIC PRIMER Package

Contains: 1 Bottle Primer A (2mL), and 1 Bottle Primer B (2mL)

## **GC METAL STRIPS**

Refill Package – Contains 12 Strips, Same Mesh and Width (Choose Mesh and Width)

**000252** #200 Mesh (140 micron) Extra Coarse-RED, A-Width (2.6mm)

**000256** #300 Mesh (90 micron) Coarse-BLUE, A-Width (2.6mm)

**000260** #600 Mesh (70 micron) Medium-GREEN, A-Width (2.6mm)

**000264** #1000 Mesh (50 micron) Fine-YELLOW, A-Width (2.6mm)

**000253** #200 Mesh (140 micron) Extra Coarse-RED, B-Width (3.3mm)

**000257** #300 Mesh (90 micron) Coarse-BLUE, B-Width (3.3mm)

**000261** #600 Mesh (70 micron) Medium-GREEN, B-Width (3.3mm)

**000265** #1000 Mesh (50 micron) Fine-YELLOW, B-Width (3.3mm)

**000254** #200 Mesh (140 micron) Extra Coarse-RED, C-Width (4.0mm)

**000258** #300 Mesh (90 micron) Coarse-BLUE, C-Width (4.0mm)

**000262** #600 Mesh (70 micron) Medium-GREEN, C-Width (4.0mm)

**000266** #1000 Mesh (50 micron) Fine-YELLOW, C-Width (4.0mm)

## **EXABITE™ II**

**132412** Two-Pack

Contains: Two 48mL cartridges and 12 mixing tips

**132418** Eight-Pack

Contains: 4 two-packs of 48mL cartridges and 48 mixing tips

## **GC FUJIROCK® EP OptiXscan**

**900482** Inca Brown 5kg Package

## **GC Initial™ IO Lustre Pastes NF**

**876220** Diluting Liquid (8mL)

**876400** Refresh Liquid (8mL)

**876401** Lustre Paste Neutral (4g)

**876402** Body Shade A (4g)

**876403** Body Shade B (4g)

**876404** Body Shade C (4g)

**876405** Body Shade D (4g)

**876406** Enamel Effect Shade 1 - Vanilla (4g)

**876407** Enamel Effect Shade 2 - White (4g)

**876408** Enamel Effect Shade 3 - Light Grey (4g)

**876409** Enamel Effect Shade 4 - Dark Grey (4g)

**876410** Enamel Effect Shade 5 - Light Blue (4g)

**876411** Enamel Effect Shade 6 - Dark Blue (4g)

**876412** Enamel Effect Shade 7 - Incisio (4g)

**876413** Enamel Effect Shade 8 - Olive (4g)

**876414** Enamel Effect Shade V - Value (4g)

**877043** Glass Spatula

**877051** Brush 00

**877052** Brush 2

**877053** Mixing Dish

**877054** Plastic Cover

**877078** Set

## **MI Paste™**

**002265** Assorted 10-Tube Package

**003679** Mint 10-Tube Package

**004505** Strawberry 10-Tube Package

## **MI Paste Plus™**

**002614** Assorted 10-Tube Package

**002621** Mint 10-Tube Package

**002888** Vanilla 10-Tube Package

**002886** Strawberry 10-Tube Package