



# Restorations that cross generations



EQUIA Forte<sup>®</sup> HT  
Bulk fill glass hybrid  
restorative system



Since 1921  
100 years of Quality in Dental

# Restorations for all generations

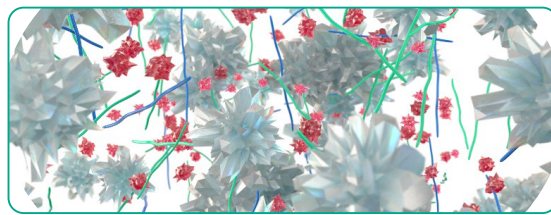
Building on the success of EQUIA Forte®, the new EQUIA Forte® HT is a long-term bulk fill restorative system with enhanced mechanical properties, superior fluoride release, sound marginal seal and excellent handling. This makes EQUIA Forte® HT a versatile and durable restorative solution, ideal for patients of all ages, including pediatric, geriatric and high-risk caries patients.

## Glass hybrid technology

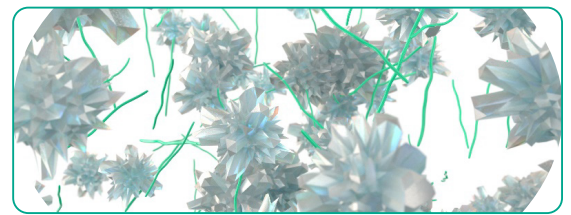
EQUIA® was first launched in 2007, and numerous clinical studies have demonstrated its clinical efficacy in Class I and II restorations\* ever since. In 2014, GC's new glass hybrid technology caused further considerable improvements, leading to the development of EQUIA Forte®. This restorative system combined a self-cure, bulk fill restorative, EQUIA Forte® Fil, laminated with a nano-filled, self-adhesive resin coat, EQUIA Forte® Coat. The new glass hybrid innovation was achieved through introduction of ultra-fine highly reactive glass and high-molecular weight polyacrylic acid powders within conventional glass which ensures advanced mechanical properties with improved flow and non-sticky handling. The nano-filled, self-adhesive resin, EQUIA Forte® Coat, ensures optimized marginal seal and wear resistance.

\*See technique guide for suggested cavity preparations.

- Surface-treated FAS (Fluoro Aluminio Silicate) glass
- Highly reactive surface-treated fine FAS glass
- High-molecular-weight polyacrylic acid
- Polyacrylic acid



EQUIA Forte® Fil and EQUIA Forte® HT Fil  
advanced glass hybrid technology



EQUIA® Fil

## Taking glass hybrid to the next level

The strength and handling are further improved in EQUIA Forte® HT by developing an intelligent control of distribution and interaction of these glass particles. Also, EQUIA Forte® Coat is now available in an ergonomic flip-top bottle that minimizes waste.

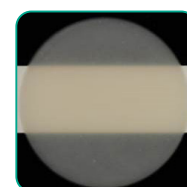
The result? A strong restorative with prolonged working time and superb handling that is excellent for bulk-fill placement, even in load-bearing Class II restorations.\*

\*See compressive and flexural strength data comparison charts

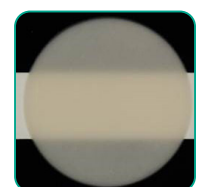


## Improved translucency

Pushing the boundaries of glass hybrid technology even further, EQUIA Forte® HT has a perfectly adapted translucency for better looking posterior restorations. The **refractive index** of the fillers has been adapted to the matrix. As a result, the final restorations look more natural and aesthetic<sup>7</sup>.



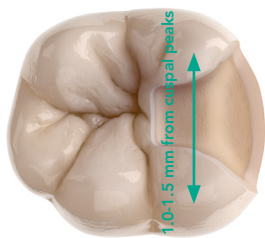
EQUIA Forte®  
HT Fil  
Shade A2



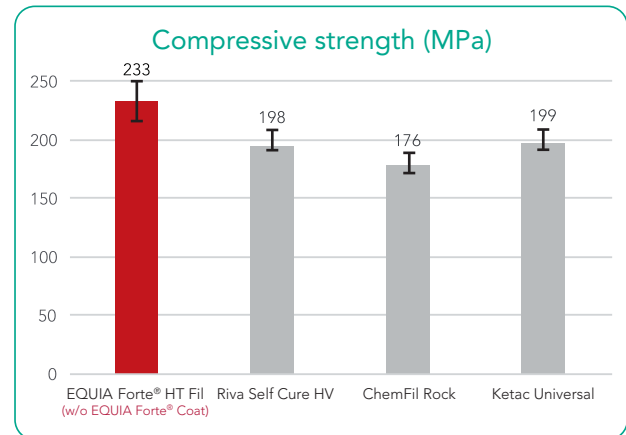
EQUIA Forte® Fil  
Shade A2

## Strong & durable

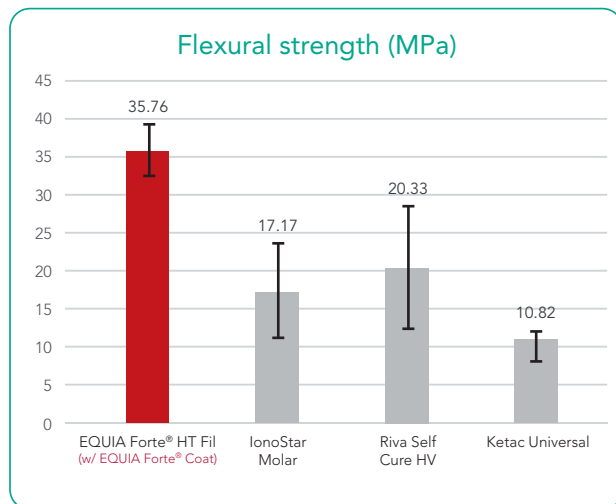
Glass hybrid systems offer the strength of the latest innovative glasses combined with the wear resistance of a filled coating. The **unique synergy between the coating and the restorative material** improves the durability and wear resistance of the restorations<sup>4</sup>.



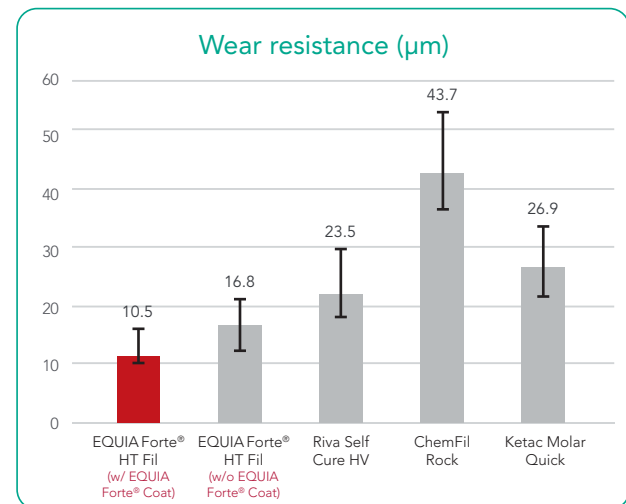
EQUIA Forte® HT is indicated for stress-bearing Class II cavities\*.



ISO9917-1: 2007.  
Source: GC R&D, Japan, 2018. Data on file.



Three-point bending test (ISO10477:2004).  
Source: University of Siena, Italy. Publication in preparation.



Source: GC R&D, Japan, 2018. Data on file.

## Excellent biocompatibility & biomimetic properties

EQUIA Forte® HT exhibits a strong chemical bond to tooth providing exceptional marginal seal. The isolation is not needed as the bond strength is not compromised even in presence of saliva. Since no etchant is used, there is virtually no post-operative sensitivity. Due to its hydrophilic nature and coefficient of thermal expansion similar to dentine, it is an excellent biomimetic material i.e. creating a 3D structure which mimics the structure of the dental tissue. It is not only a tooth-friendly option but also an environment-friendly solution, making it a great choice for multiple clinical situations including as an amalgam alternative.



True bulk-fill



Moisture-tolerant



Extensive indications



Proven longevity

## Fast & easy placement

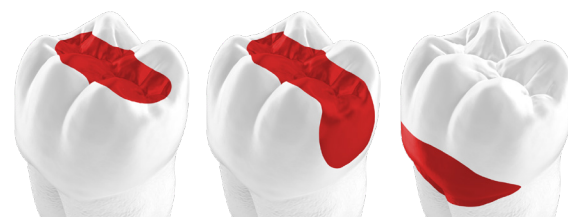
EQUIA Forte® HT can be used in the partial caries excavation technique to create **minimally invasive preparations (MI)**. As no etching is used and the system relies on chemical adhesion, there is less risk of post-operative sensitivity – which also makes it a **safe treatment solution**.



## EQUIA Forte® HT, your best partner for posterior restorations



Courtesy of Dr. Z Bilge Kütük, Turkey



Main indications for EQUIA Forte® HT

## Long-term proven clinical performance

EQUIA Forte® HT is a reliable system based on **12 years of clinical experience with EQUIA®**.

The longevity of posterior EQUIA® restorations has been proven in many independent, long-term clinical studies<sup>1-5</sup> showing after 6 years a success rate of 100% for Class I restorations<sup>2-3</sup> and between 92.3% and 98.7% for Class II<sup>1-3,9</sup>.

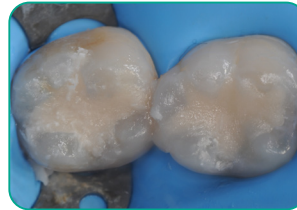
- Gurgan et al. A randomized controlled 10 years follow up of a glass ionomer restorative material in class I and class II cavities, J Dent. 2020 March, 94:103175, doi: 10.1016/j.jdent.2019.07.013.  
**EQUIA® vs. composite**
- Gurgan et al. Clinical Performance of a glass ionomer restorative system: a 6-year evaluation. Clin Oral Investig. 2017;21(7):2335-2343.  
**EQUIA® vs. composite**
- Türkün et al. A Prospective Six-Year Clinical Study Evaluating Reinforced Glass Ionomer Cements with Resin Coating on Posterior Teeth: Quo Vadis? Oper Dent. 2016;41(6):587-598  
**EQUIA® vs. Riva™ Self Cure†**
- Basso et al. 7 Years, Multicentre, Clinical Evaluation on 154 Permanent Restorations Made With a Glassionomer-based Restorative System. J Dent Res. 2016;95 Spec Issue B: #0446.
- Klinke T. et al. Clinical Performance during 48 months of two current glass ionomer restorative systems with coatings: a randomized clinical trial in the field. Trials. 2016;17(1):239. doi: 10.1186/s13063-016-1339-8.  
**EQUIA® vs. glass ionomer with conventional coating**
- Gurgan et al. 12-month Clinical-performance of a Glass-hybrid-restorative in Non-caries-cervical-lesions of Patients With Bruxism. J Dent Res. 2018; 97 Spec Issue A: #0235.  
**EQUIA Forte® vs. composite**
- Shimada et al. Evaluation of Mechanical Properties of New GI-restorative (EQUIA Forte® HT). J Dent Res. 2019; 98 Spec Issue A: #3662.  
**EQUIA Forte® HT**
- Y. Hokii et al. Fluoride Ion Release/Recharge Behavior of Ion-Releasing Restorative Materials, Dental Materials, Volume 35, Supplement 1, 2019 (Accepted for publication).
- Literature review, presented at IADR 2019 by Prof. Soraya Coelho Leal.
- Miletic et al. Clinical Performance of a Glass Hybrid System Compared with a Resin Composite in the Posterior region: results of a 2 year Multicenter Study. J Adhes Dent. 2020;22(3):235-247. doi: 10.3290/jjad.a44547.  
**EQUIA Forte® vs. composite**
- Schwendicke F et al. Glass hybrid versus composite for non-carious cervical lesions: Survival, restoration quality and costs in randomized controlled trial after 3 years. J Dent 2021;110:103689. doi.org/10.1016/j.jdent.2021.103689.  
**EQUIA Forte® vs. composite**

# Clinical cases

## A strong & biomimetic amalgam alternative

The material can be placed in bulk and is easy to pack & contour. It takes only 3'25" to complete your restorations!\*

\*Assuming average procedure times following the instructions for use.



Courtesy of Dr. Victor Cedillo Felix, San Diego, CA.

## Restoration of a posterior tooth in a high risk caries patient

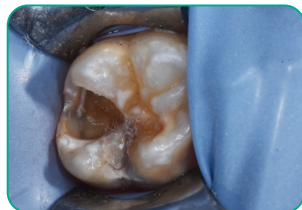
The moisture tolerant adhesion of EQUIA Forte® HT enables easy restoration of deep cavities, even when a rubber dam cannot be placed. The use of sectional matrix will contribute to the longevity of the restorations.



Courtesy of Dr. Z Bilge Kütük, Turkey

## Restoration of sensitive, hypomineralized MIH teeth

The chemical adhesion of the material - even to untreated dentine - offers a more sustainable solution in situations where bonding is compromised. The material can be easily placed after partial manual caries removal, making it easier to use in hypersensitive patients or patients having molar incisor hypoplasia (MIH).



Courtesy of Dr. P. Rouas, France



**EQUIA Forte® HT Fil**

Contains: 50 EQUIA Forte® HT Capsules  
(Powder 0.4g, Liquid: 0.13g (0.10mL) per capsule).  
Shades: A2, A3

**EQUIA Forte® Coat Bottle**

Contains: One EQUIA Forte® Coat  
(4mL) bottle.



**GC DENTIN CONDITIONER**

Contains: One 6g (5.7mL) bottle.



**GC CAPSULE APPLIER IV**

Contains: One capsule applier.



GC India Dental Pvt. Ltd.  
#233, Phase 3, IDA Pashamylaram,  
Sangareddy District - 502307 Telangana, India  
E: info.gcindia@gc.dental | W: www.gcindiadental.com