



EQUIA Forte EQUIA Forte EQUIA Forte EQUIA Forte EQUIA F
Forte EQUIA Forte EQUIA Forte EQUIA Forte EQUIA
EQUIA Forte EQUIA Forte EQUIA Forte EQU
Forte EQUIA Forte EQUIA Forte
EQUIA Forte EQUIA Forte
Forte EQUIA Forte
EQUIA Forte
Forte EQUIA
EQUIA
Forte
EQUIA
Forte
EQUIA
Forte
EQUIA

INDIA

Dentistry Times

EDITION: INDIA

THURSDAY, SEPTEMBER 15, 2016

No. 123 VOL. CIX.

Glass Hybrid Technology Finally Hits Dentistry

DENTISTRY NEWS SERVICE, Hyderabad

EQUIA Forte Fil and EQUIA Forte Coat, working in synergy. United they build a stronger, superior posterior bulk fill material. This unique restorative system for all age groups will impress you on all levels. The impressive aesthetics widen your posterior restorative options to fulfill your patients' expectations. Based on the EQUIA Forte system, clinically proven over several years, EQUIA Forte offers a great daily

technology. EQUIA Forte Coat completes the restoration. EQUIA Forte Coat is brush applied and light cured to form a highly wear resistant, self-adhesive laminate, sealed surface with smooth, providing a remarkable strength and impressive wear resistance. EQUIA Forte Fil and EQUIA Forte Coat, working in synergy. United they build a stronger, superior posterior bulk fill material. This unique restorative system for all age groups will impress you on all levels. The impressive aesthetics widen your restorative

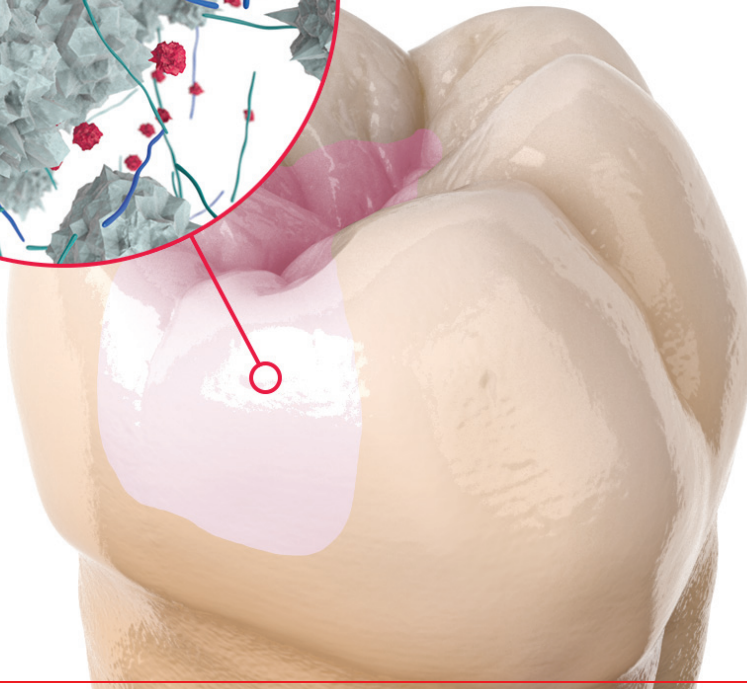
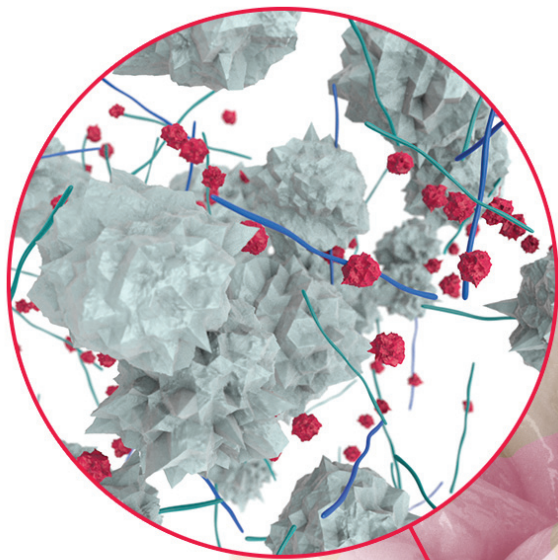


routine. With EQUIA Forte Coat acting like a thin flowing lute coating, the consistency and aesthetics are enhanced. Featuring new technology, EQUIA Forte Coat completes the restoration. EQUIA Forte Coat is brush applied and light cured to form a highly wear resistant, self-adhesive laminate, sealed surface with smooth, providing a remarkable strength

The Glass Hybrid Technology

EQUIA Forte™

EQUIA Forte Fil is a fast setting, aesthetic restorative with an increase in physical properties, achieved through the introduction of novel Glass Hybrid technology. A new, ultrafine, and highly reactive glass is dispersed within the glass hybrid fillers to accelerate and enhance matrix formation after mixing. This innovative glass hybrid technology increases the ion availability and builds a much stronger matrix structure with greater physical properties, wear resistance and fluoride release.



EQUIA Forte™

EQUIA Forte™ is a glass hybrid bulkfill, rapid restorative system, that is easy to use and very quick to place. EQUIA Forte™ builds on the remarkable clinical trials performance of the original EQUIA system and presents as a viable alternative to amalgam for the restoration of posterior teeth.



The EQUIA Forte™ system consists of EQUIA Forte™ Fil and EQUIA Forte™ Coat

EQUIA Forte™ Fil is a high strength glass hybrid restorative. It has similar handling, setting and aesthetics as Fuji IX GP EXTRA, but with enhanced physical properties for superior wear resistance, fracture toughness and durability.

EQUIA Forte™ Coat is a clear, highly wear resistant, self-adhesive light-cured resin coating which laminates EQUIA Forte™ Fil to toughen, polish and protect.

STRONGER



TOUGHER

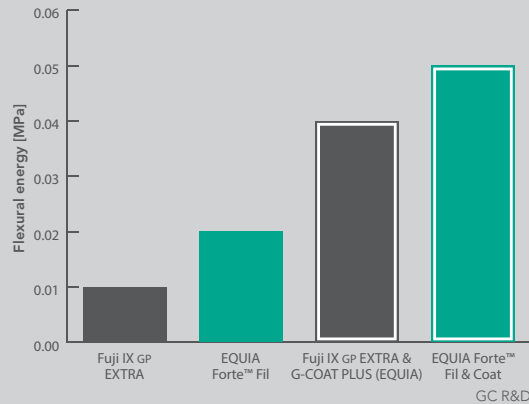


EQUIA Forte™. The new generation of high str

THINK STRONG

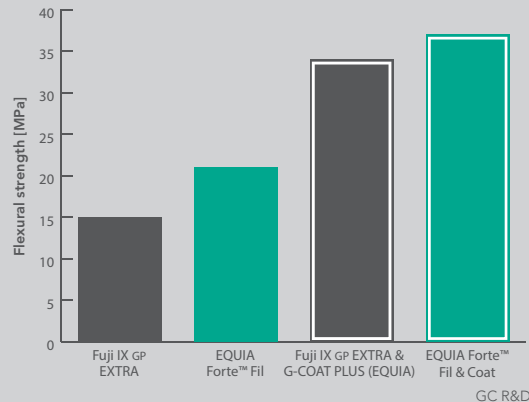
EQUIA Forte™ Fil is a fast setting, aesthetic glass hybrid restorative which features a significant increase in fracture toughness (flexural energy) and flexural strength.

Higher fracture toughness



EQUIA Forte™ Fil features a significant increase in flexural energy (fracture toughness), through the introduction of novel HYBRID glass technology.

Higher flexural strength



This patented HYBRID glass technology increases the availability of metal ions to build a much stronger matrix structure with greater flexural strength.



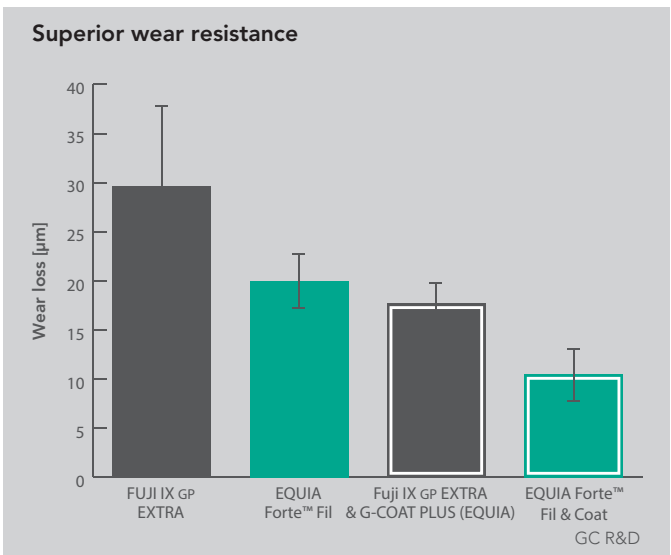
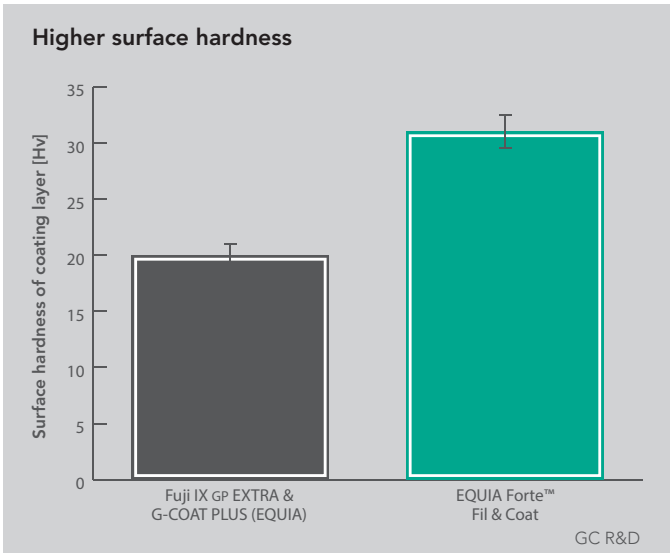
length glass hybrid restorative



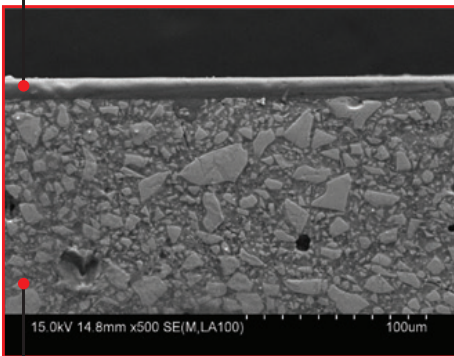
THINK TOUGH

EQUIA Forte™ Coat completes the EQUIA Forte™ restoration providing a smooth laminated surface with remarkable strength and impressive wear resistance. EQUIA Forte™ Coat is more flowable than G-COAT PLUS, resulting in a smoother surface.

EQUIA Forte™ Coat is designed for optimum wetting, strong adhesion, and has excellent colour stability and stain resistance.



EQUIA Forte™ Coat

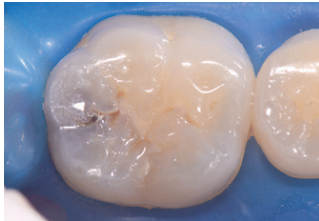


EQUIA Forte™ Fil

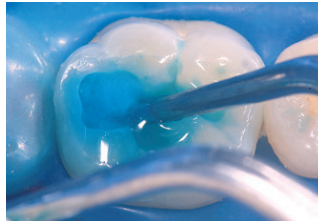
THINK SYNERGY AND SPEED

The synergy of GC's latest glass hybrid technology, working with minimal intervention cavity techniques, takes the proven EQUIA system to the next level of performance. EQUIA Forte™ builds stronger glass hybrid restorations for posterior and cervical cavities, using a simple procedure that can take less than 5 minutes to complete.

CASE STUDY



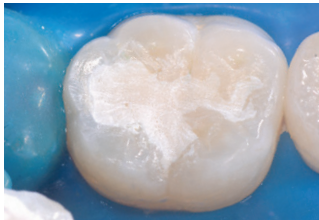
Female patient, age 36. Tooth 46 rapid caries approaching distal.



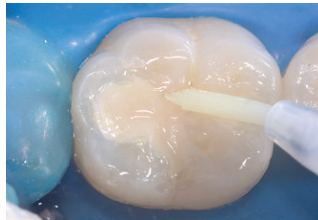
CAVITY CONDITIONER applied for 10sec to remove surface debris.



EQUIA Forte™ Fil has up to 60sec working time and is placed in one increment.



Preliminary shaping was performed; occlusal contact, good aesthetics and shape were verified.



EQUIA Forte™ Coat was applied and light-cured 20sec to complete the EQUIA restoration.



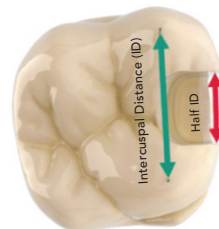
1 week after placement.

Dr. E. Stephen Youllois

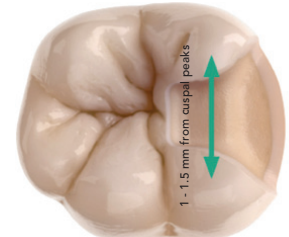
Indications

1. Class I restorations
2. Stress bearing Class II restorations
3. Non-stress bearing Class II restorations
4. Intermediate restorative
5. Class V and root surface restorations
6. Core build-up

Recommended Class II Cavity design



Recommended Class II Cavity design as per GL IX Extra



Recommended Class II Cavity design as per Equia Forte IFU



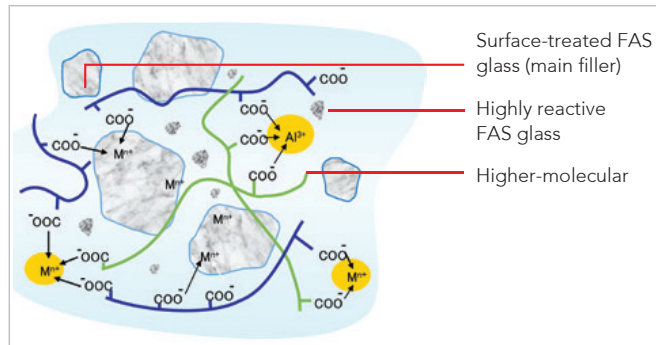
Q&A

1. Why is EQUIA Forte™ Fil stronger than Fuji IX GP EXTRA?

EQUIA Forte™ Fil is stronger because the matrix surrounding the glass fillers is stronger. This is achieved through the introduction of novel HYBRID glass technology.

Aside from the conventional glass particles, an innovative ultrafine, highly reactive glass is dispersed into EQUIA Forte™ Fil.

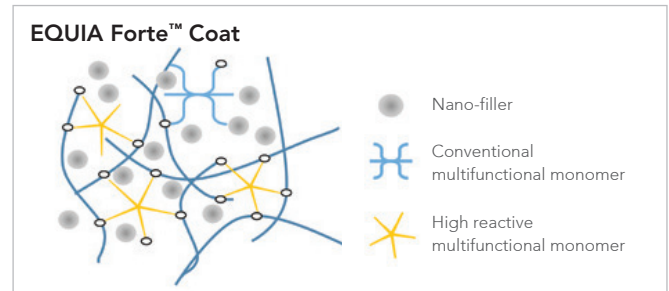
Combined with a higher molecular weight polyacrylic acid, this new HYBRID glass formulation increases ion availability, enhancing matrix formation and builds a much stronger matrix structure.



2. Why is EQUIA Forte™ Coat tougher than G-COAT PLUS?

EQUIA Forte™ Coat features new cross-linking monomer chemistry, with more efficient polymerisation characteristics to produce a tougher resin matrix, that is further reinforced by single dispersion nano-fillers.

This new monomer also improves handling and creates a smoother surface finish.



3. How aesthetic is EQUIA Forte™?

EQUIA Forte™ Fil has a great shade-matching ability and EQUIA Forte™ Coat forms a high lustre, translucent coating, saving you polishing time. The synergy of these two materials in EQUIA Forte™, means you will achieve excellent aesthetics in minimal time.





EQUIA Forte™ Fil

Box: 50 capsules



EQUIA Forte™ Coat

Bottle 4mL



'GC'
95th
ANNIVERSARY

GC Associates:

AMRITSAR: Sumesh 9888659751; **LUDHINA:** Sunil Kumar 9041004273; **CHANDIGARH:** Rajiv Ranjan 8146523096; **DELHI:** Shobhit Kumar 9250099939; Amit Bhardwaj 9250099942; Navjeet Singh 9250099941; Manoj Kumar Singh 9810675102; Deepak Muduli 9811694605; Ajay Rao 9212341623; **JAIPUR:** Ramdayal Gujar 8829000165; **JALANDHAR:** Vikas Chander 9041004562; **LUCKNOW:** Rahul Jaiswal 7275000432; Vineet Mishra 8400845555; **MEERUT:** Ashish Das 9045516823; **UDAIPUR:** Kislaya Singh Rathore 9828498114; **BHOPAL:** Farukh Tai 7415005752; **INDORE:** Vikas Kumrawat 9893023403; Pankaj Yadav 7415005751; **KOLKATA:** Sayantan Banerjee 9836580850; Mousum Borah 9038000267; Arnabroy 09830840412; Swati Debnath 0980022227; **AHMEDABAD:** Sukethu Thaker 9033003081; **JAMNAGAR:** Mehul Nathwani 9824701831; **MUMBAI:** Vishal Baxi 9324383374; Jayesh Sawant 7208011795; Naresh Kamath 9892208193; Natalie Sharma 9833162889; Kiran Shroff 9821733269; **NAGPUR:** Mujahid Khan 9373722061; **PUNE:** Ganesh R Shirsath 08446002900; Siddarth Basave 9860404677; **RAJKOT:** Gaurang Kakkad 9824181234; **BANGALORE:** C. Ragavendran 8792002278; Seshadri. N 8792002279; Narasimha Murthy. V.S. 8792002281; Harish K V Gowda 09535614983; **BHUBANESWAR:** M Srinu 8977012382; **HUBLI:** Sharanappa.K 9742512104; **KURNOOL:** Srinivasulu.V 9177626851; **MANGALORE:** Pradeep Salian 8792002283; **MYSORE:** Pallavi.R 9986642333; **CHENNAI:** Shivakumar.R 9444952606; Venkateshwara Raj.S 7418010312; L. Arul Sigamani 9751753253; **TRICHY:** Joshua S Gnanadurai 9894257470; **MADURAI:** A. Solomon Jebakumar 9600340054; **TIRUNELVELI:** Raaja Sivan.P 7418010315; **SALEM:** Vadiel.G 7418010313; **CALICUT:** Bejoy Raj K 7736000118; **ERNAKULAM:** Nittu Antony 7736000119; **COCHIN:** Binny George.K.S 7736000115; Prasoon.V.S. 7736000117; **THIRUVANATHAPURAM:** Sateesh Kumar SS 7736000116; **HYDERABAD:** Sateesh Kumar. B 8008772489; Srinivas Patnaik 8179607044; Anil.M 8121278376;

GC Partners:

ANDHRA PRADESH: Vizag - Crown Dental Depot 9848146870; Vijayawada - Yashvi Dental 08654 226655, 9949350314; **ASSAM:** Guwahati - North East Dental Depot 9435343801; **CHANDIGARH:** Star Dent 09878402497, 9463836616, 0172-2707449; **CHATTISHGARH:** Raipur - Vandana Enterprises 9826117130; **GOA:** Comba Margao - Dental Hub 9821862999; **GUJARAT:** Rajkot - Angel Surgi Pharma 9428274859, 0281-2223242; Babsi Dent 9825277238; Vadodara - Nagraj Enterprise 0265-2414052, 2416328; Surat - Cherag Dental Supply 9824114964; Ahmedabad - Varun Traders 9825065202, 9328265202, 079 26440333, 26562812 **KARNATAKA:** Bangalore - United Dental Supply 080-26613385; Zahn Solutions 9880108208; Group Pharmaceuticals Ltd 9035837285; Pharma lines 080 41203980; Meghana & Co. 080-23406304, 080-23358644, 9844034069; Mysore - Shree Ganesh Dental Depot 0821-2498995, 919845167214; Gulbarga - Gulbarga Dental Depot 08472-251146, 9845438938; Udupi - Radha Medicals 9243310610; **KERALA:** Cochin - Cochin Drug Centre 9037064118, 0484-6004118; Kottayam - Dentsales 0481-2560176, 9349508170; Calicut - Jaypee General Agencies 0495 2380307; KCK Dentals 0495-2367655, 9895978714; Trivandrum - KCK Dentals 0471 - 4068004; Trichur - Trichur Surgicals 9447120813; **MADHYA PRADESH:** Bhopal - Kartik Surgident 9425183812; Narmada Dental 9826053937; Distinct Dental & Surgical 9893135170; Indore - Radiant Surgident 9300126730; The National Dental Depot 9893241170, 0731-2701170; Gwalior - Natraj Surgident 0751-2324663; **JHARKHAND:** Ranchi - Shivani Marketing 8863054171; **MAHARASHTRA:** Aurangabad - Aurang Dental & Surgicals 9423149548, 9890046246, 0240-2336824, 2348857; Mumbai - Daiki Dental 022-28897450; Doshi Marketing Corporation 022-25245258, 9833882693; Medensco 9821071855, 9987778844, 022-22625460; Pankaj Dental Trader 022-24709718, 9820032895; R.G. Distributor 9167974707; Raya Impex 28874101/02/03/04; Thane Dental Shoppe 8879835101; Pune - Geeta Trading Company 9422012294; Retail Denmart 98903031170, 020-4221170; Kolhapur - Deals and Designs 9011069899; Nagpur - Dr. Bagadiya & Co. 9822201360; **NEW DELHI:** Essential Dental Products 9810120089, 41551160, 65656910; Innodent India 011-23698602, 9810117281, 9810175084, 9810588800; K. S. Mathur & Company 9810145388; **PUNJAB:** Ludhiana - Gift Dental Co. 9888028199; Jalandhar - International Dental System 0181-6537890, 9417264691; Amritsar - Lalji Dental 0183-2559830, 9915898000; Patiala - Sunnydeep Enterprises 0175-2303508; **RAJASTHAN:** Jaipur - Utkars Pharma Pvt. Ltd 9829011108, 0141-2203234; Jodhpur - Surgident Jodhpur 9414294638; **TAMILNADU:** Chennai - APT Dental Distributors 044-24984962 & amp 9840046092; Balaji Surgicals 044-26411182 & amp 9841298198; Dentcare - 044-24711103; Vijay Dental Depot 044-24755512 & amp 9710287103; Salem - APT Dental Distributors 04272332716 & amp 9843044140; Coimbatore - APT Dental Distributors 0422-2246214; **PUDUCHERRY:** East Coast Surgicals 0413-2225907 & amp 09894711588; Newdent 9047394488; **TELANGANA:** Hyderabad - Deccan Dental Depot Pvt. Ltd. 24754923 9391021766; Everest Agencies 9391159181, 040-24751932; Shanti Dental & Medical Co. 919885577427, 040-23212427, 9246377427; The Hindustan Dental Medical & Surgical Corporation 23203097; Uma's Dental Shoppe 919848043634; Universal Dental Suppliers 9391059069; **UTTAR PRADESH:** Lucknow - Assam Dental Supply Co. 0522-2256095, 09415022177; Saharanpur - Krishna Dental 9412232904, 08191837076; Selmark Limited 0522 3027001, 9335666111; **UTTARKHAND:** Krishna Enterprises 9412232904; **WEST BENGAL:** Kolkata - Chowdhury Brothers 033 22651962 & amp 9830113633; Siliguri- Swastik Health Care 943479792; **MIZORAM:** Aizawl - Zoram Dental Chamber 0389-2324506 & amp 9436141474; **TRIPURA:** Agartala - Tripura Dental Supply 9436124869; **ODISHA:** Sudarshan Agency 7205952767



GC India Dental Pvt. Ltd.

Plot No. 233, Phase III, IDA Pashamylaram,
Pattancheru Mandal, Medak District - TS 502 307
Tel. : +91 8455 224 844 Toll Free : 1800-425-3132
Email : info@gcindiadental.com
Website : www.gcindiadental.com

Connect us on:

-  <https://www.facebook.com/GcIndiaDental>
-  https://twitter.com/GCIndia_Dental
-  in.linkedin.com/pub/gc-india-dental/a2/435/63/
-  <http://www.pinterest.com/gcindiadental/>
-  <http://plus.google.com/+gcindiadental>

GC INDIA App



for Android



for iPhone